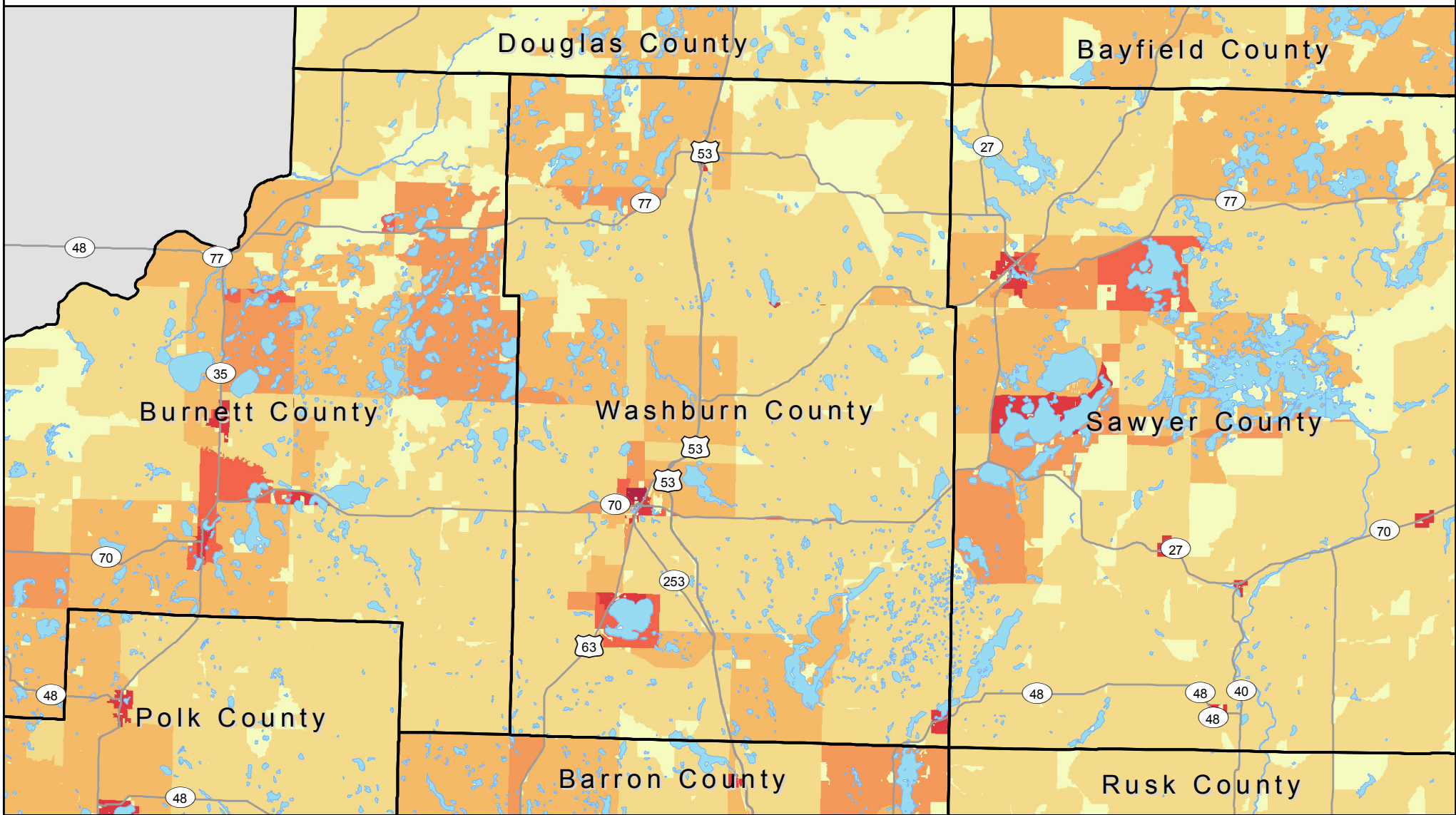
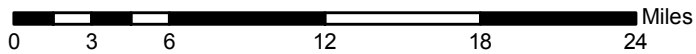
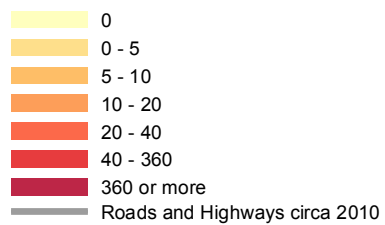


Estimated 1940 Housing Density Washburn County



Housing Units Per Square Mile



Sources:

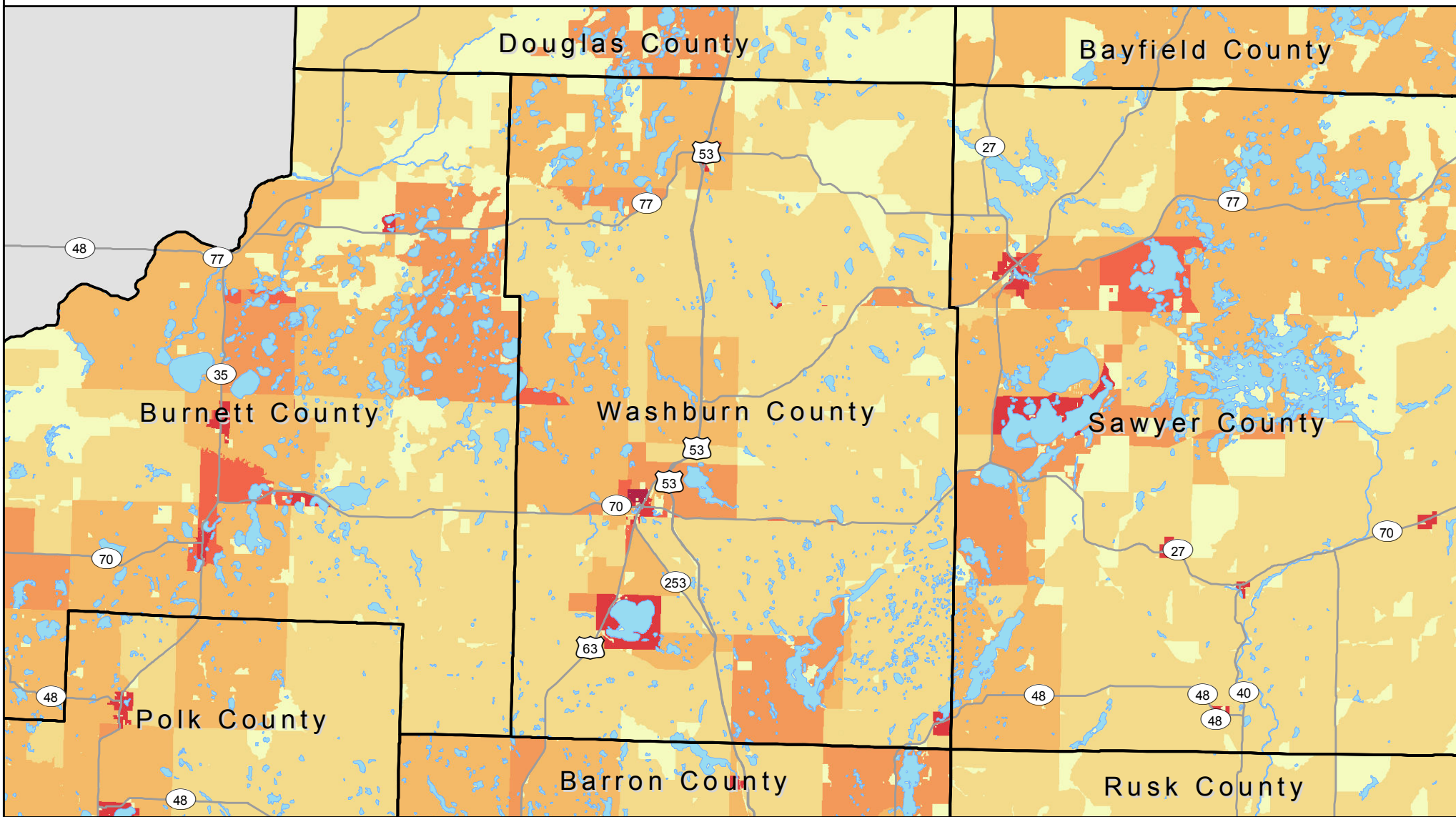
Roads: ArcGIS Streetmap USA, 2010
 1940 - 1980 Housing Density: US Census Partial Block Group Data
 Hammer, R. B. S. I. Stewart, R. Winkler, V. C. Radeloff,
 and P. R. Voss. 2004. Characterizing spatial and temporal
 residential density patterns across the U.S. Midwest, 1940-1990.
 Landscape and Urban Planning 69: 183-199.
<http://silvis.forest.wisc.edu/old/Library/HousingData.php>

Produced at APL by Greg Grube

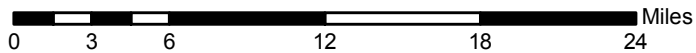
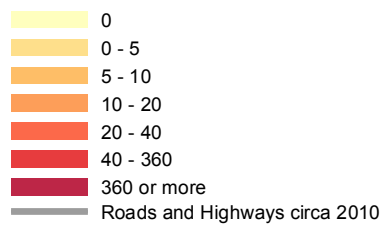


Applied Population Laboratory
 UW Madison
<http://www.apl.wisc.edu/>

Estimated 1950 Housing Density Washburn County



Housing Units Per Square Mile



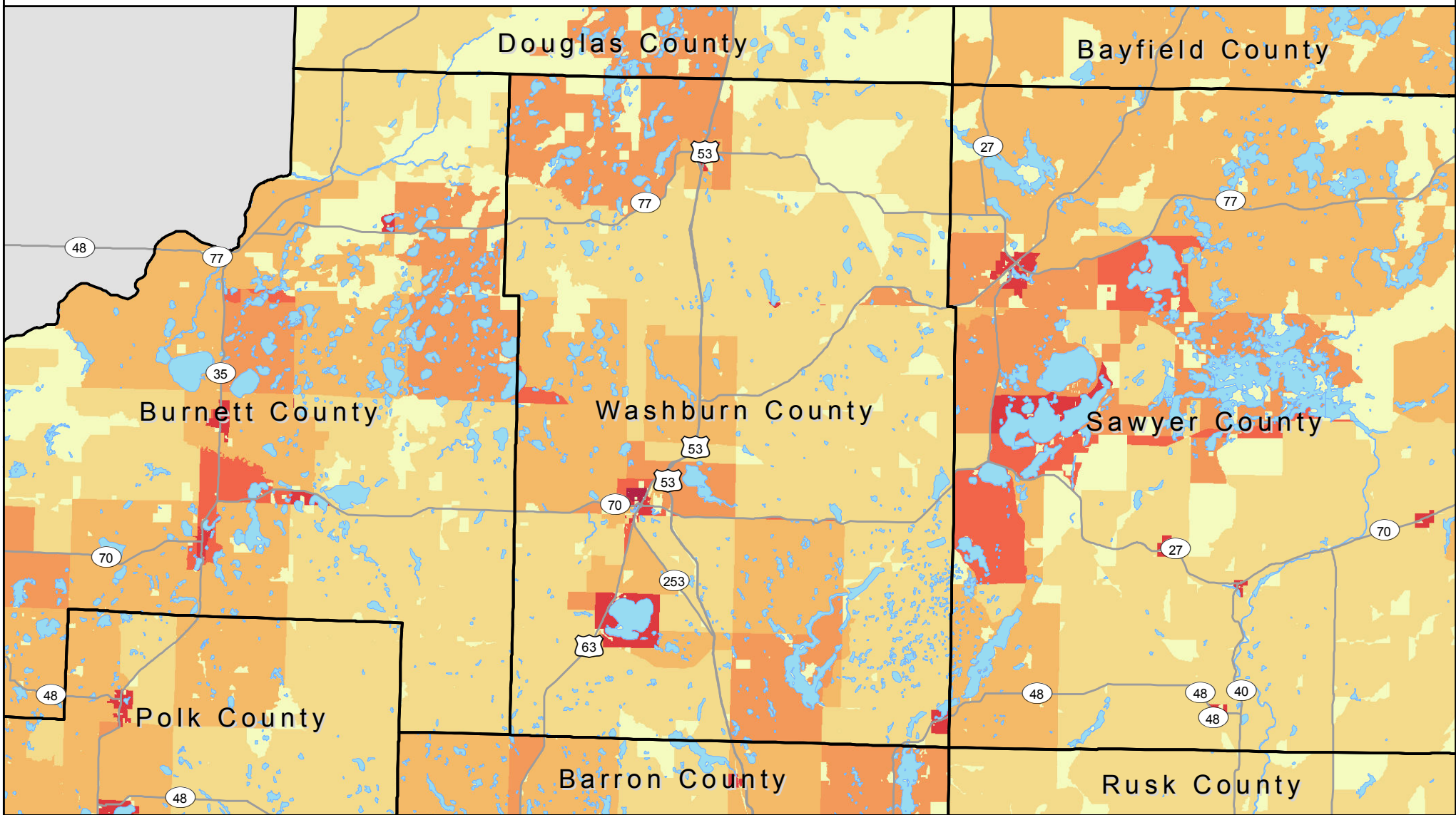
Sources:
 Roads: ArcGIS Streetmap USA, 2010
 1940 - 1980 Housing Density: US Census Partial Block Group Data
 Hammer, R. B. S. I. Stewart, R. Winkler, V. C. Radeloff,
 and P. R. Voss. 2004. Characterizing spatial and temporal
 residential density patterns across the U.S. Midwest, 1940-1990.
 Landscape and Urban Planning 69: 183-199.
<http://silvis.forest.wisc.edu/old/Library/HousingData.php>

Produced at APL by Greg Grube

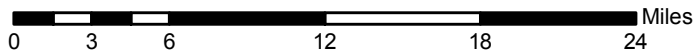
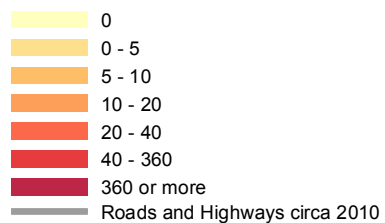


Applied Population Laboratory
 UW Madison
<http://www.apl.wisc.edu/>

Estimated 1960 Housing Density Washburn County



Housing Units Per Square Mile



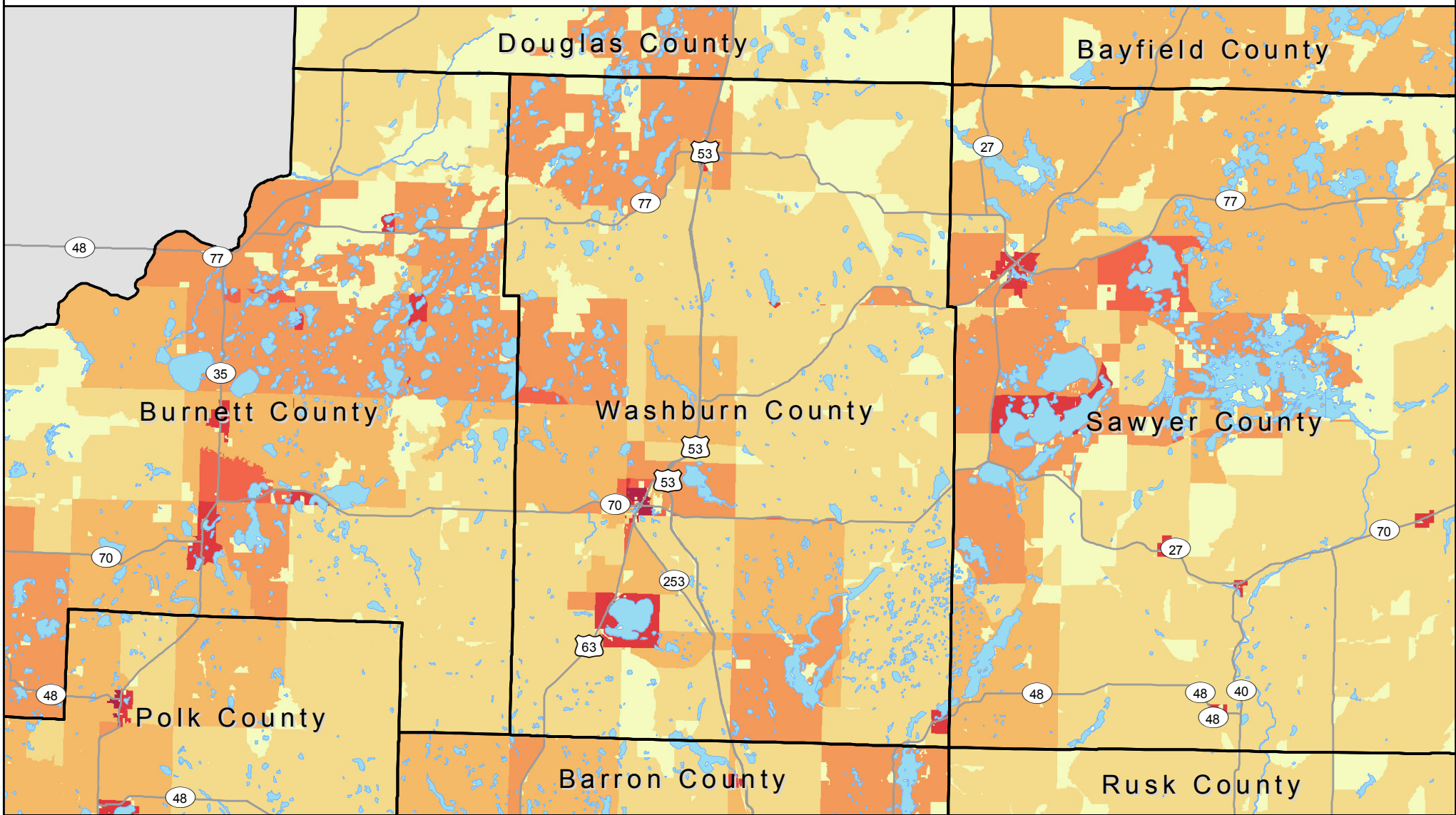
Sources:
 Roads: ArcGIS Streetmap USA, 2010
 1940 - 1980 Housing Density: US Census Partial Block Group Data
 Hammer, R. B. S. I. Stewart, R. Winkler, V. C. Radeloff,
 and P. R. Voss. 2004. Characterizing spatial and temporal
 residential density patterns across the U.S. Midwest, 1940-1990.
 Landscape and Urban Planning 69: 183-199.
<http://silvis.forest.wisc.edu/old/Library/HousingData.php>

Produced at APL by Greg Grube

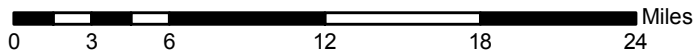
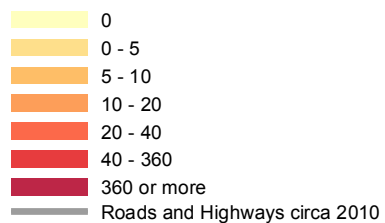


Applied Population Laboratory
 UW Madison
<http://www.apl.wisc.edu/>

Estimated 1970 Housing Density Washburn County



Housing Units Per Square Mile



Sources:

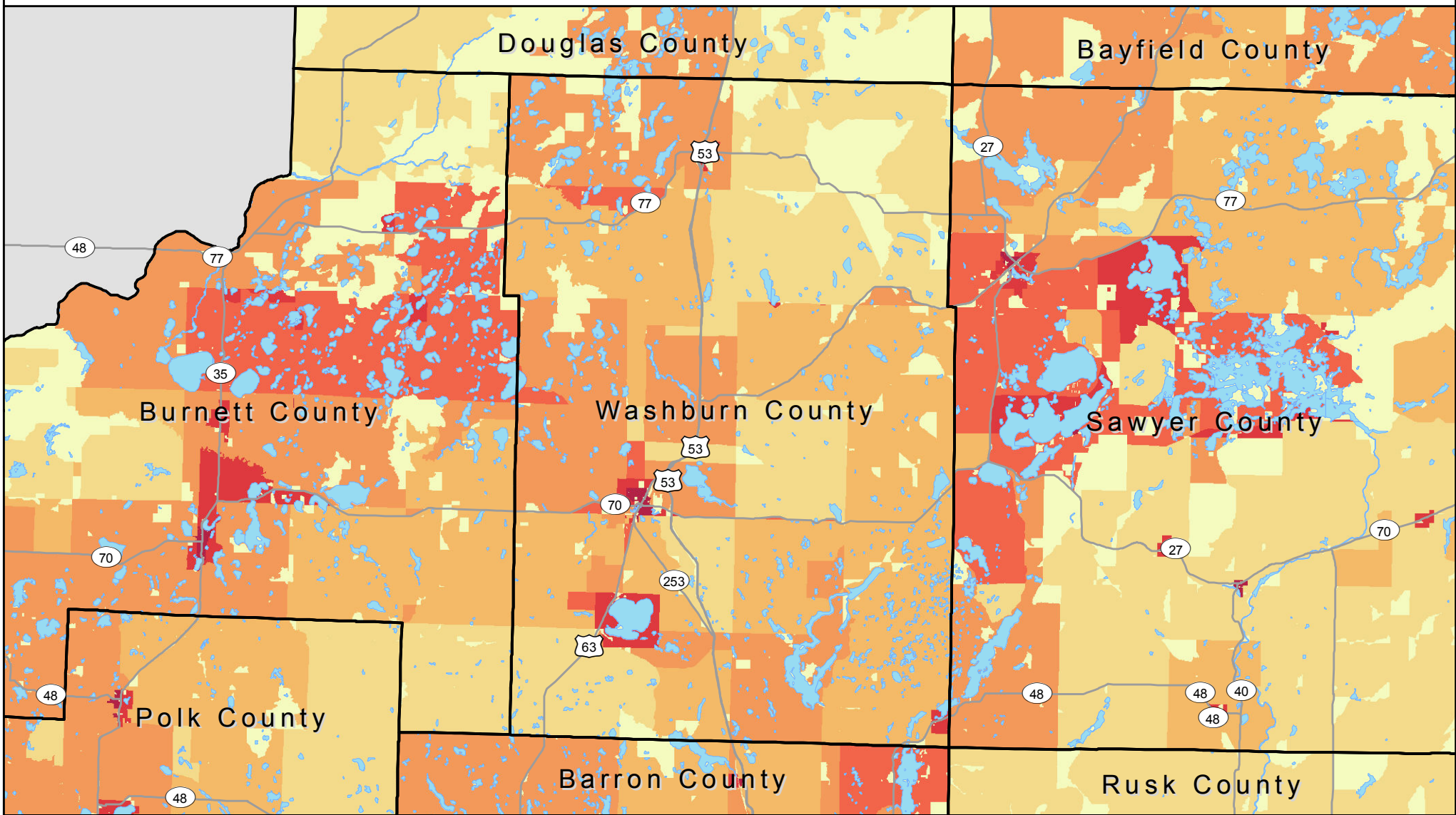
Roads: ArcGIS Streetmap USA, 2010
 1940 - 1980 Housing Density: US Census Partial Block Group Data
 Hammer, R. B. S. I. Stewart, R. Winkler, V. C. Radeloff,
 and P. R. Voss. 2004. Characterizing spatial and temporal
 residential density patterns across the U.S. Midwest, 1940-1990.
 Landscape and Urban Planning 69: 183-199.
<http://silvis.forest.wisc.edu/old/Library/HousingData.php>

Produced at APL by Greg Grube

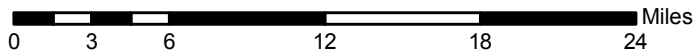
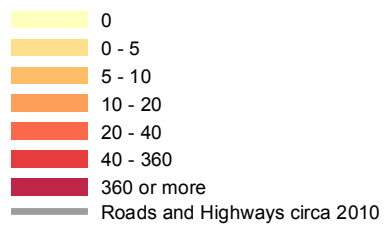


Applied Population Laboratory
 UW Madison
<http://www.apl.wisc.edu/>

Estimated 1980 Housing Density Washburn County



Housing Units Per Square Mile



Sources:

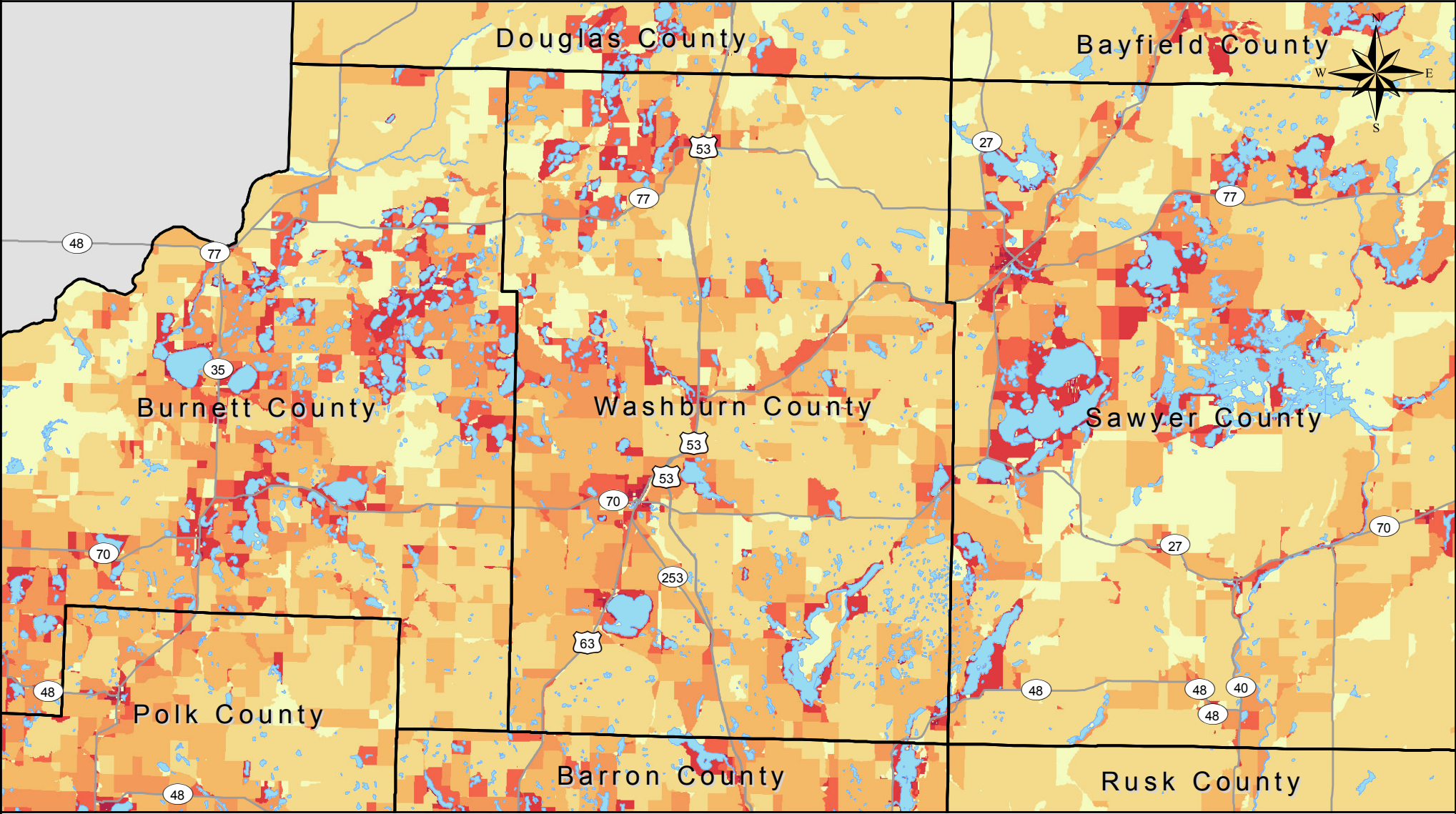
Roads: ArcGIS Streetmap USA, 2010
 1940 - 1980 Housing Density: US Census Partial Block Group Data
 Hammer, R. B. S. I. Stewart, R. Winkler, V. C. Radeloff,
 and P. R. Voss. 2004. Characterizing spatial and temporal
 residential density patterns across the U.S. Midwest, 1940-1990.
 Landscape and Urban Planning 69: 183-199.
<http://silvis.forest.wisc.edu/old/Library/HousingData.php>

Produced at APL by Greg Grube



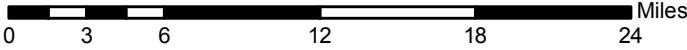
Applied Population Laboratory
 UW Madison
<http://www.apl.wisc.edu/>

Census 1990 Housing Density Washburn County



Housing Units Per Square Mile

- 0
- 0 - 5
- 5 - 10
- 10 - 20
- 20 - 40
- 40 - 360
- 360 or more
- Roads and Highways circa 2010



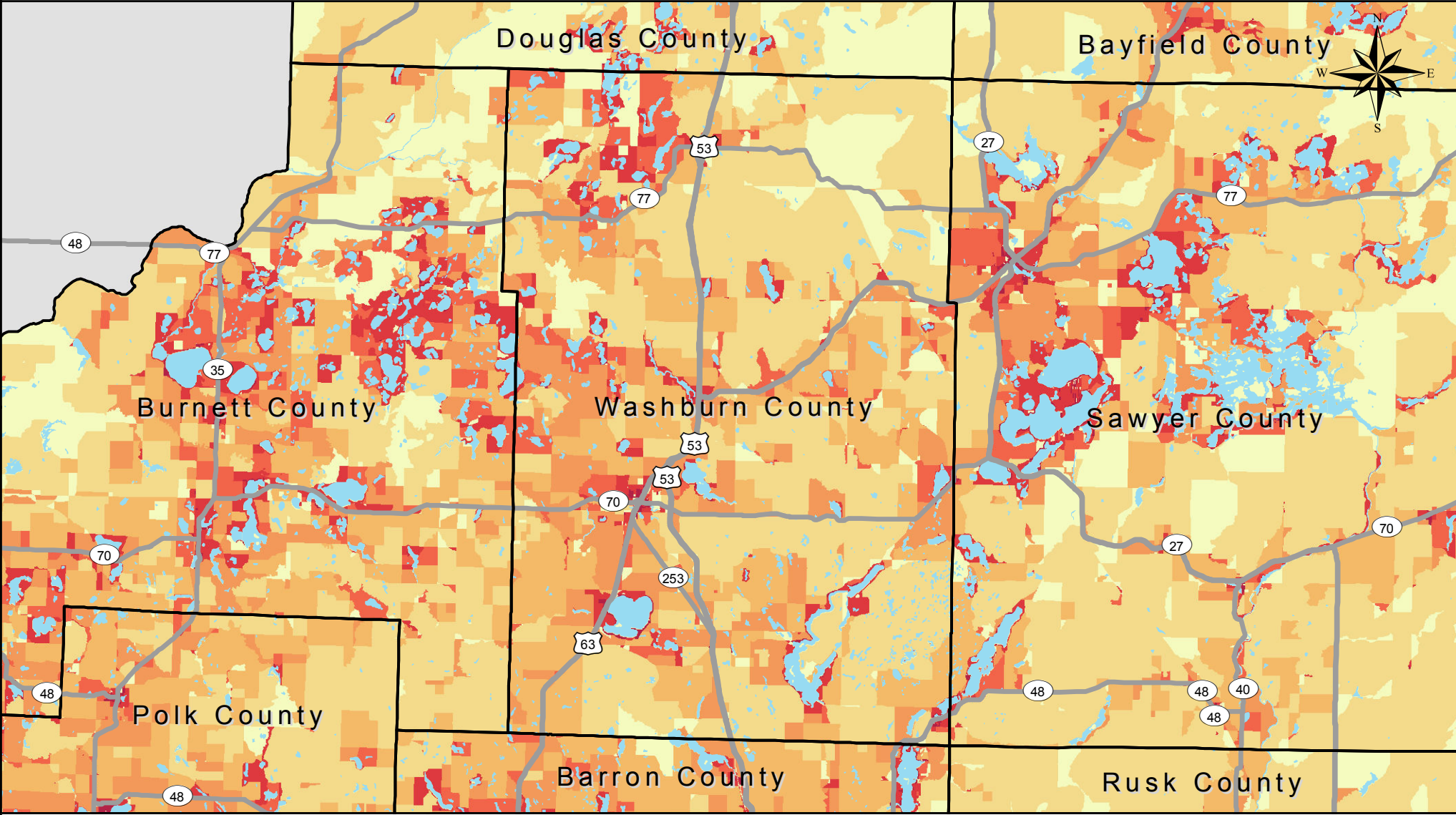
Sources:
 Roads: ArcGIS Streetmap USA, 2010
 1990 Housing Density: US Census Bureau (census blocks)

Produced at APL by Greg Grube

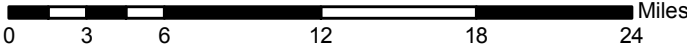
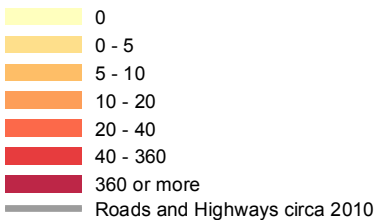


Applied Population Laboratory
 UW Madison
<http://www.apl.wisc.edu/>

Census 2000 Housing Density Washburn County



Housing Units Per Square Mile



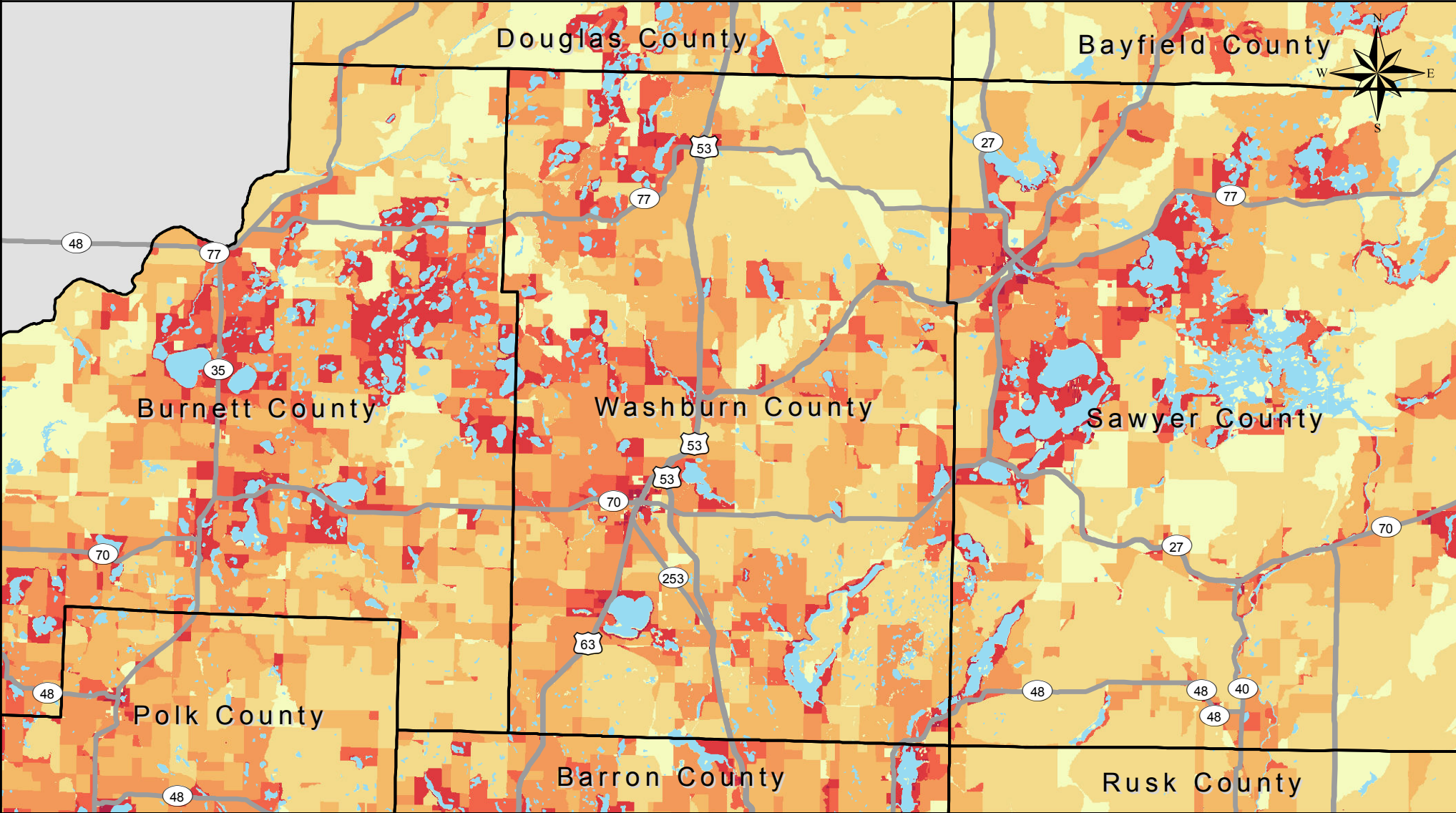
Sources:
 Roads: ArcGIS Streetmap USA, 2010
 2010 Housing Density: US Census Bureau (census blocks)

Produced at APL by Greg Grube

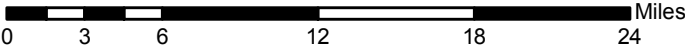
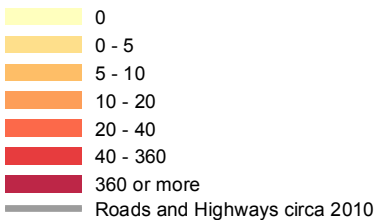


Applied Population Laboratory
 UW Madison
<http://www.apl.wisc.edu/>

Census 2010 Housing Density Washburn County



Housing Units Per Square Mile



Sources:
 Roads: ArcGIS Streetmap USA, 2010
 2010 Housing Density: US Census Bureau (census blocks)

Produced at APL by Greg Grube



Applied Population Laboratory
 UW Madison
<http://www.apl.wisc.edu/>