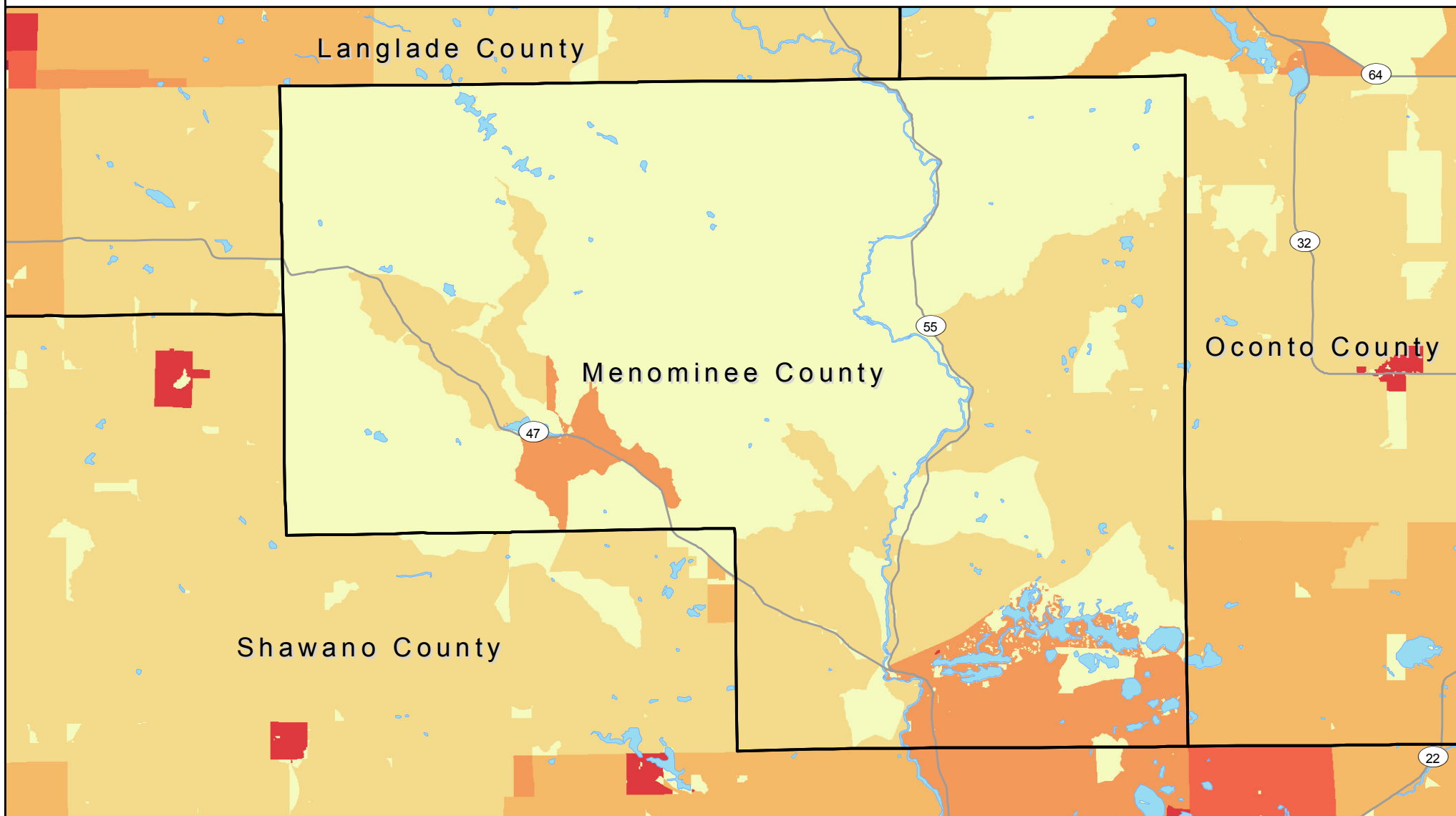
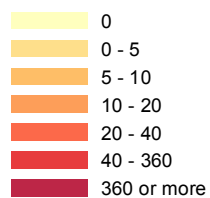


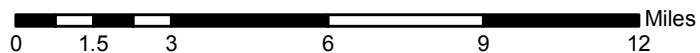
# Estimated 1940 Housing Density Menominee County



## Housing Units Per Square Mile



Grey line: Roads and Highways circa 2010



## Sources:

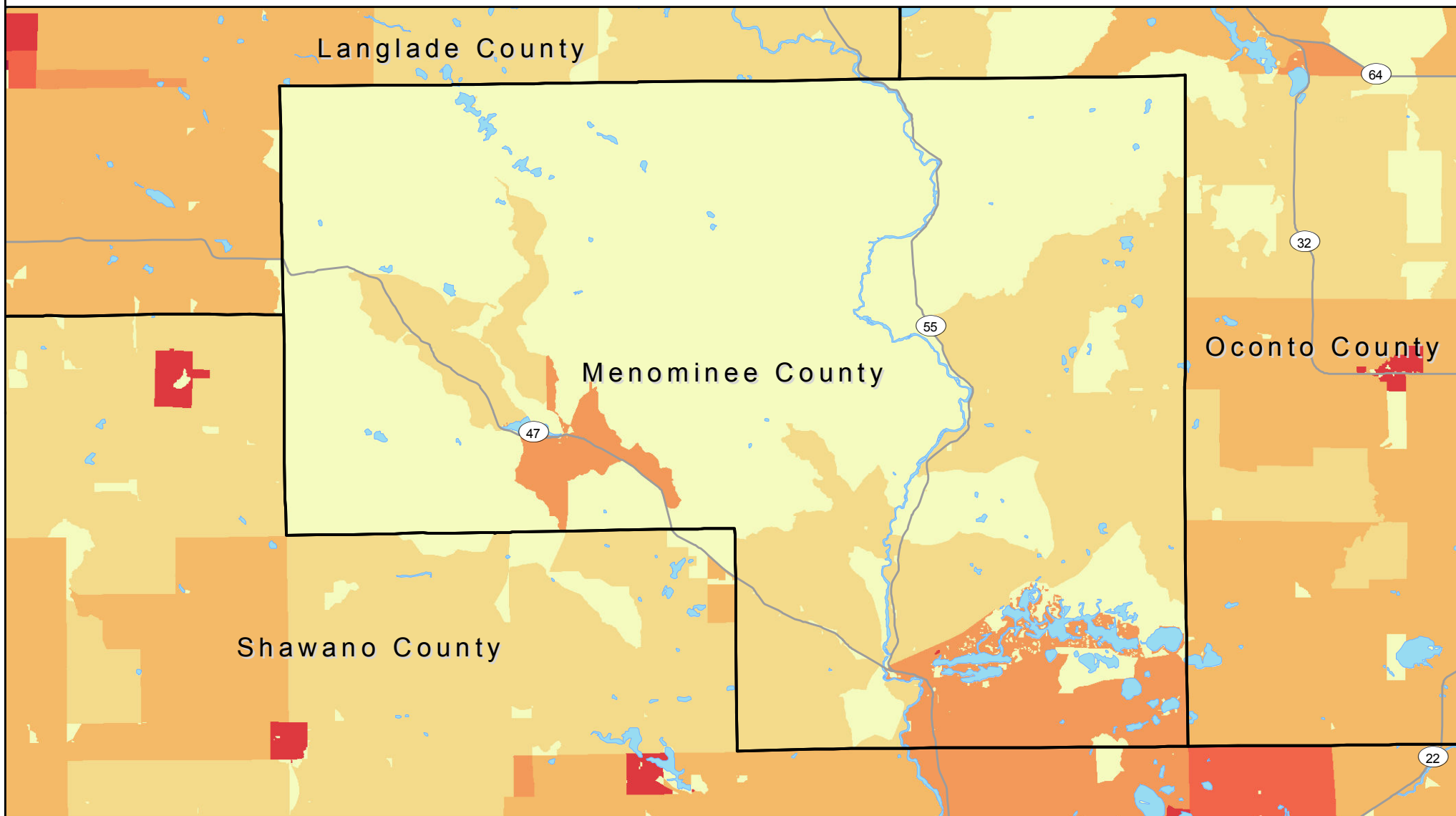
Roads: ArcGIS Streetmap USA, 2010  
 1940 - 1980 Housing Density: US Census Partial Block Group Data  
 Hammer, R. B. S. I. Stewart, R. Winkler, V. C. Radeloff,  
 and P. R. Voss. 2004. Characterizing spatial and temporal  
 residential density patterns across the U.S. Midwest, 1940-1990.  
 Landscape and Urban Planning 69: 183-199.  
<http://silvis.forest.wisc.edu/old/Library/HousingData.php>

Produced at APL by Greg Grube

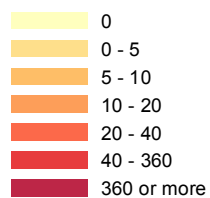


Applied Population Laboratory  
 UW Madison  
<http://www.apl.wisc.edu/>

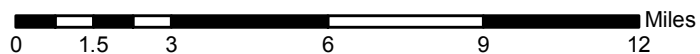
# Estimated 1950 Housing Density Menominee County



## Housing Units Per Square Mile



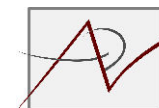
— Roads and Highways circa 2010



## Sources:

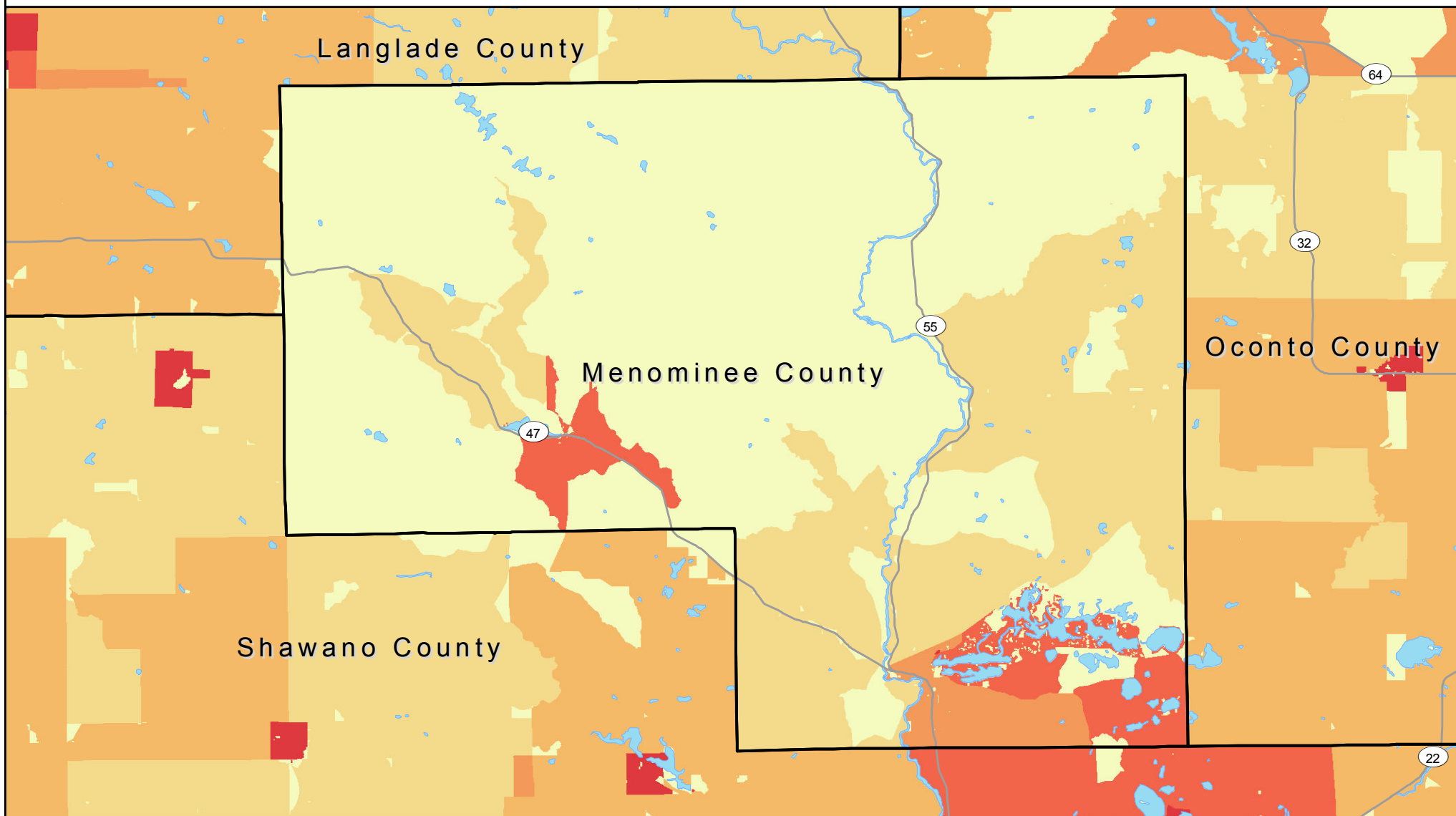
Roads: ArcGIS Streetmap USA, 2010  
 1940 - 1980 Housing Density: US Census Partial Block Group Data  
 Hammer, R. B. S. I. Stewart, R. Winkler, V. C. Radeloff,  
 and P. R. Voss. 2004. Characterizing spatial and temporal  
 residential density patterns across the U.S. Midwest, 1940-1990.  
 Landscape and Urban Planning 69: 183-199.  
<http://silvis.forest.wisc.edu/old/Library/HousingData.php>

Produced at APL by Greg Grube

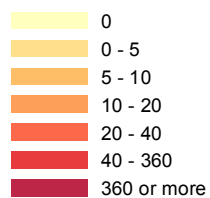


Applied Population Laboratory  
 UW Madison  
<http://www.apl.wisc.edu/>

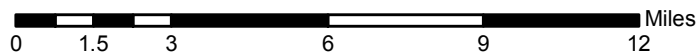
# Estimated 1960 Housing Density Menominee County



## Housing Units Per Square Mile



— Roads and Highways circa 2010



## Sources:

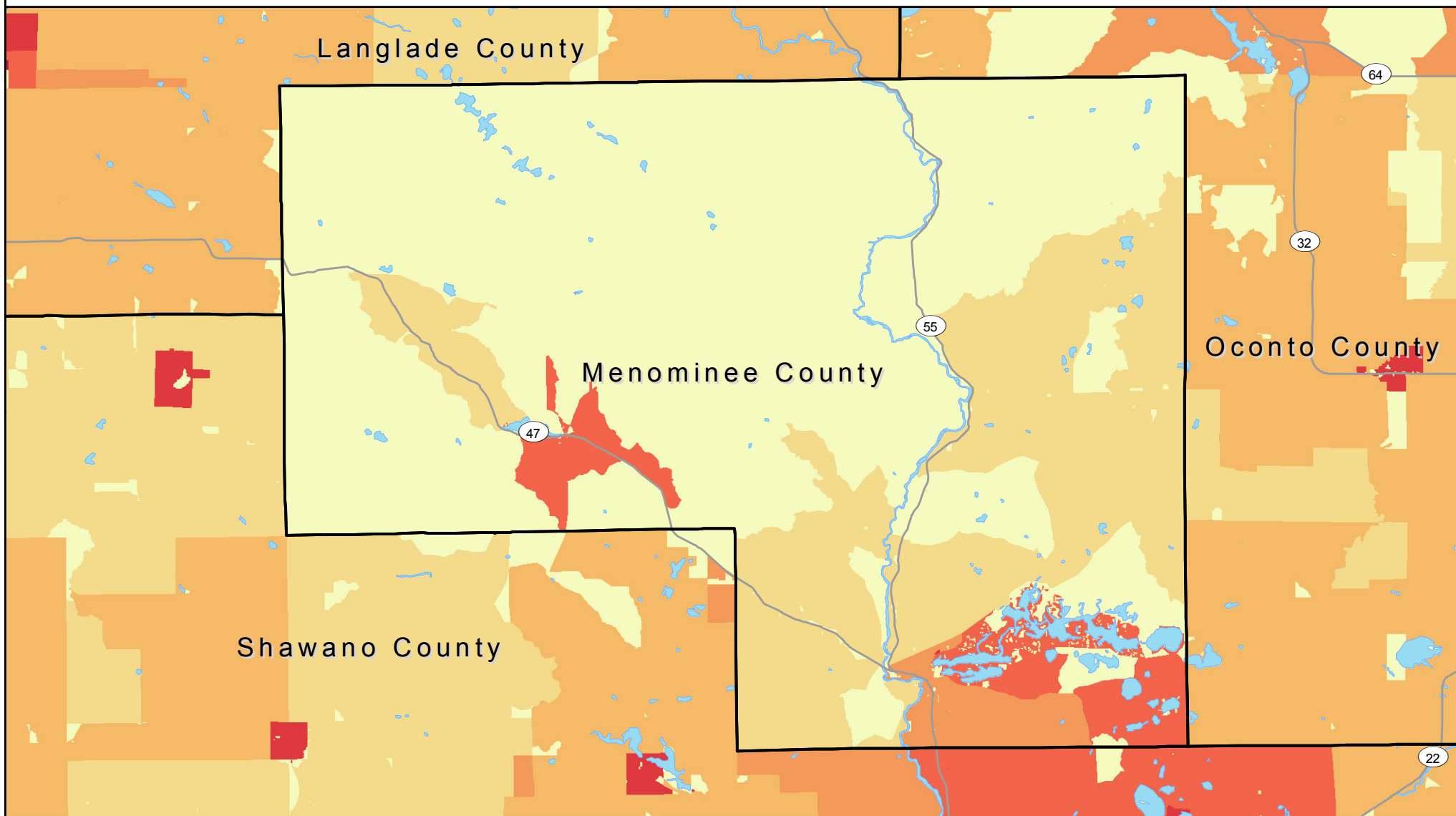
Roads: ArcGIS Streetmap USA, 2010  
 1940 - 1980 Housing Density: US Census Partial Block Group Data  
 Hammer, R. B. S. I. Stewart, R. Winkler, V. C. Radeloff,  
 and P. R. Voss. 2004. Characterizing spatial and temporal  
 residential density patterns across the U.S. Midwest, 1940-1990.  
 Landscape and Urban Planning 69: 183-199.  
<http://silvis.forest.wisc.edu/old/Library/HousingData.php>

Produced at APL by Greg Grube

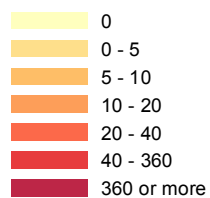


Applied Population Laboratory  
 UW Madison  
<http://www.apl.wisc.edu/>

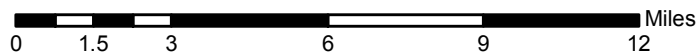
# Estimated 1970 Housing Density Menominee County



## Housing Units Per Square Mile



— Roads and Highways circa 2010



## Sources:

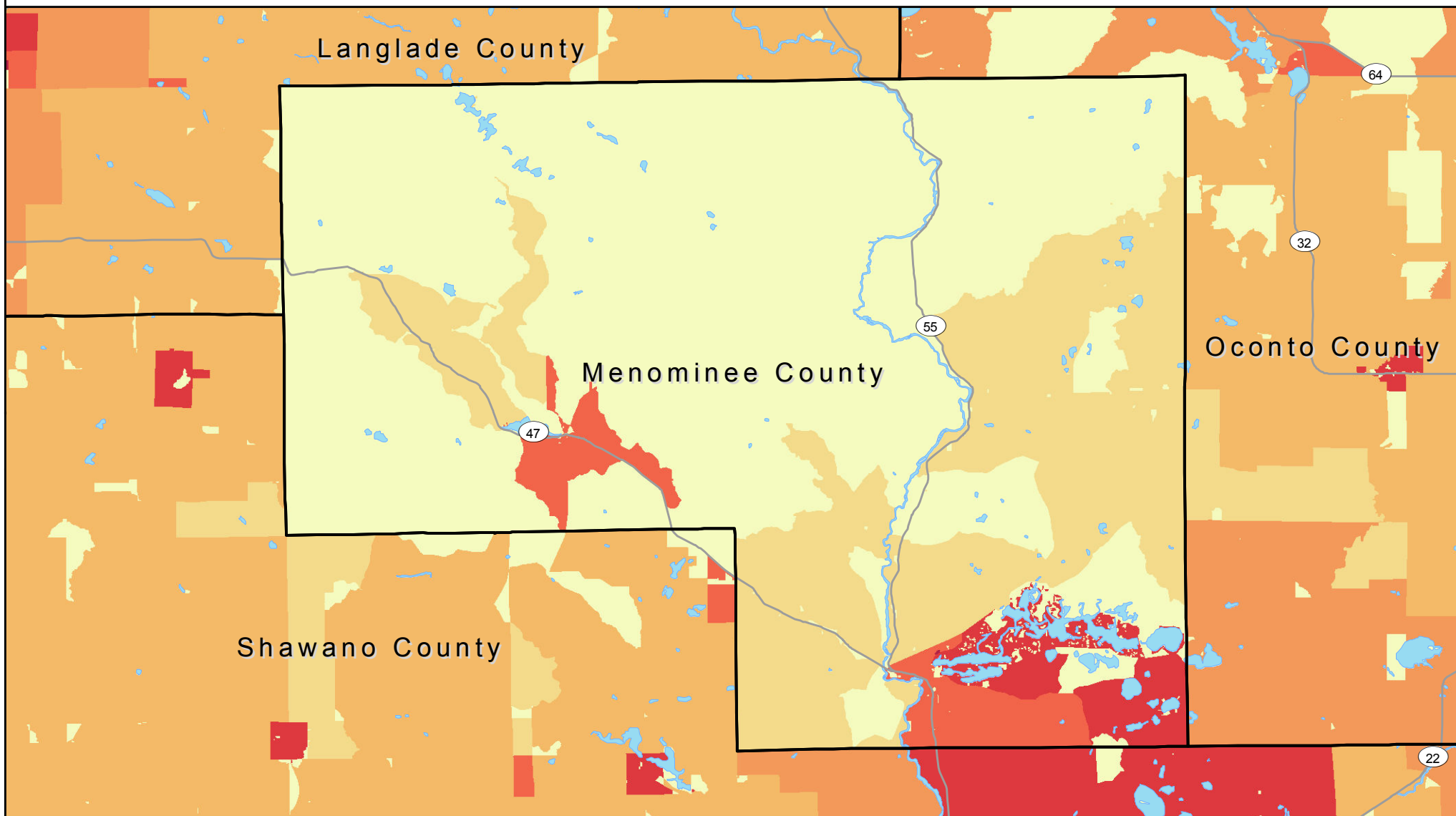
Roads: ArcGIS Streetmap USA, 2010  
 1940 - 1980 Housing Density: US Census Partial Block Group Data  
 Hammer, R. B. S. I. Stewart, R. Winkler, V. C. Radeloff,  
 and P. R. Voss. 2004. Characterizing spatial and temporal  
 residential density patterns across the U.S. Midwest, 1940-1990.  
 Landscape and Urban Planning 69: 183-199.  
<http://silvis.forest.wisc.edu/old/Library/HousingData.php>

Produced at APL by Greg Grube

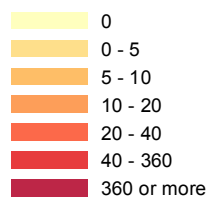


Applied Population Laboratory  
 UW Madison  
<http://www.apl.wisc.edu/>

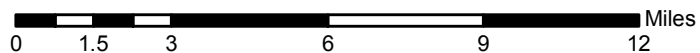
# Estimated 1980 Housing Density Menominee County



## Housing Units Per Square Mile



— Roads and Highways circa 2010



## Sources:

Roads: ArcGIS Streetmap USA, 2010  
 1940 - 1980 Housing Density: US Census Partial Block Group Data  
 Hammer, R. B. S. I. Stewart, R. Winkler, V. C. Radeloff,  
 and P. R. Voss. 2004. Characterizing spatial and temporal  
 residential density patterns across the U.S. Midwest, 1940-1990.  
 Landscape and Urban Planning 69: 183-199.  
<http://silvis.forest.wisc.edu/old/Library/HousingData.php>

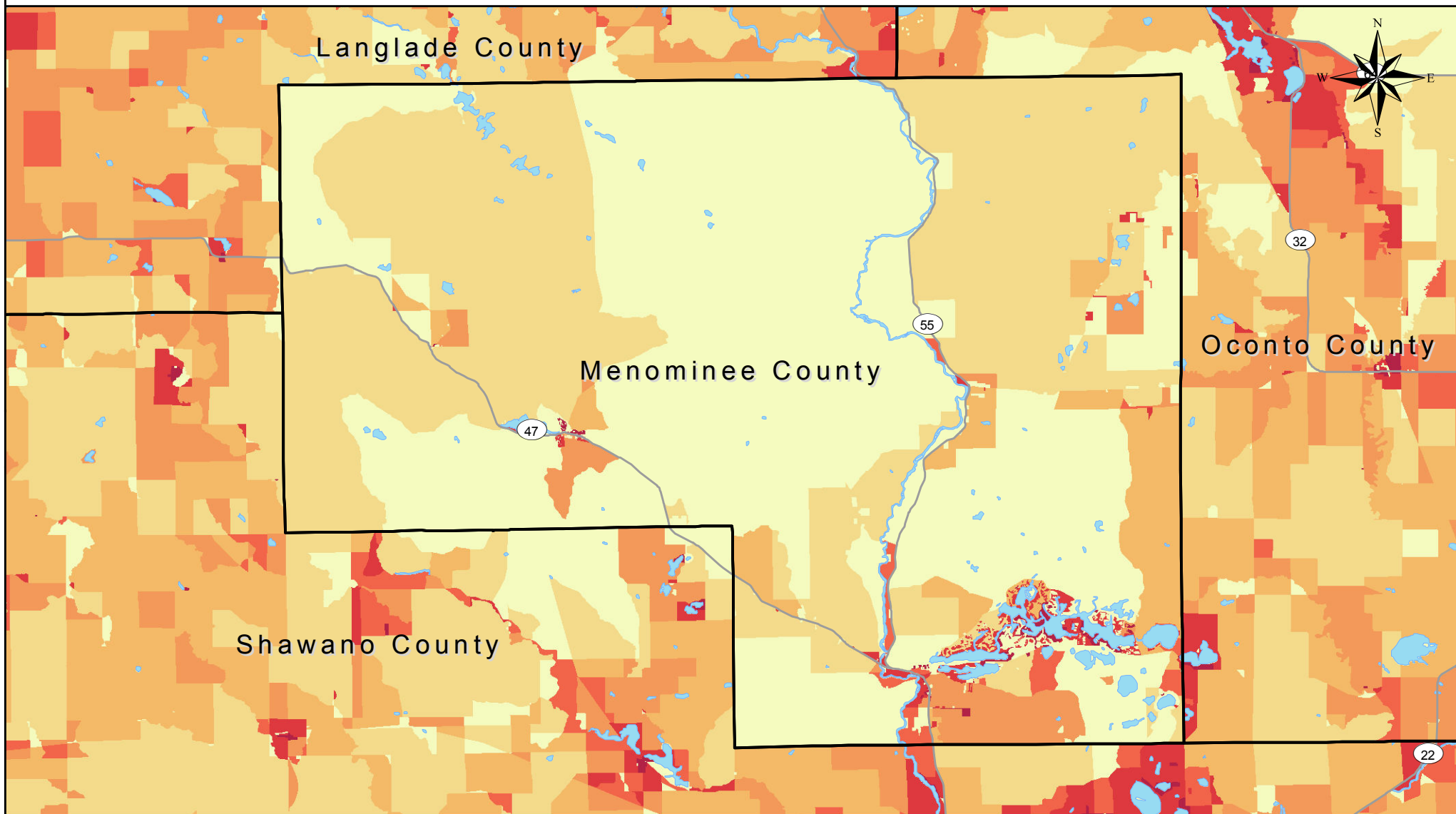
Produced at APL by Greg Grube



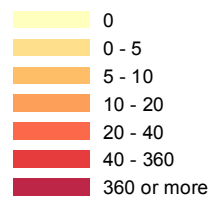
Applied Population Laboratory  
 UW Madison  
<http://www.apl.wisc.edu/>



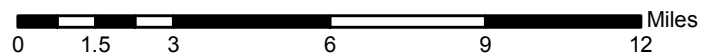
# Census 1990 Housing Density Menominee County



## Housing Units Per Square Mile



— Roads and Highways circa 2010



## Sources:

Roads: ArcGIS Streetmap USA, 2010

1990 Housing Density: US Census Bureau (census blocks)

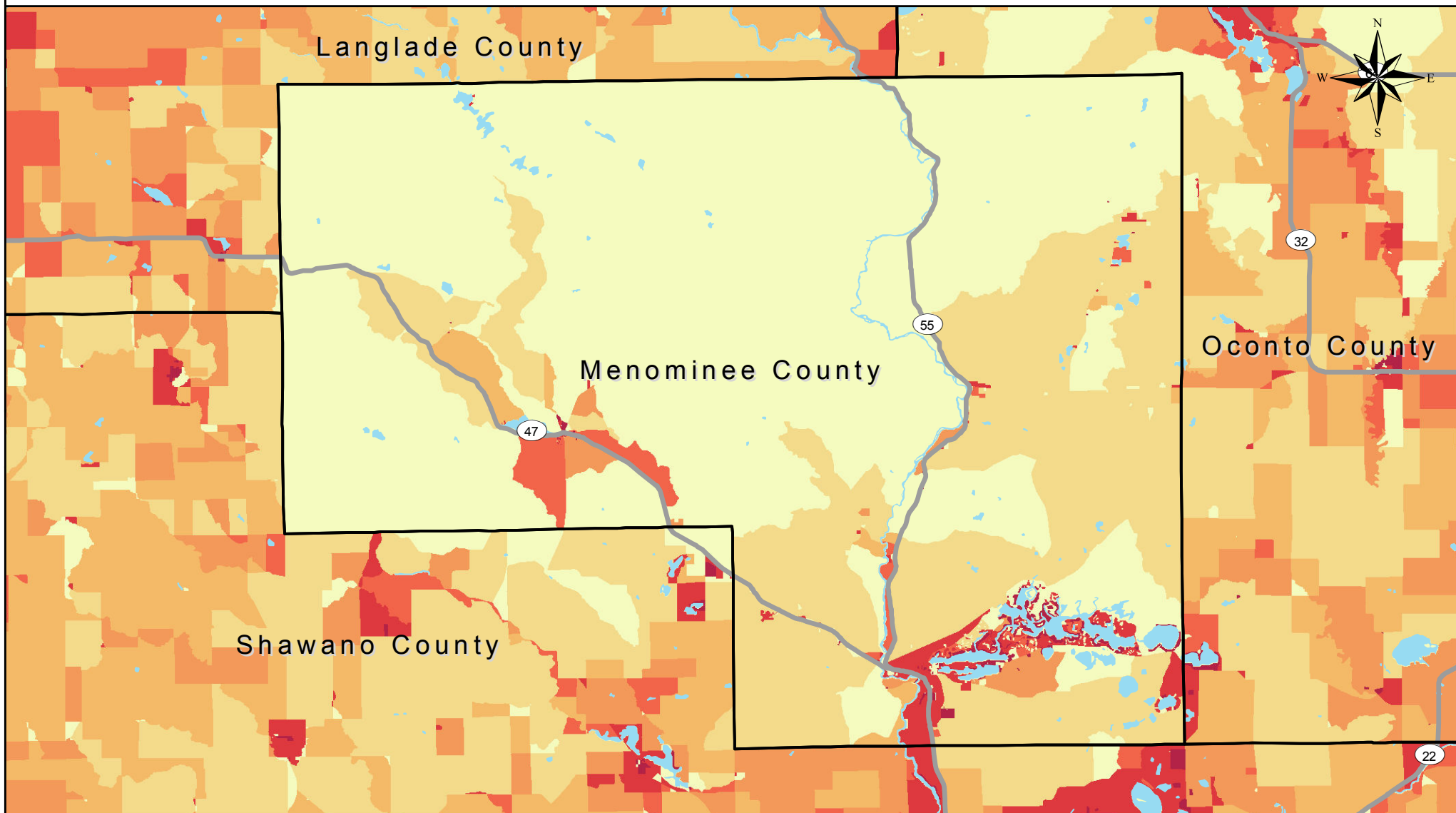
Produced at APL by Greg Grube



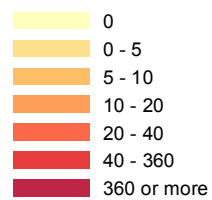
Applied Population Laboratory  
UW Madison

<http://www.apl.wisc.edu/>

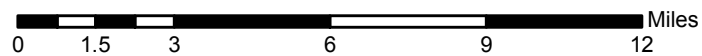
# Census 2000 Housing Density Menominee County



## Housing Units Per Square Mile



— Roads and Highways circa 2010



## Sources:

Roads: ArcGIS Streetmap USA, 2010

2010 Housing Density: US Census Bureau (census blocks)

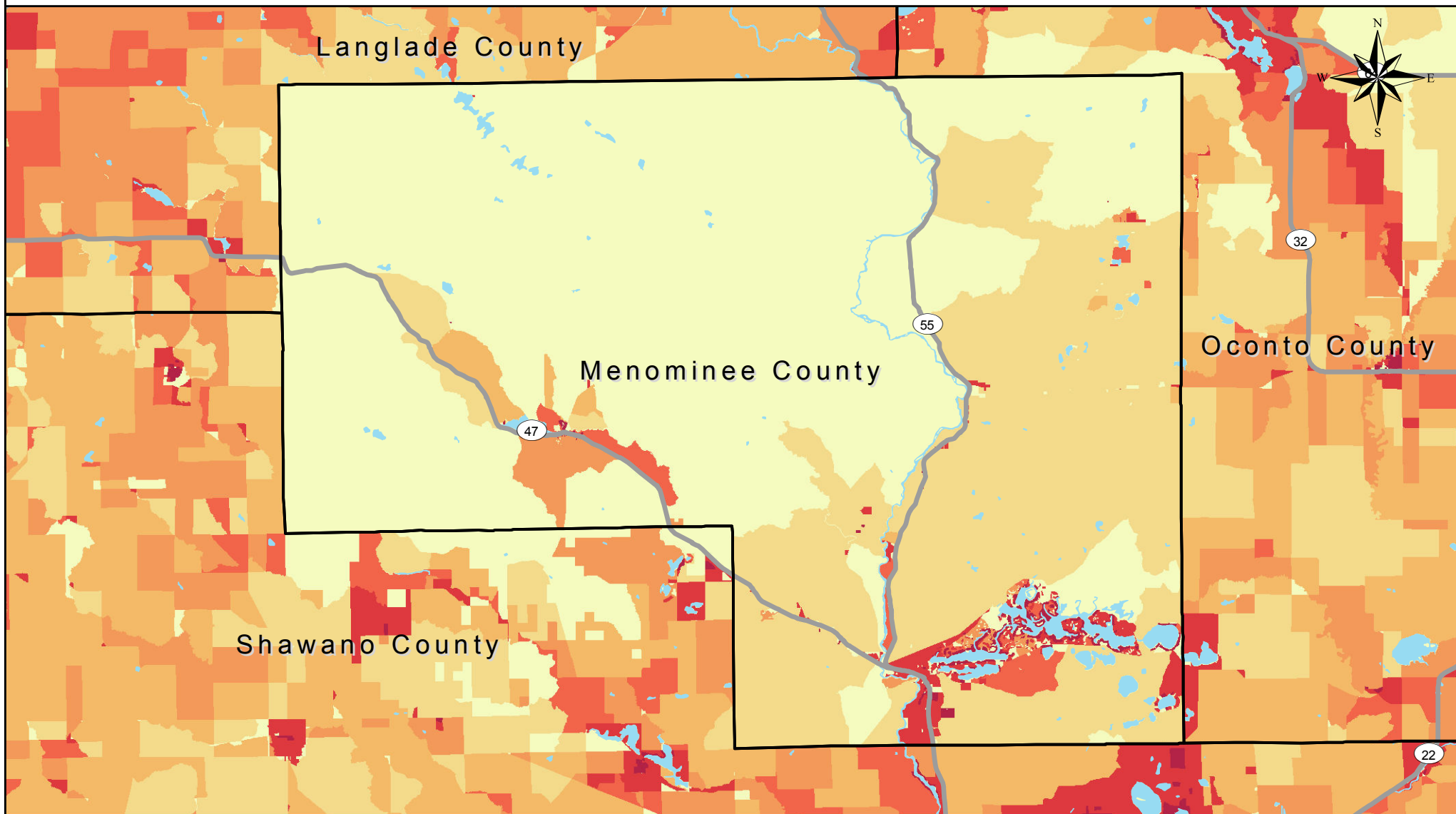
Produced at APL by Greg Grube



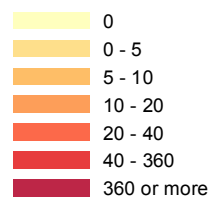
Applied Population Laboratory  
UW Madison

<http://www.apl.wisc.edu/>

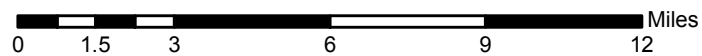
# Census 2010 Housing Density Menominee County



## Housing Units Per Square Mile



— Roads and Highways circa 2010



## Sources:

Roads: ArcGIS Streetmap USA, 2010

2010 Housing Density: US Census Bureau (census blocks)

Produced at APL by Greg Grube



Applied Population Laboratory  
UW Madison

<http://www.apl.wisc.edu/>