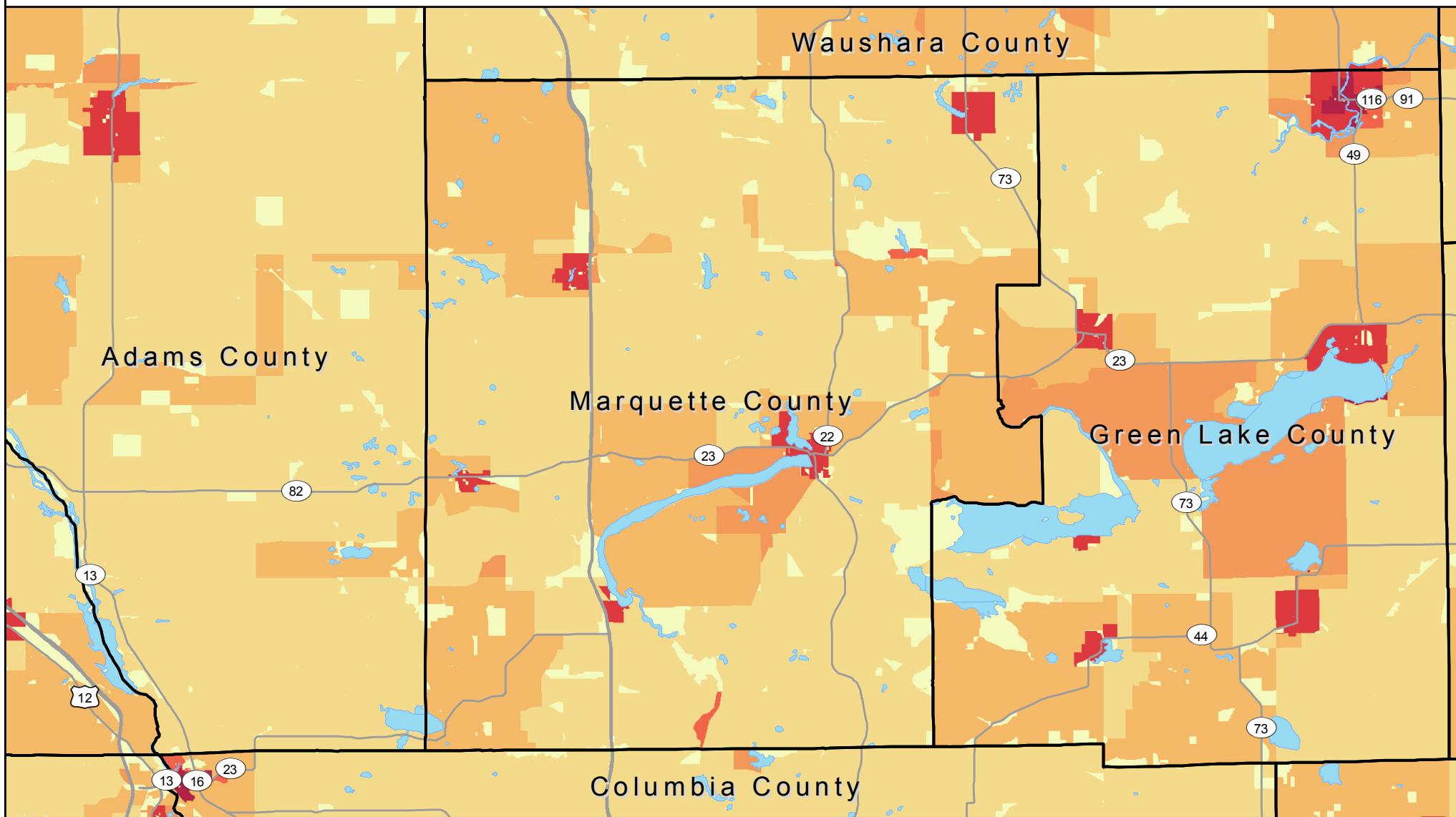
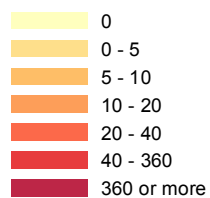


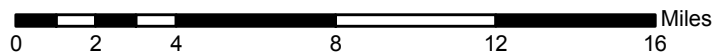
Estimated 1940 Housing Density Marquette County



Housing Units Per Square Mile



— Roads and Highways circa 2010



Sources:

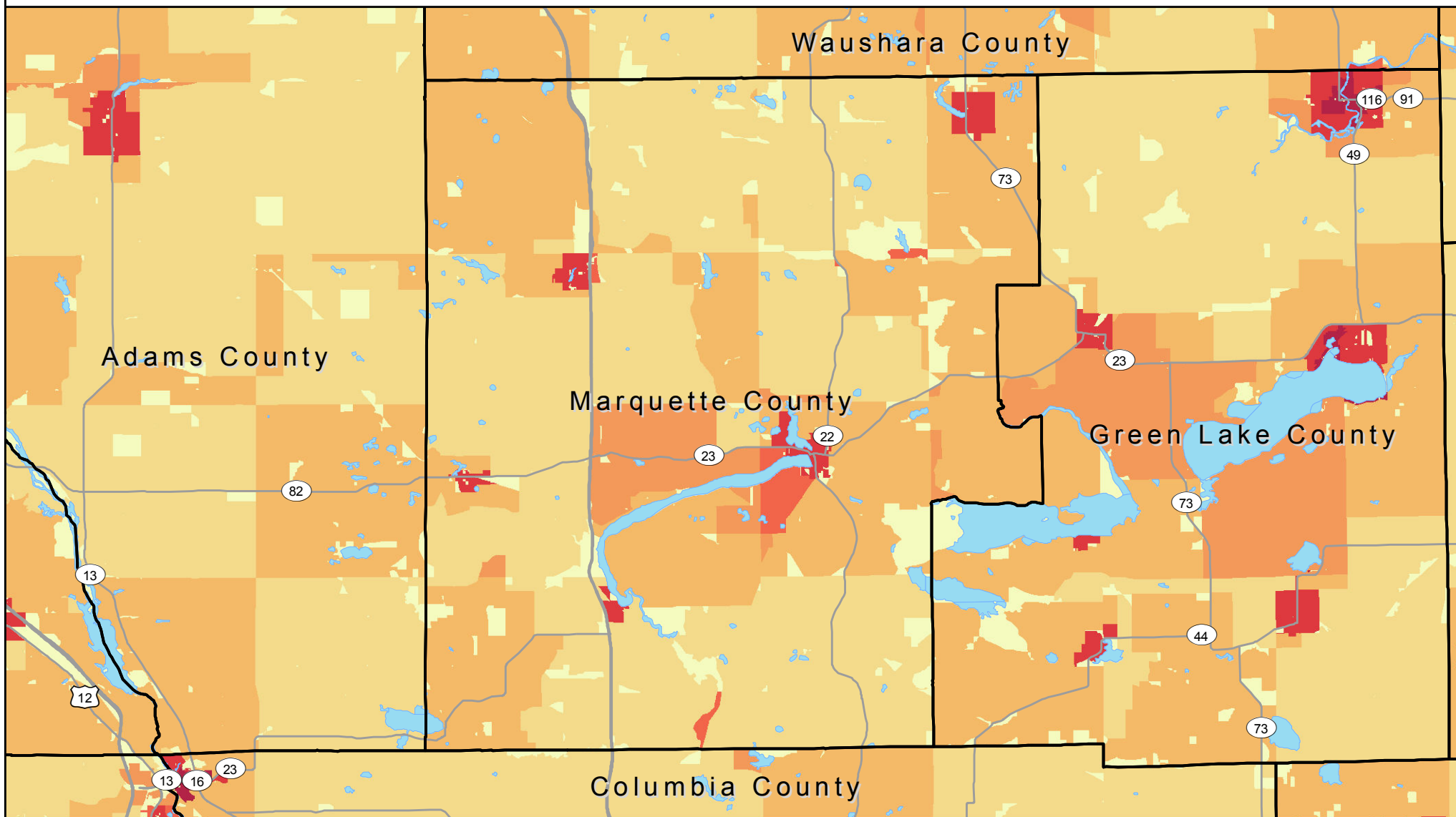
Roads: ArcGIS Streetmap USA, 2010
 1940 - 1980 Housing Density: US Census Partial Block Group Data
 Hammer, R. B. S. I. Stewart, R. Winkler, V. C. Radeloff,
 and P. R. Voss. 2004. Characterizing spatial and temporal
 residential density patterns across the U.S. Midwest, 1940-1990.
 Landscape and Urban Planning 69: 183-199.
<http://silvis.forest.wisc.edu/old/Library/HousingData.php>

Produced at APL by Greg Grube

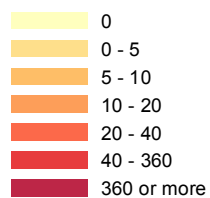


Applied Population Laboratory
 UW Madison
<http://www.apl.wisc.edu/>

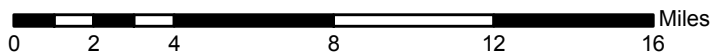
Estimated 1950 Housing Density Marquette County



Housing Units Per Square Mile



— Roads and Highways circa 2010



Sources:

Roads: ArcGIS Streetmap USA, 2010

1940 - 1980 Housing Density: US Census Partial Block Group Data

Hammer, R. B. S. I. Stewart, R. Winkler, V. C. Radeloff, and P. R. Voss. 2004. Characterizing spatial and temporal residential density patterns across the U.S. Midwest, 1940-1990. Landscape and Urban Planning 69: 183-199.

<http://silvis.forest.wisc.edu/old/Library/HousingData.php>

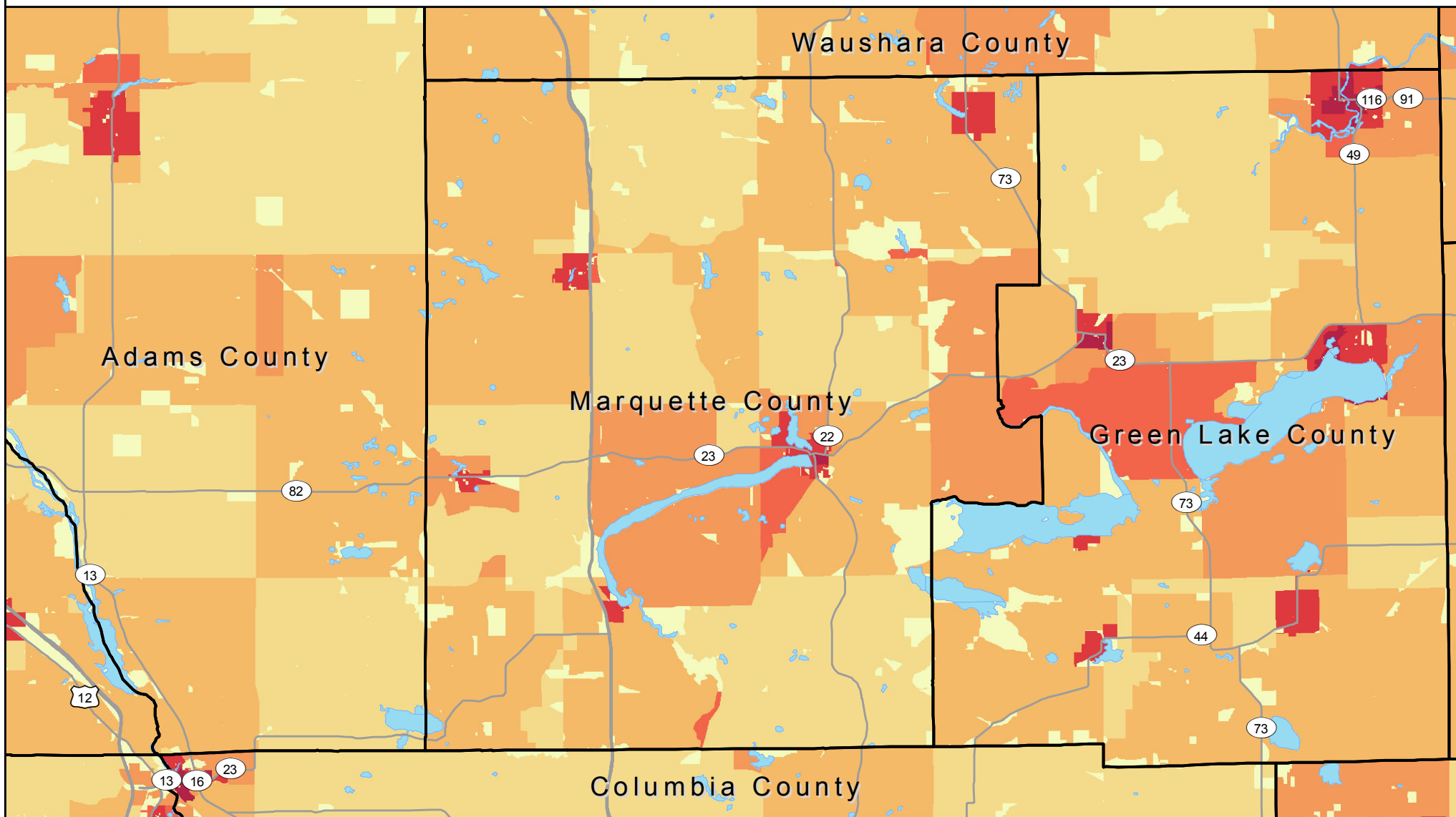
Produced at APL by Greg Grube



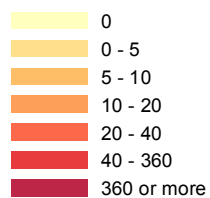
Applied Population Laboratory
UW Madison

<http://www.apl.wisc.edu/>

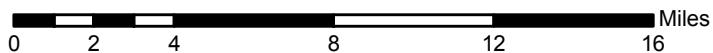
Estimated 1960 Housing Density Marquette County



Housing Units Per Square Mile



— Roads and Highways circa 2010



Sources:

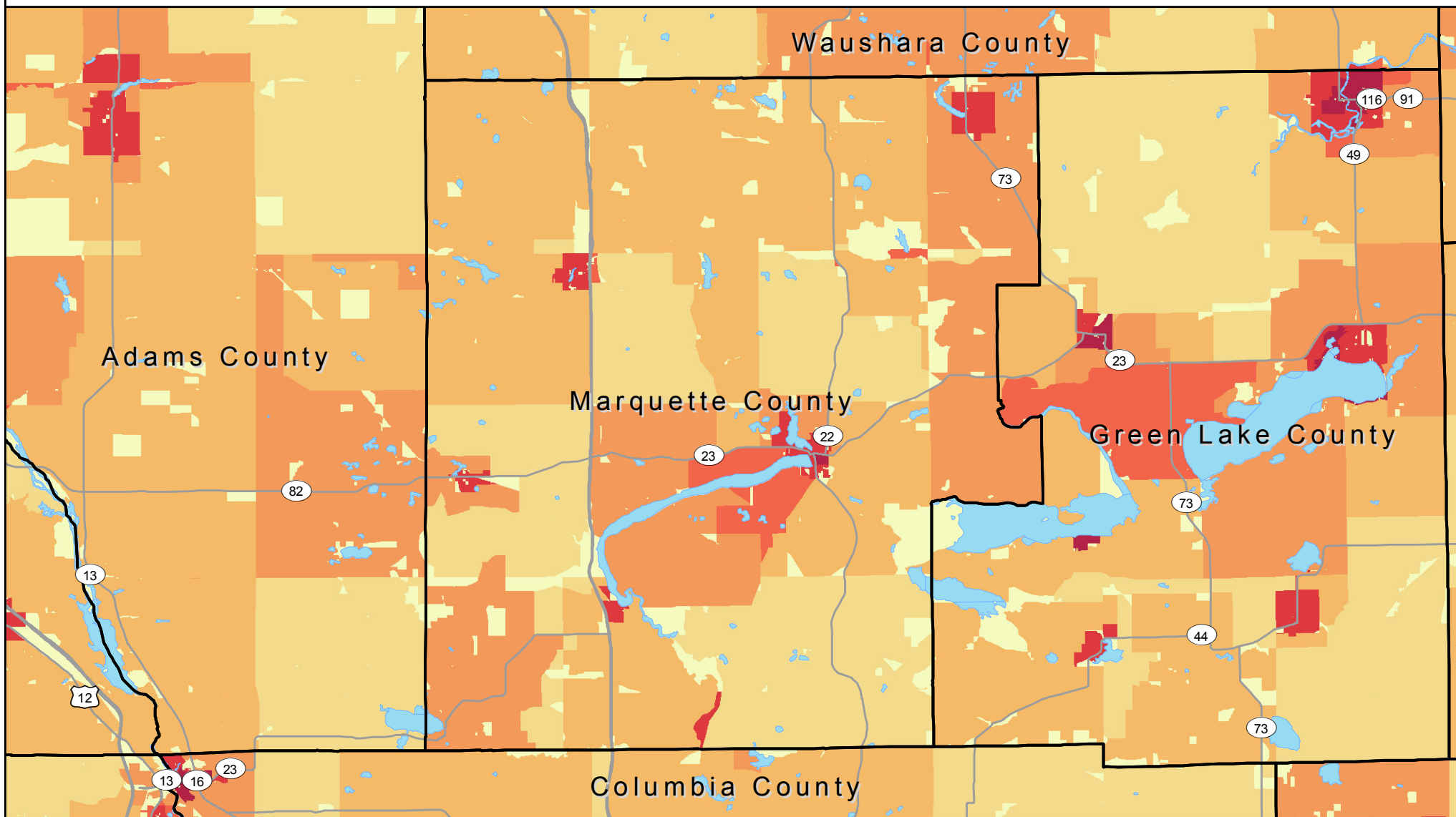
Roads: ArcGIS Streetmap USA, 2010
 1940 - 1980 Housing Density: US Census Partial Block Group Data
 Hammer, R. B. S. I. Stewart, R. Winkler, V. C. Radeloff,
 and P. R. Voss. 2004. Characterizing spatial and temporal
 residential density patterns across the U.S. Midwest, 1940-1990.
 Landscape and Urban Planning 69: 183-199.
<http://silvis.forest.wisc.edu/old/Library/HousingData.php>

Produced at APL by Greg Grube

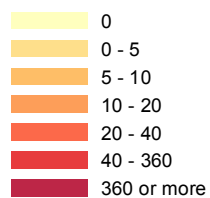


Applied Population Laboratory
 UW Madison
<http://www.apl.wisc.edu/>

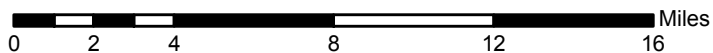
Estimated 1970 Housing Density Marquette County



Housing Units Per Square Mile



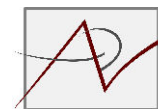
— Roads and Highways circa 2010



Sources:

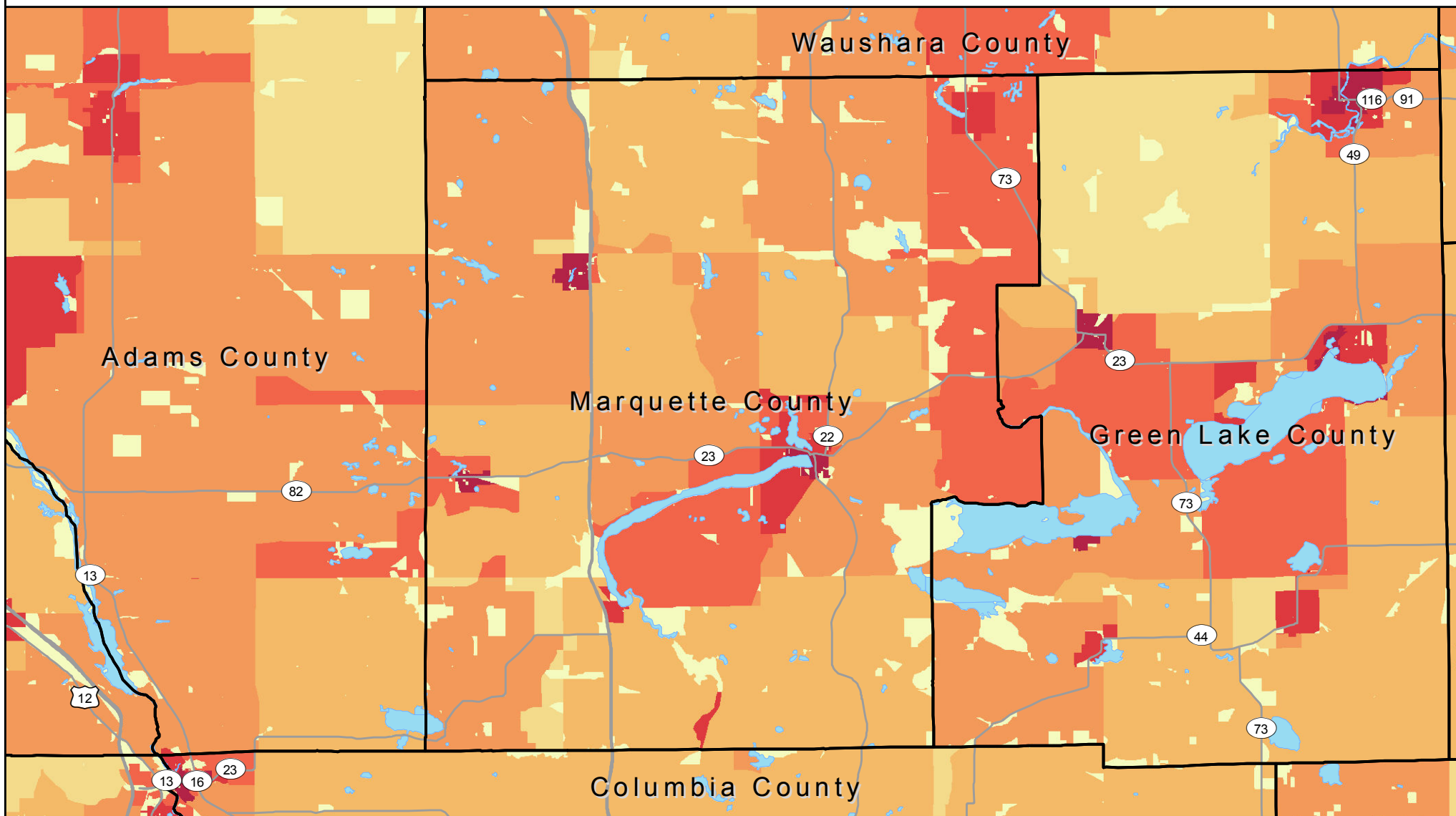
Roads: ArcGIS Streetmap USA, 2010
 1940 - 1980 Housing Density: US Census Partial Block Group Data
 Hammer, R. B. S. I. Stewart, R. Winkler, V. C. Radeloff,
 and P. R. Voss. 2004. Characterizing spatial and temporal
 residential density patterns across the U.S. Midwest, 1940-1990.
 Landscape and Urban Planning 69: 183-199.
<http://silvis.forest.wisc.edu/old/Library/HousingData.php>

Produced at APL by Greg Grube

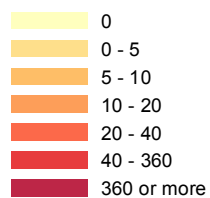


Applied Population Laboratory
 UW Madison
<http://www.apl.wisc.edu/>

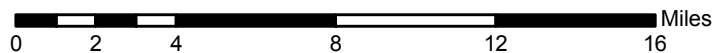
Estimated 1980 Housing Density Marquette County



Housing Units Per Square Mile



— Roads and Highways circa 2010



Sources:

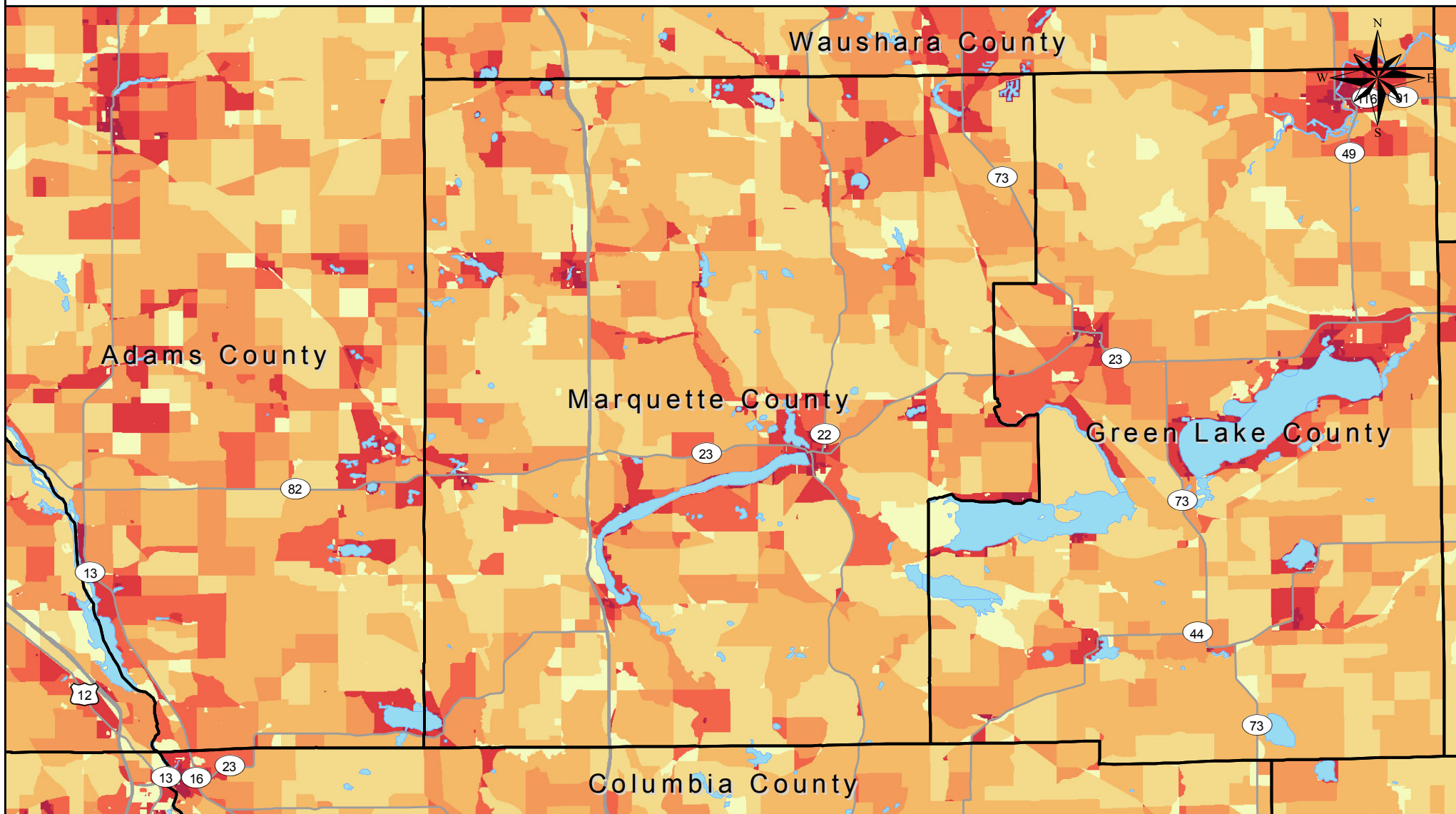
Roads: ArcGIS Streetmap USA, 2010
 1940 - 1980 Housing Density: US Census Partial Block Group Data
 Hammer, R. B. S. I. Stewart, R. Winkler, V. C. Radeloff,
 and P. R. Voss. 2004. Characterizing spatial and temporal
 residential density patterns across the U.S. Midwest, 1940-1990.
 Landscape and Urban Planning 69: 183-199.
<http://silvis.forest.wisc.edu/old/Library/HousingData.php>

Produced at APL by Greg Grube

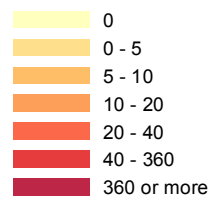


Applied Population Laboratory
 UW Madison
<http://www.apl.wisc.edu/>

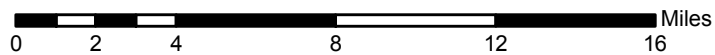
Census 1990 Housing Density Marquette County



Housing Units Per Square Mile



— Roads and Highways circa 2010



Sources:

Roads: ArcGIS Streetmap USA, 2010

1990 Housing Density: US Census Bureau (census blocks)

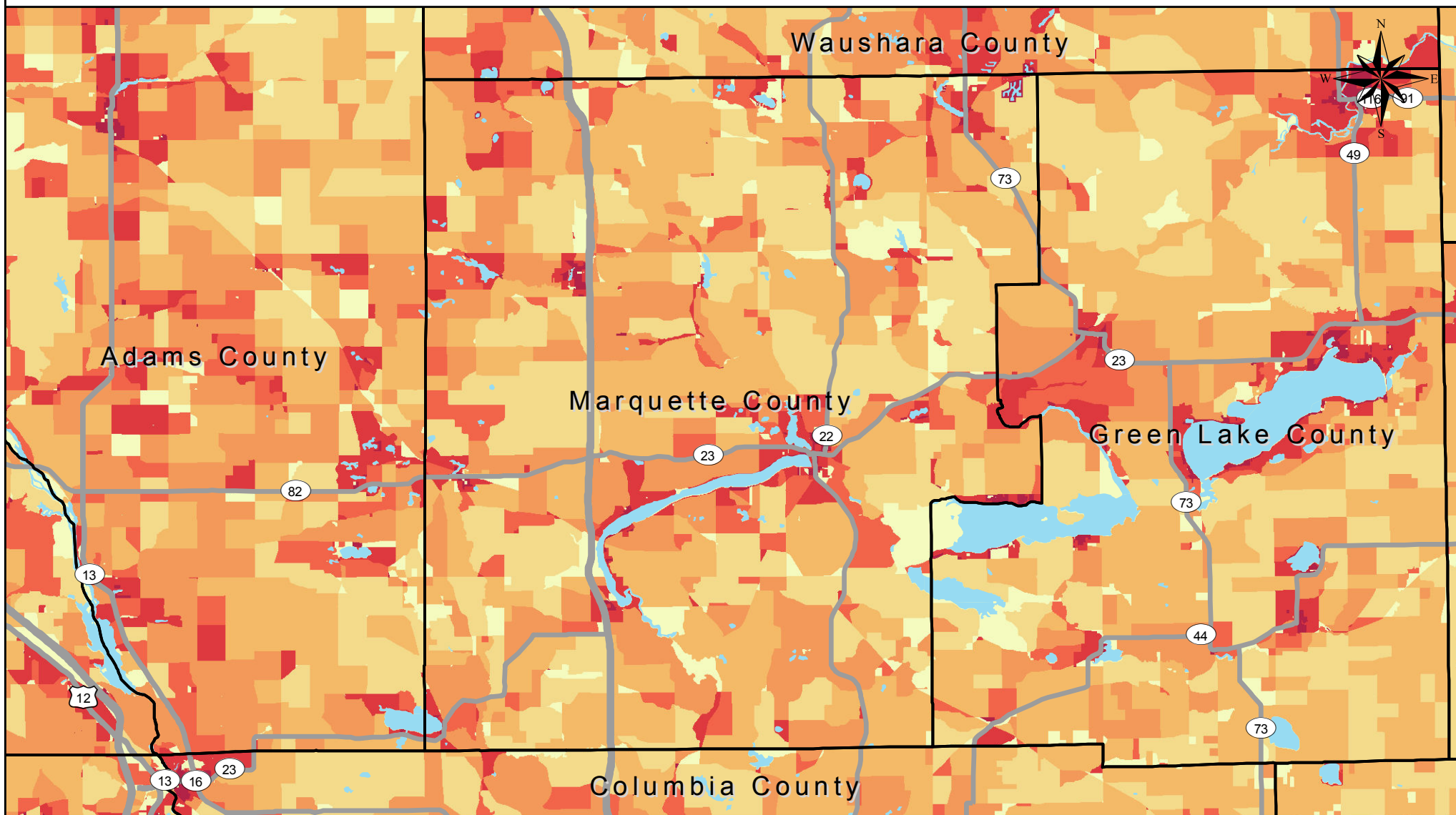
Produced at APL by Greg Grube



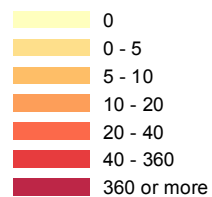
Applied Population Laboratory
UW Madison

<http://www.apl.wisc.edu/>

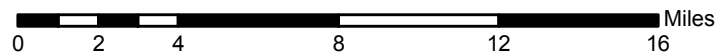
Census 2000 Housing Density Marquette County



Housing Units Per Square Mile



— Roads and Highways circa 2010



Sources:

Roads: ArcGIS Streetmap USA, 2010

2010 Housing Density: US Census Bureau (census blocks)

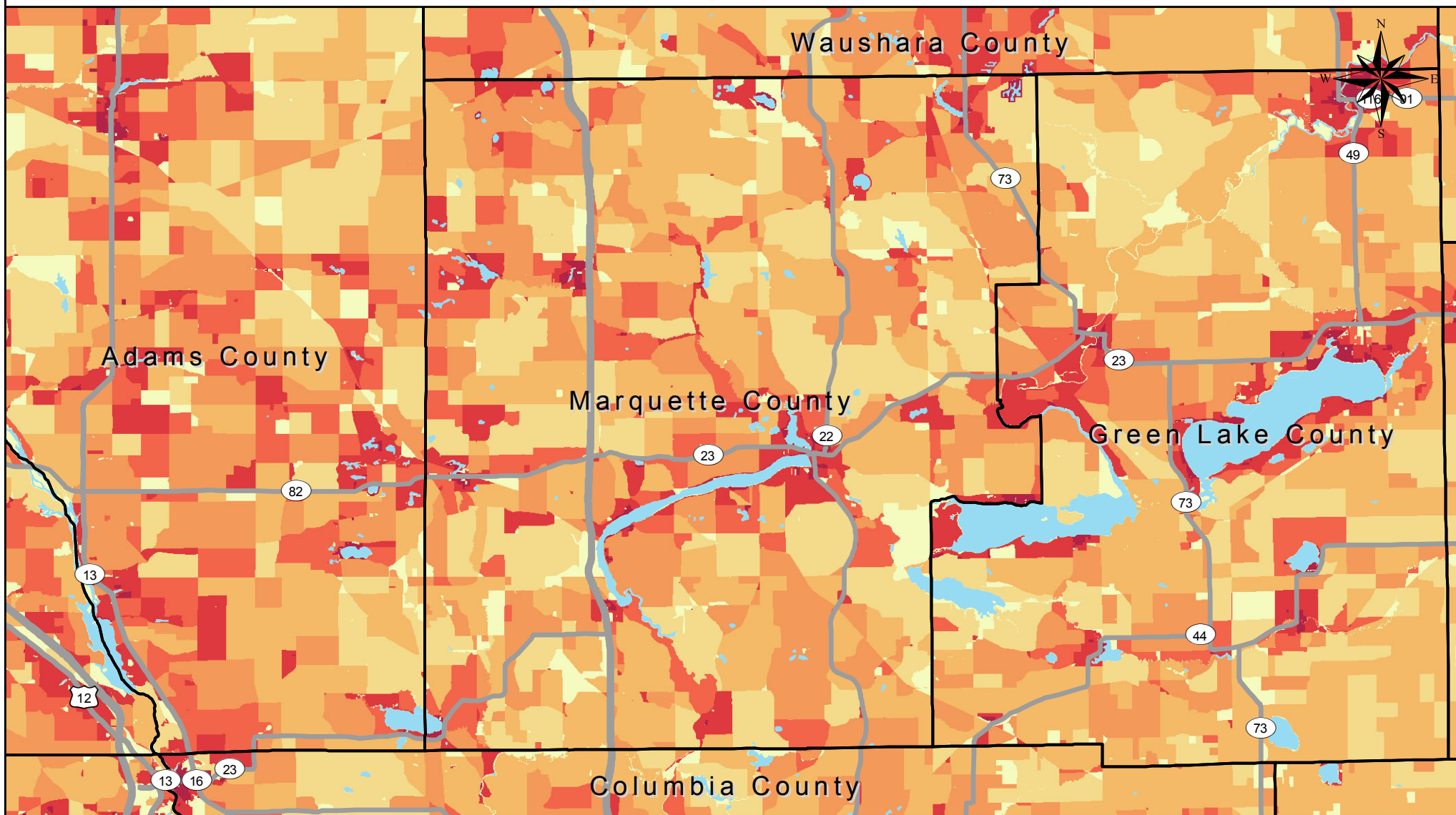
Produced at APL by Greg Grube



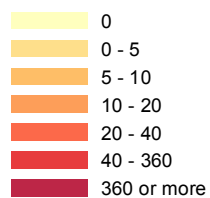
Applied Population Laboratory
UW Madison

<http://www.apl.wisc.edu/>

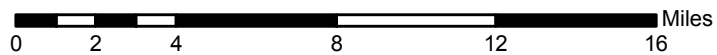
Census 2010 Housing Density Marquette County



Housing Units Per Square Mile



— Roads and Highways circa 2010



Sources:

Roads: ArcGIS Streetmap USA, 2010
2010 Housing Density: US Census Bureau (census blocks)

Produced at APL by Greg Grube



Applied Population Laboratory
UW Madison
<http://www.apl.wisc.edu/>