

How to Find, Understand & Apply Demographic Data

Katherine White
Department of Rural Sociology
kwhite@ssc.wisc.edu



Introduction

Sources

Interpretation

Application

Resources

Demographic Trends & Spatial Data Analytic Techniques

- Population and Environment
- Poverty
- Migration

GetFacts: Navigation and extraction tool

(<http://www.getfacts.wisc.edu/>)

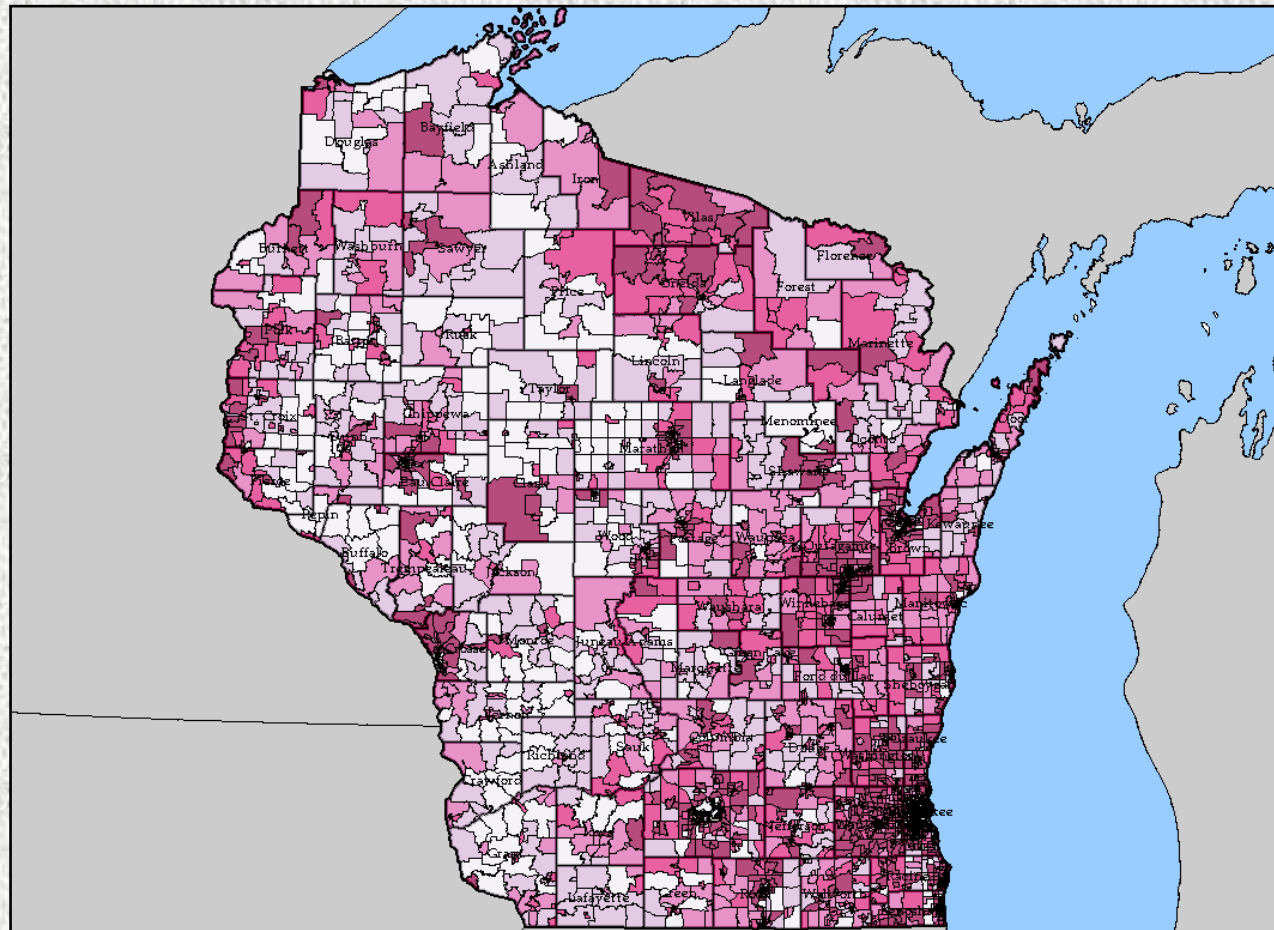
- Supported by the Applied Population Laboratory (APL)
- Decennial census data at various census geographies ranging from counties to tribal land boundaries to school district boundaries
- Automatically calibrates available data at the respective level of geography
- Create thematic maps that incorporate roads and labels
- Extract:
 - Shapefiles with census data appended
 - Excel files of census data

GetFacts

(<http://www.getfacts.wisc.edu/>)

Total Specified
Owner-Occupied
Housing Units

Census Block
Groups, 2000



American FactFinder: Gateway to Census Bureau data products

(http://factfinder.census.gov/home/saff/main.html?_lang=en)

Decennial Census

(http://factfinder.census.gov/jsp/saff/SAFFInfo.jsp?_pagelId=sp4_decennial&_submenuId=)

- Decennial census data at different geographic scales
- Long-form provides detailed information on economic, social and housing based on a sample of the population

American Community Survey (ACS)

(http://factfinder.census.gov/jsp/saff/SAFFInfo.jsp?_pagelId=sp1_acs&_submenuId=)

- Will replace the census long-form
- Large, continuous survey that reports data as a moving-average not a snap-shot of the population at one point in time
- Fully implemented in 2005 and estimates on small areas (low population) will be available in 2010

Decennial Census

Point-in-time estimates that describe the characteristics of an area on a specific date

American Community Survey (ACS)

Describes the characteristics of an area over a specified time period

American Community Survey (ACS)

Schedule of American Community Survey Data Releases

Data Product	Population Threshold	Year of Data Release							
		2006	2007	2008	2009	2010	2011	2012	2013
1-year Estimates	65,000+	2005	2006	2007	2008	2009	2010	2011	2012
3-year Estimates	20,000+			2005-2007	2006-2008	2007-2009	2008-2010	2009-2011	2010-2012
5-year Estimates	All Areas					2005-2009	2006-2010	2007-2011	2008-2012

American FactFinder: Base Table List

U.S. Census Bureau
American FactFinder

Main Search Feedback FAQs Glossary Site Map Help

Select Tables

You are here: [Main](#) > [Data Sets](#) > [Data Sets with Detailed Tables](#) > [Geography](#) > [Tables](#) > Results
2005 American Community Survey, Detailed Tables

■ Choose a table selection method

[by subject](#) [by keyword](#) [show all tables](#)

■ Select one or more tables and click 'Add'

[explain table numbers](#)

B01001. Sex by Age
B01001A. Sex by Age (White Alone)
B01001B. Sex by Age (Black or African American Alone)
B01001C. Sex by Age (American Indian and Alaska Native Alone)
B01001D. Sex by Age (Asian Alone)
B01001E. Sex by Age (Native Hawaiian and Other Pacific Islander Alone)
B01001F. Sex by Age (Some Other Race Alone)
B01001G. Sex by Age (Two or More Races)
B01001H. Sex by Age (White Alone, Not Hispanic or Latino)
B01001I. Sex by Age (Hispanic or Latino)

Abbreviations:
Black - Black or African American
AIAN - American Indian and Alaska Native
NHPI - Native Hawaiian and Other Pacific Islander
SOR - Some Other Race

[What's this?](#)

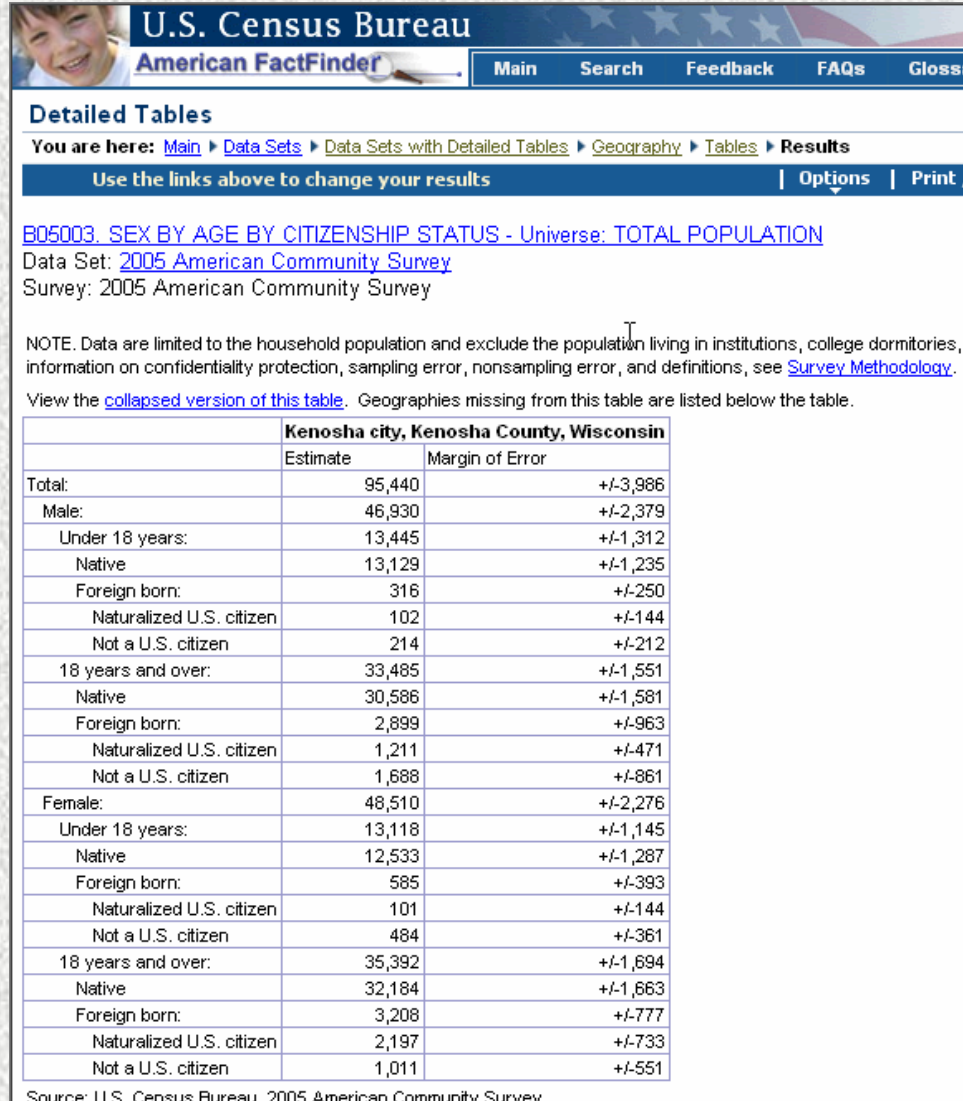
[Add](#)

Current table selections:

B01001. Sex by Age

[Remove](#) [Show Result](#)

American FactFinder: Query Result



U.S. Census Bureau
American FactFinder

Main Search Feedback FAQs Glossary

Detailed Tables

You are here: [Main](#) > [Data Sets](#) > [Data Sets with Detailed Tables](#) > [Geography](#) > [Tables](#) > [Results](#)

Use the links above to change your results | [Options](#) | [Print](#)

[B05003. SEX BY AGE BY CITIZENSHIP STATUS - Universe: TOTAL POPULATION](#)
Data Set: [2005 American Community Survey](#)
Survey: 2005 American Community Survey

NOTE: Data are limited to the household population and exclude the population living in institutions, college dormitories, and other noninstitutional quarters. For more information on confidentiality protection, sampling error, nonsampling error, and definitions, see [Survey Methodology](#).

View the [collapsed version of this table](#). Geographies missing from this table are listed below the table.

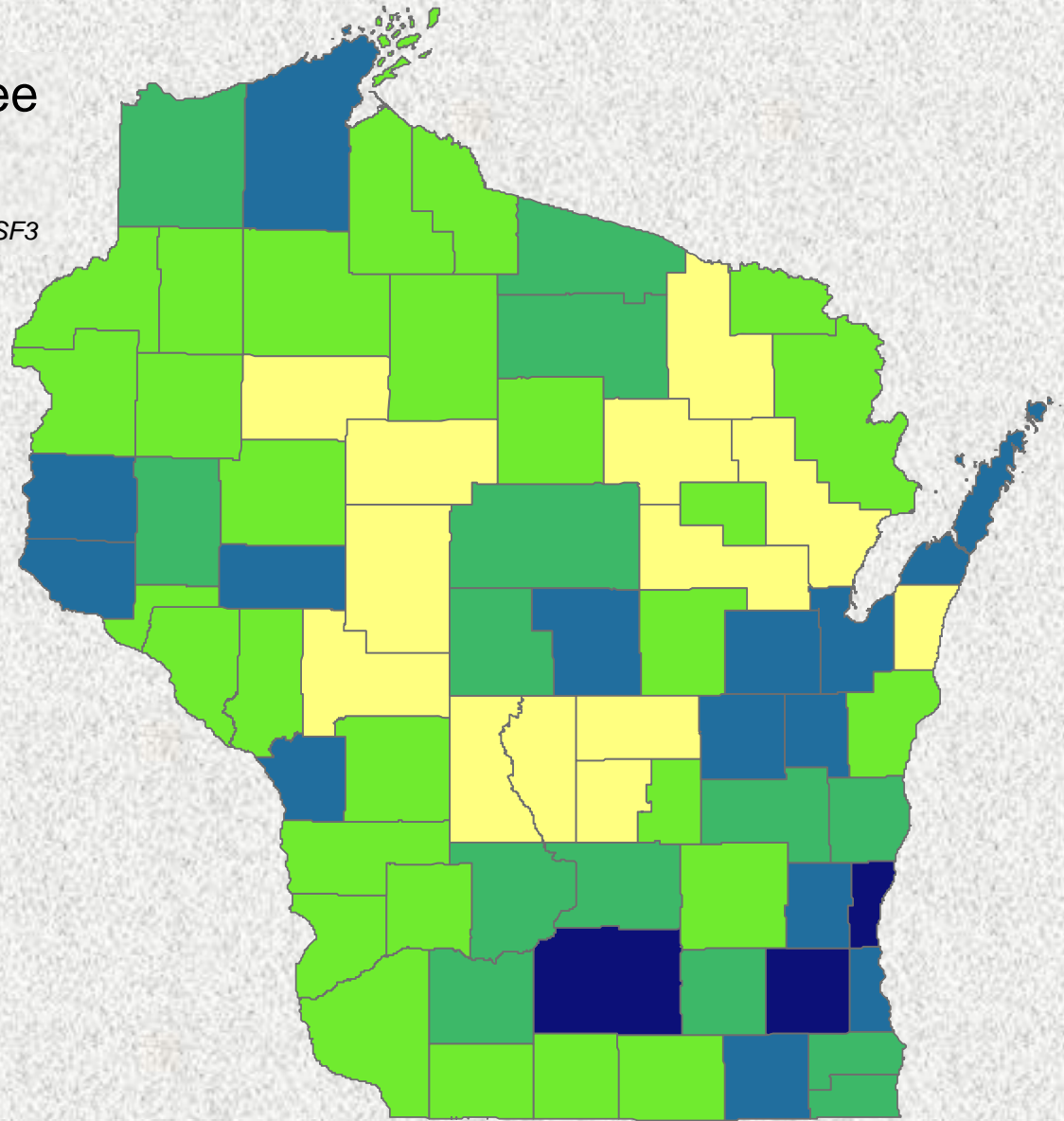
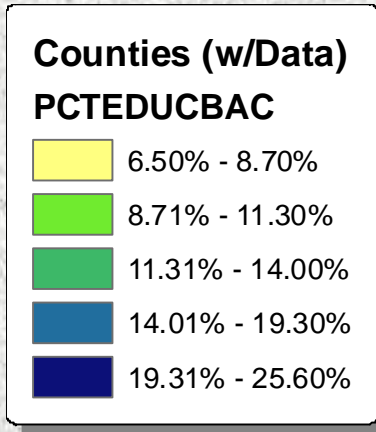
Kenosha city, Kenosha County, Wisconsin		
	Estimate	Margin of Error
Total:	95,440	+/-3,986
Male:	46,930	+/-2,379
Under 18 years:	13,445	+/-1,312
Native	13,129	+/-1,235
Foreign born:	316	+/-250
Naturalized U.S. citizen	102	+/-144
Not a U.S. citizen	214	+/-212
18 years and over:	33,485	+/-1,551
Native	30,586	+/-1,581
Foreign born:	2,899	+/-963
Naturalized U.S. citizen	1,211	+/-471
Not a U.S. citizen	1,688	+/-861
Female:	48,510	+/-2,276
Under 18 years:	13,118	+/-1,145
Native	12,533	+/-1,287
Foreign born:	585	+/-393
Naturalized U.S. citizen	101	+/-144
Not a U.S. citizen	484	+/-361
18 years and over:	35,392	+/-1,694
Native	32,184	+/-1,663
Foreign born:	3,208	+/-777
Naturalized U.S. citizen	2,197	+/-733
Not a U.S. citizen	1,011	+/-551

Source: U.S. Census Bureau, 2005 American Community Survey

Percent Bachelor's Degree

Counties

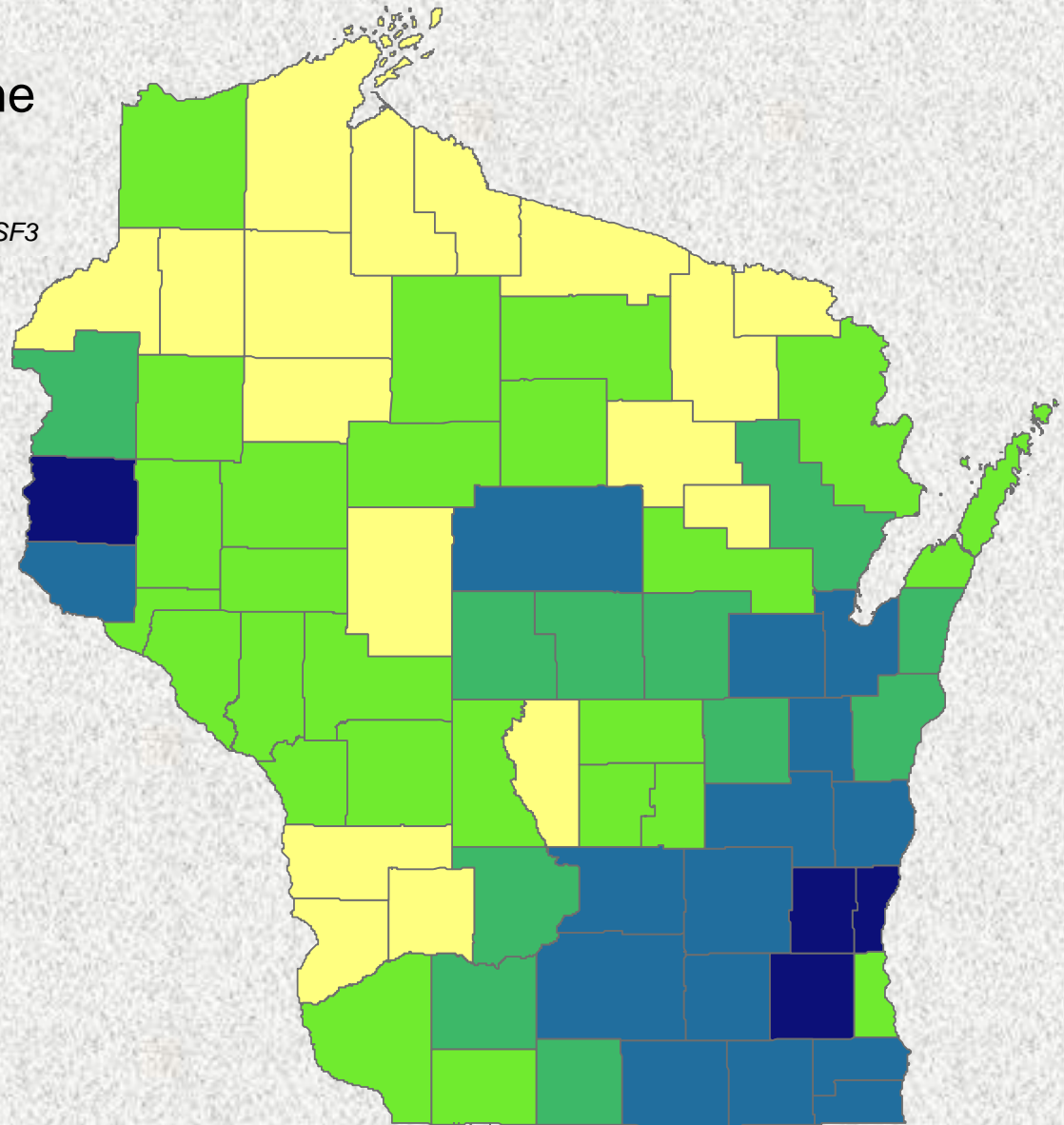
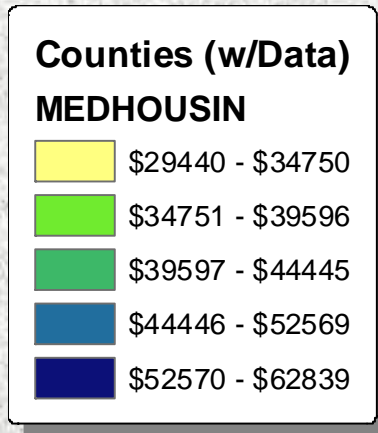
Source: 2000 Census of Population and Housing, SF3



Median Household Income

Counties

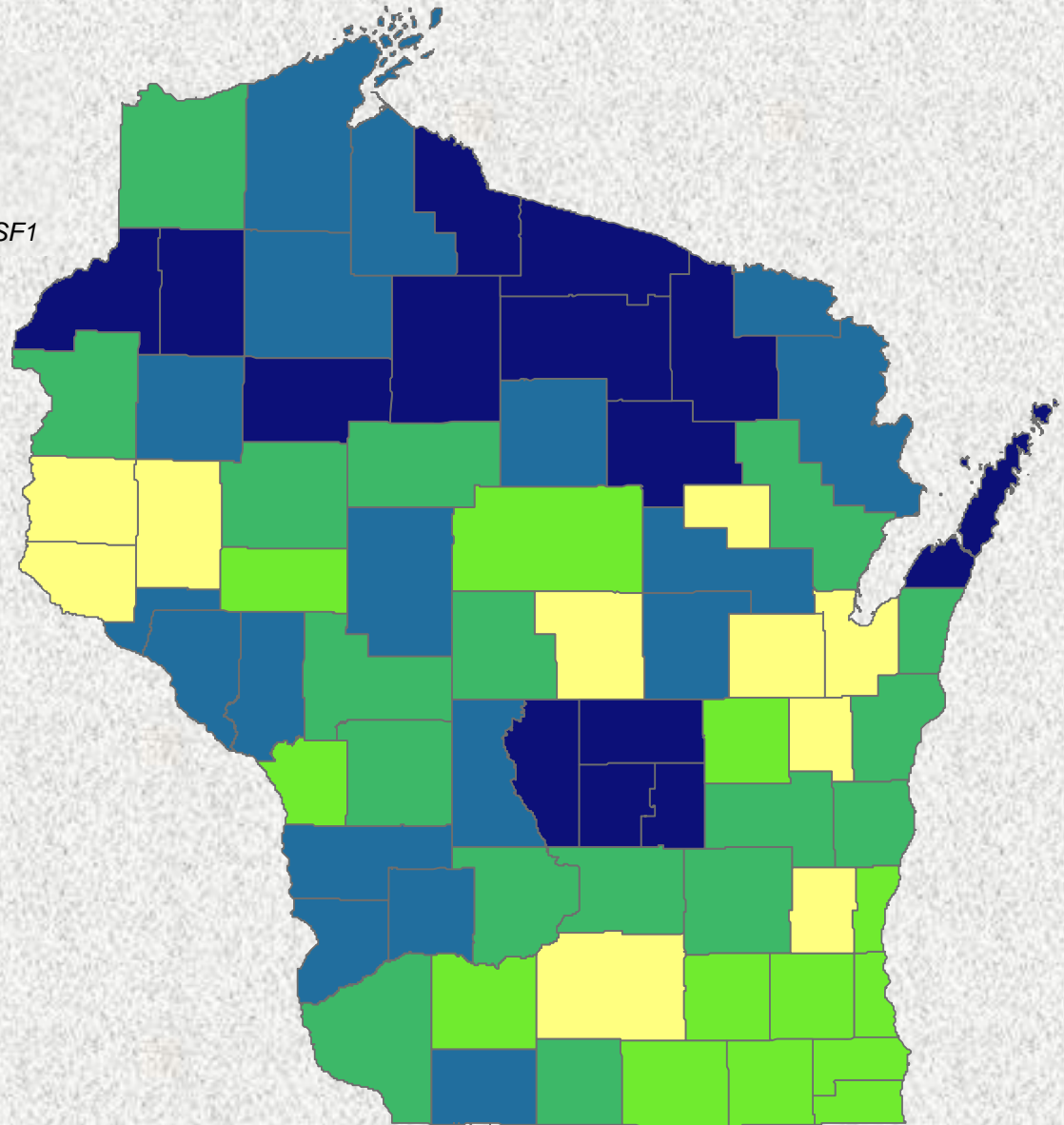
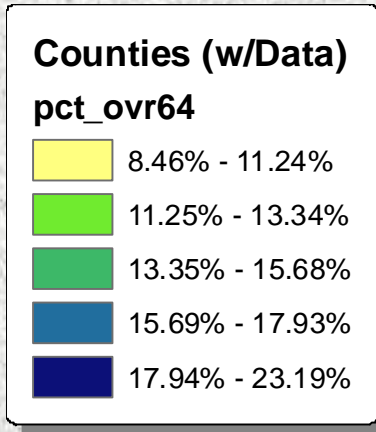
Source: 2000 Census of Population and Housing, SF3



Percent Age 65 & Over

Counties

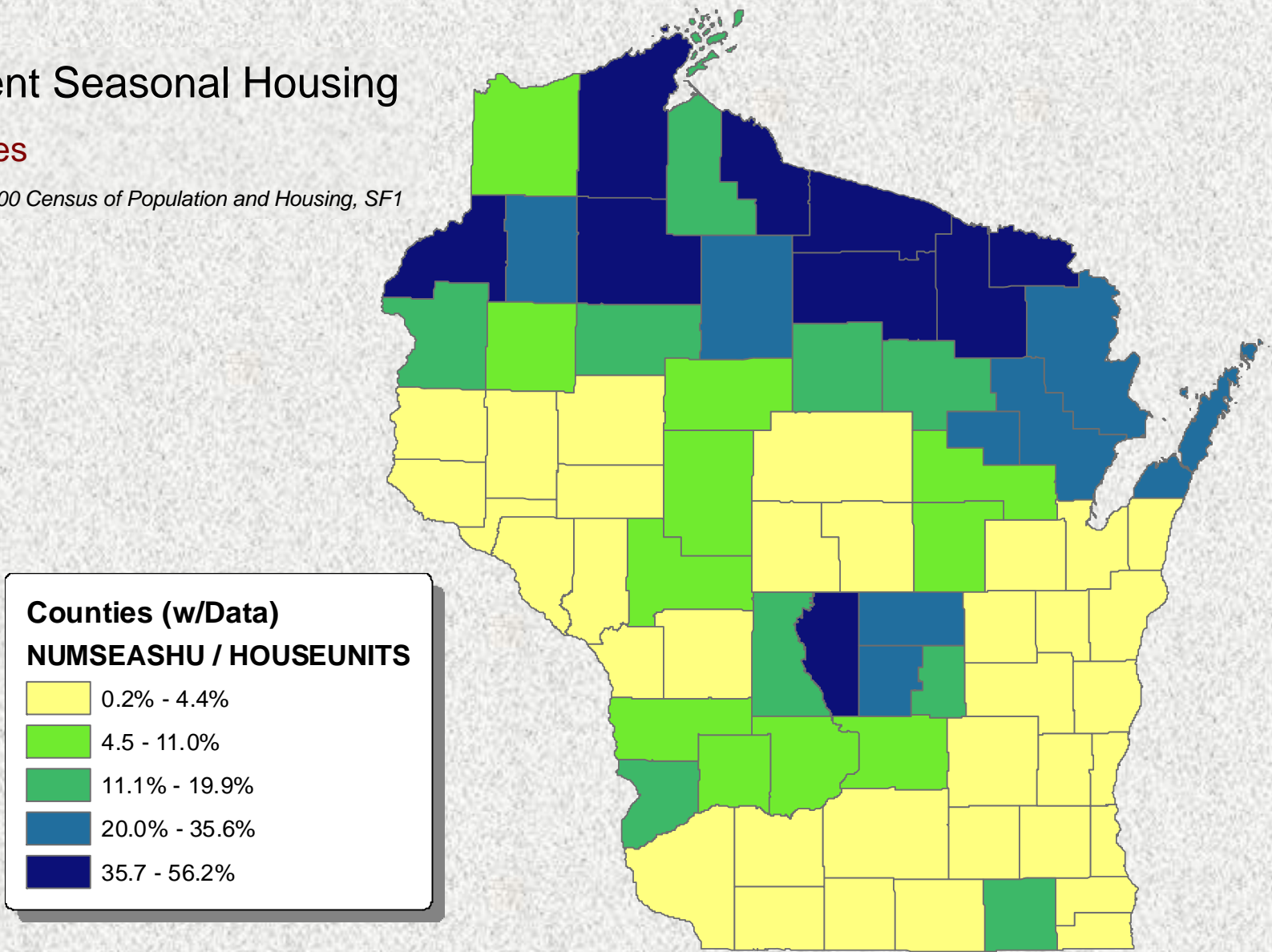
Source: 2000 Census of Population and Housing, SF1



Percent Seasonal Housing

Counties

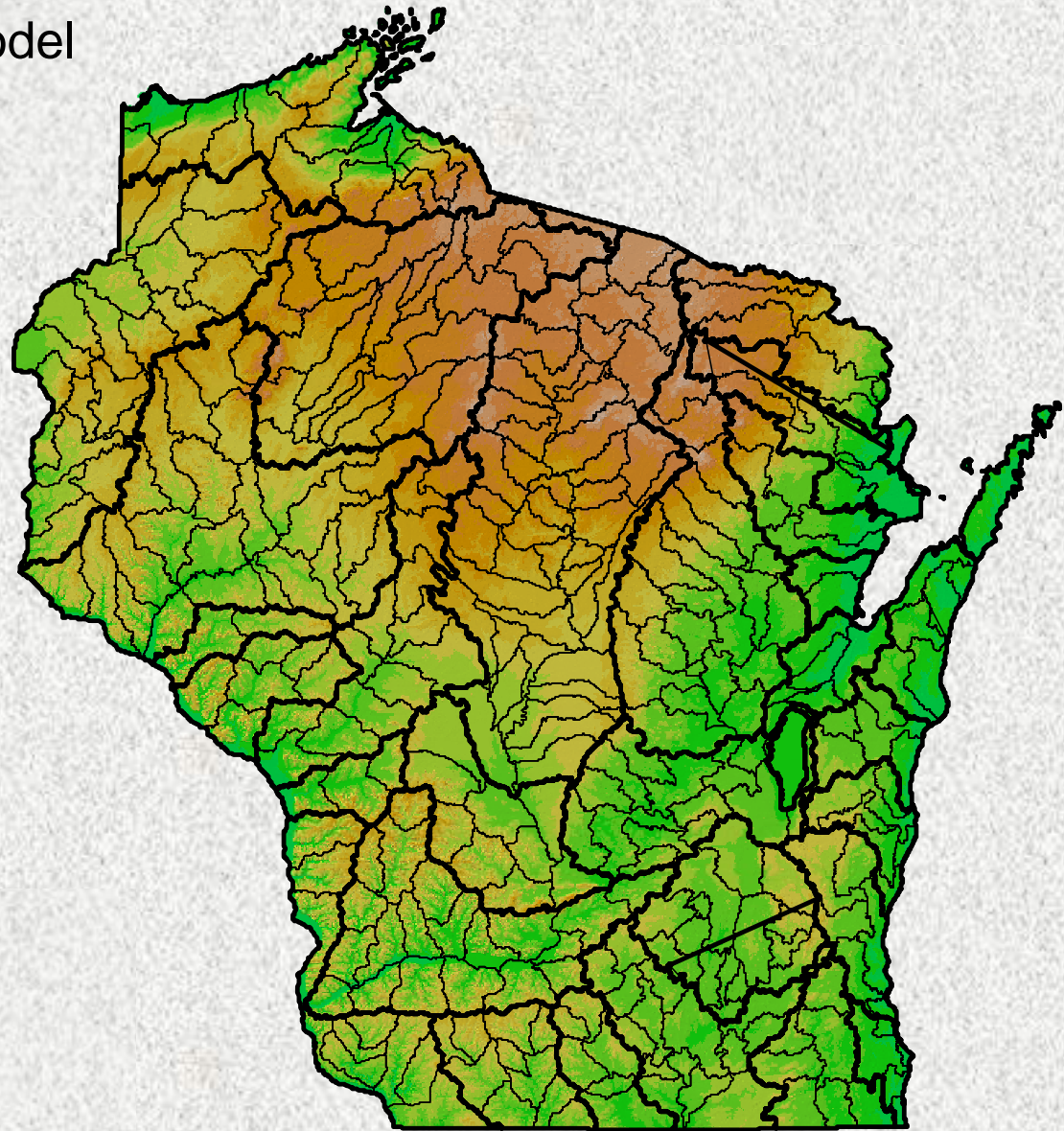
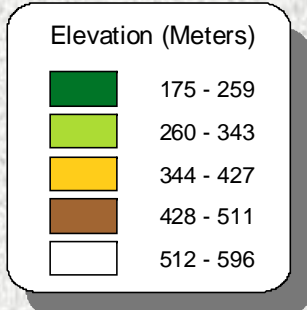
Source: 2000 Census of Population and Housing, SF1



Wisconsin Elevation Model

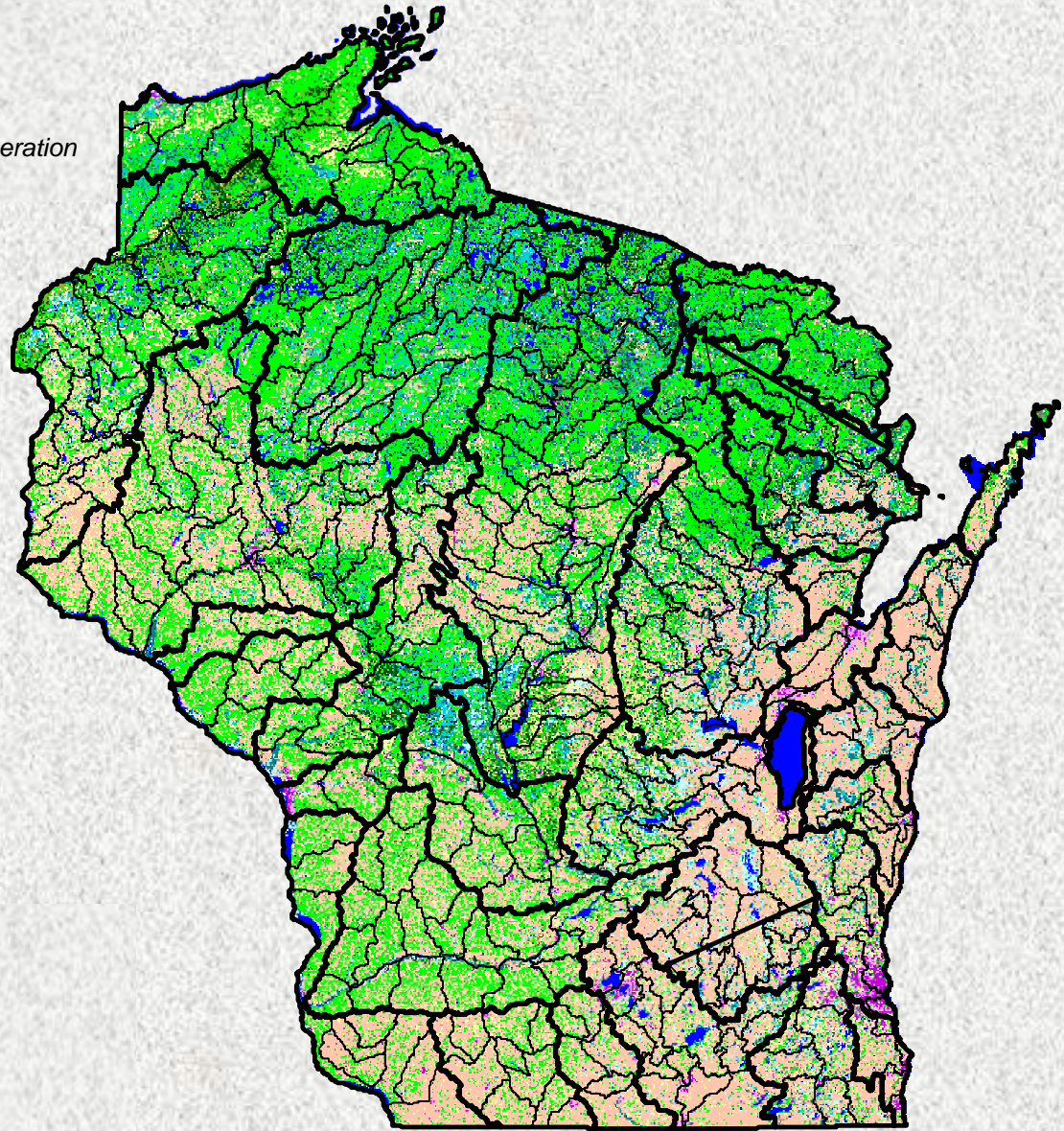
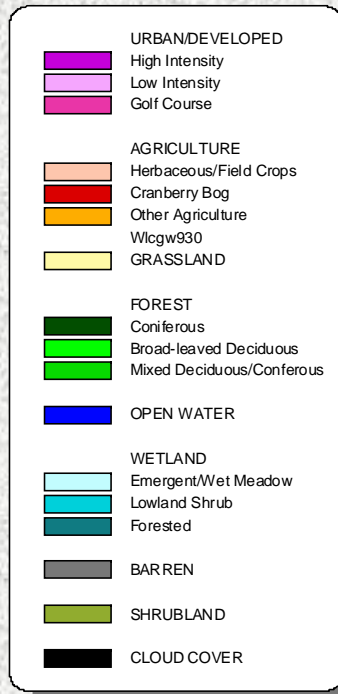
Source: USGS Digital Elevation Model

1 Degree DEM with 75m Cell Size



Wisconsin Land Cover

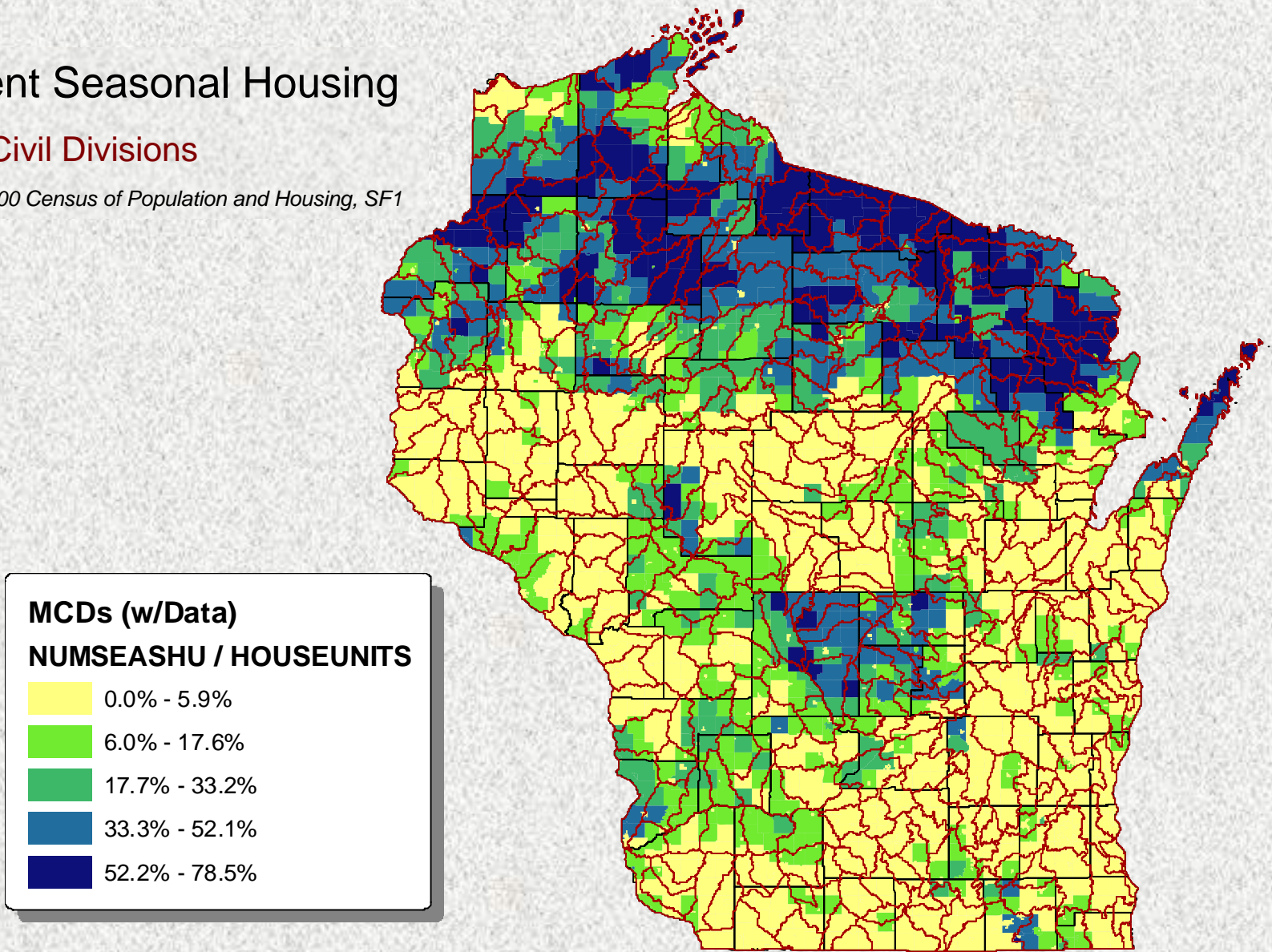
Source: Wisconsin Initiative for Statewide Cooperation on Landscape and Data 1993 (WISCLAND)



Percent Seasonal Housing

Minor Civil Divisions

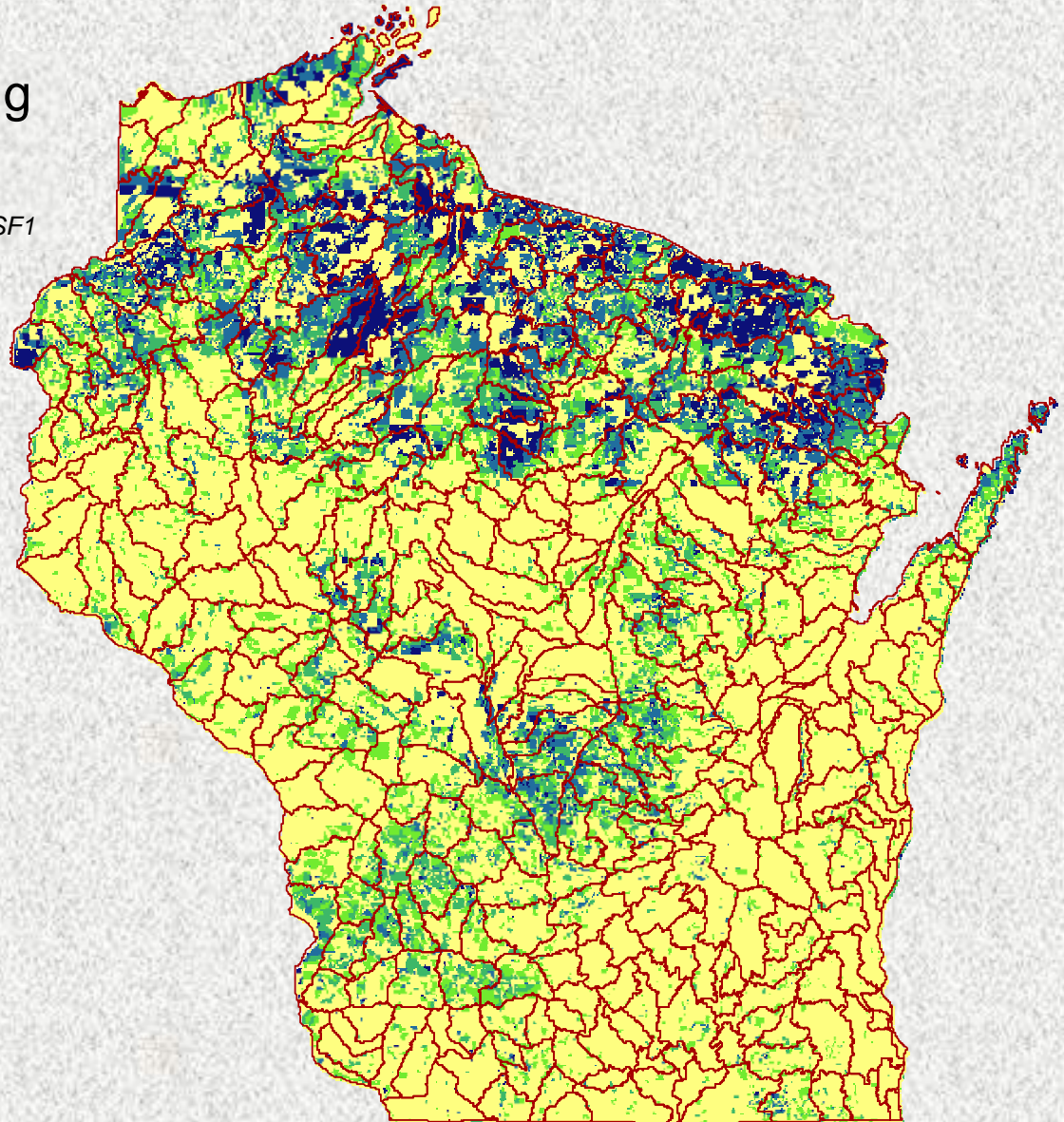
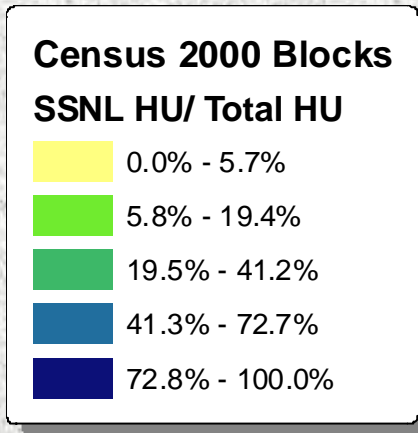
Source: 2000 Census of Population and Housing, SF1



Percent Seasonal Housing

Census Blocks

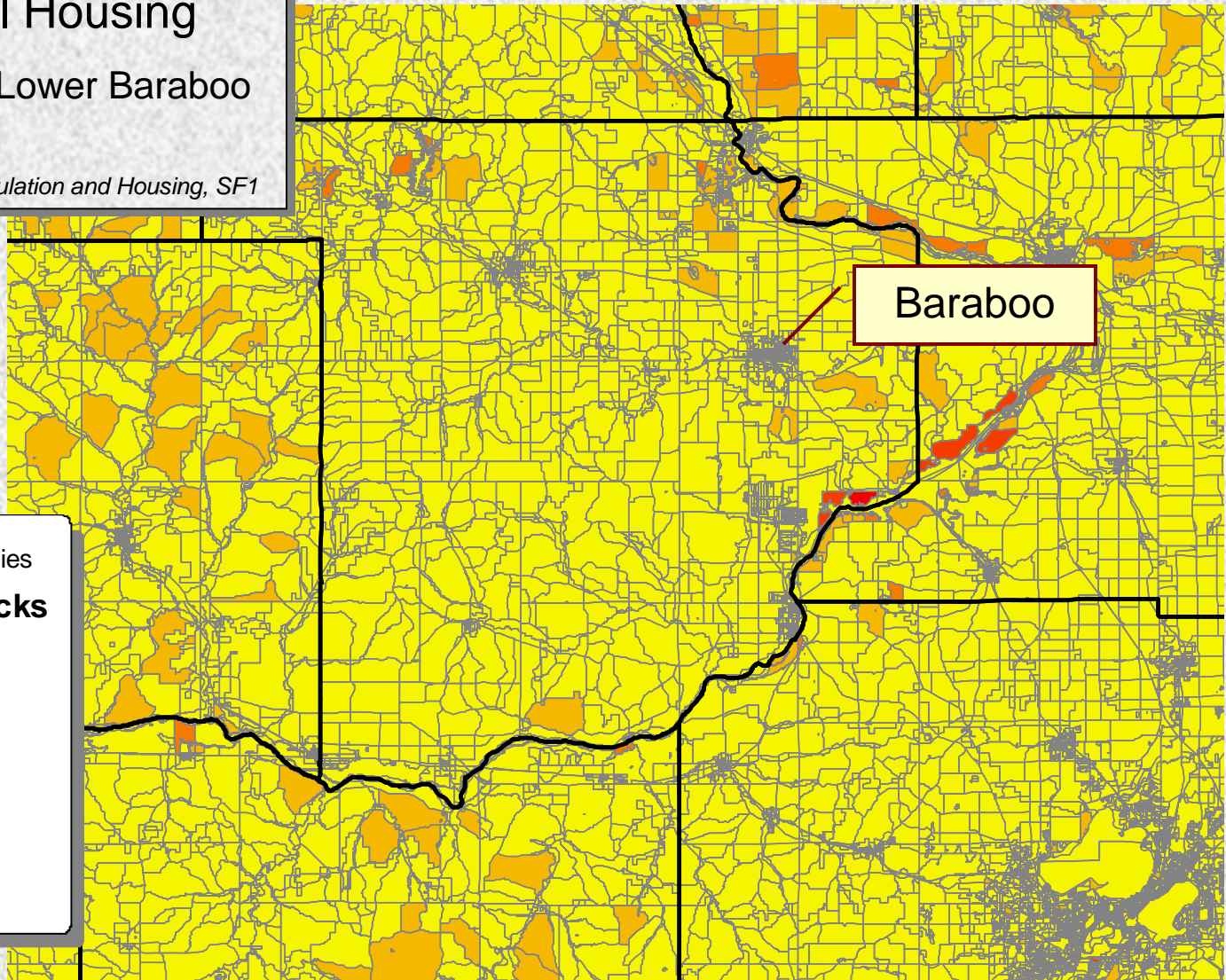
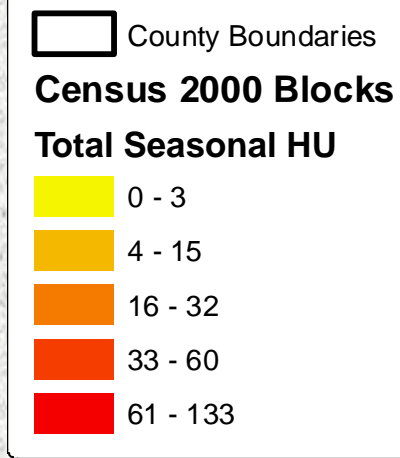
Source: 2000 Census of Population and Housing, SF1



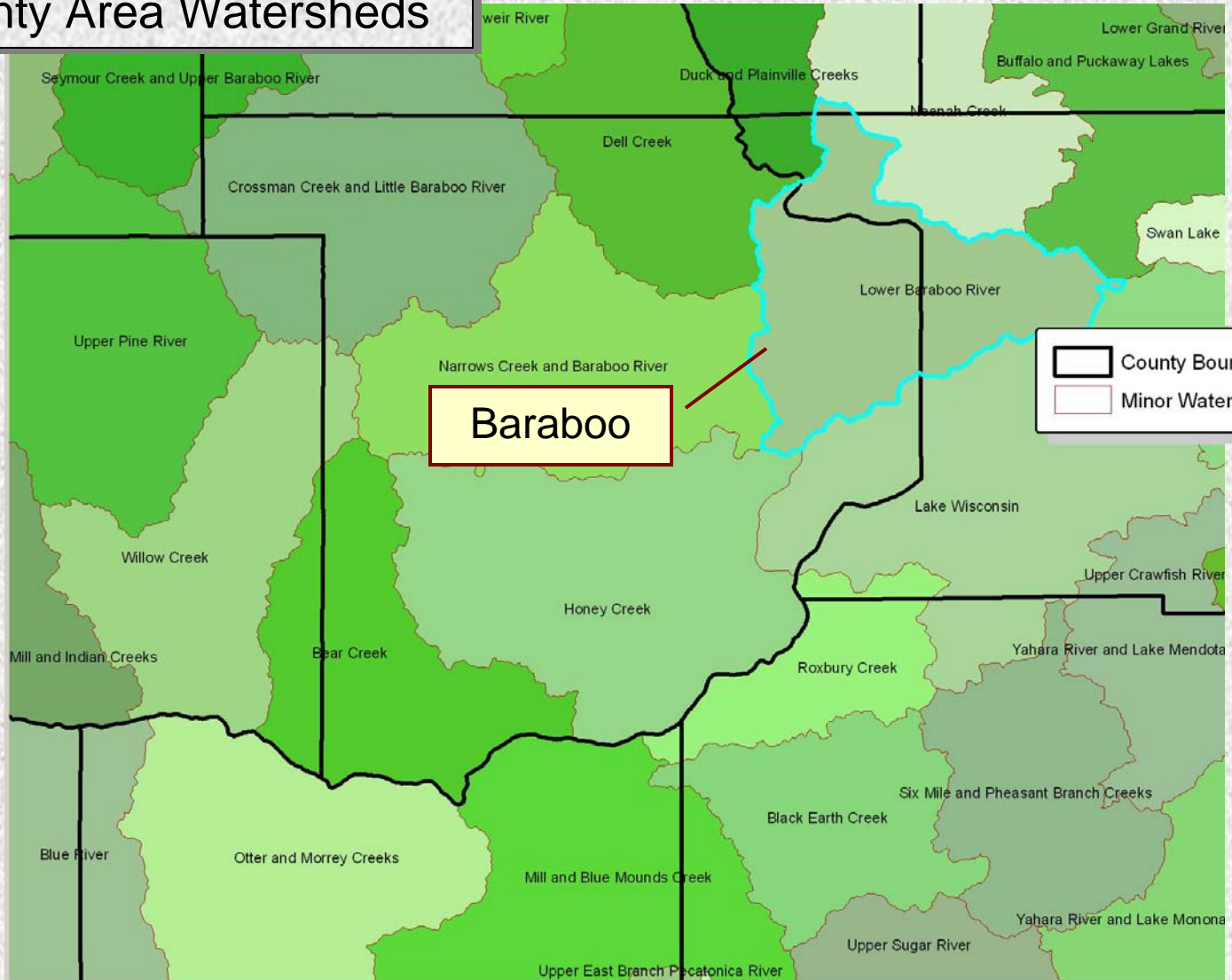
Total Seasonal Housing

Census Blocks in Lower Baraboo River Watershed

Source: 2000 Census of Population and Housing, SF1



Sauk County Area Watersheds



Legend:


- County Boundaries
- Minor Watersheds

Baraboo






Total Seasonal Housing

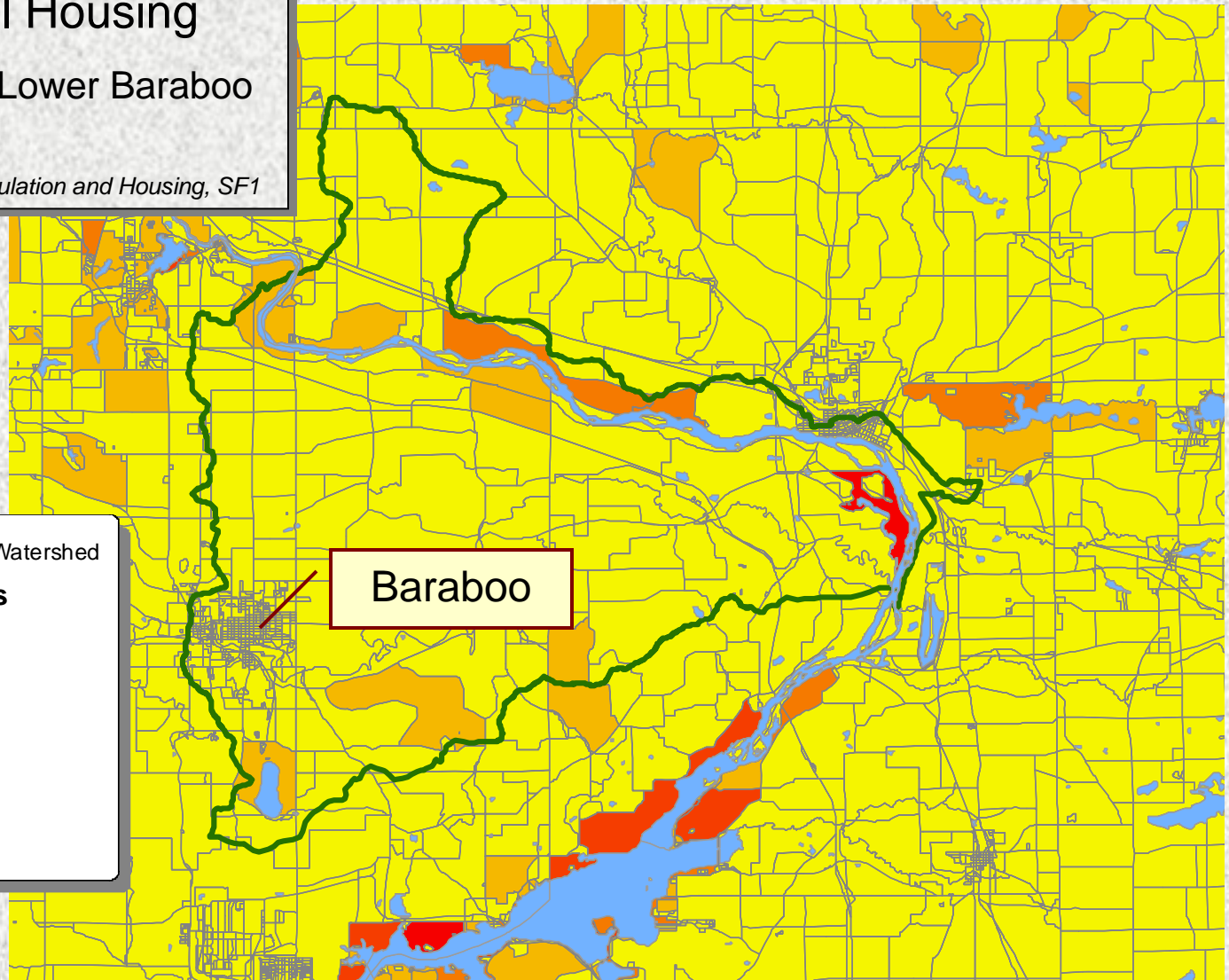
Census Blocks in Lower Baraboo River Watershed

Source: 2000 Census of Population and Housing, SF1

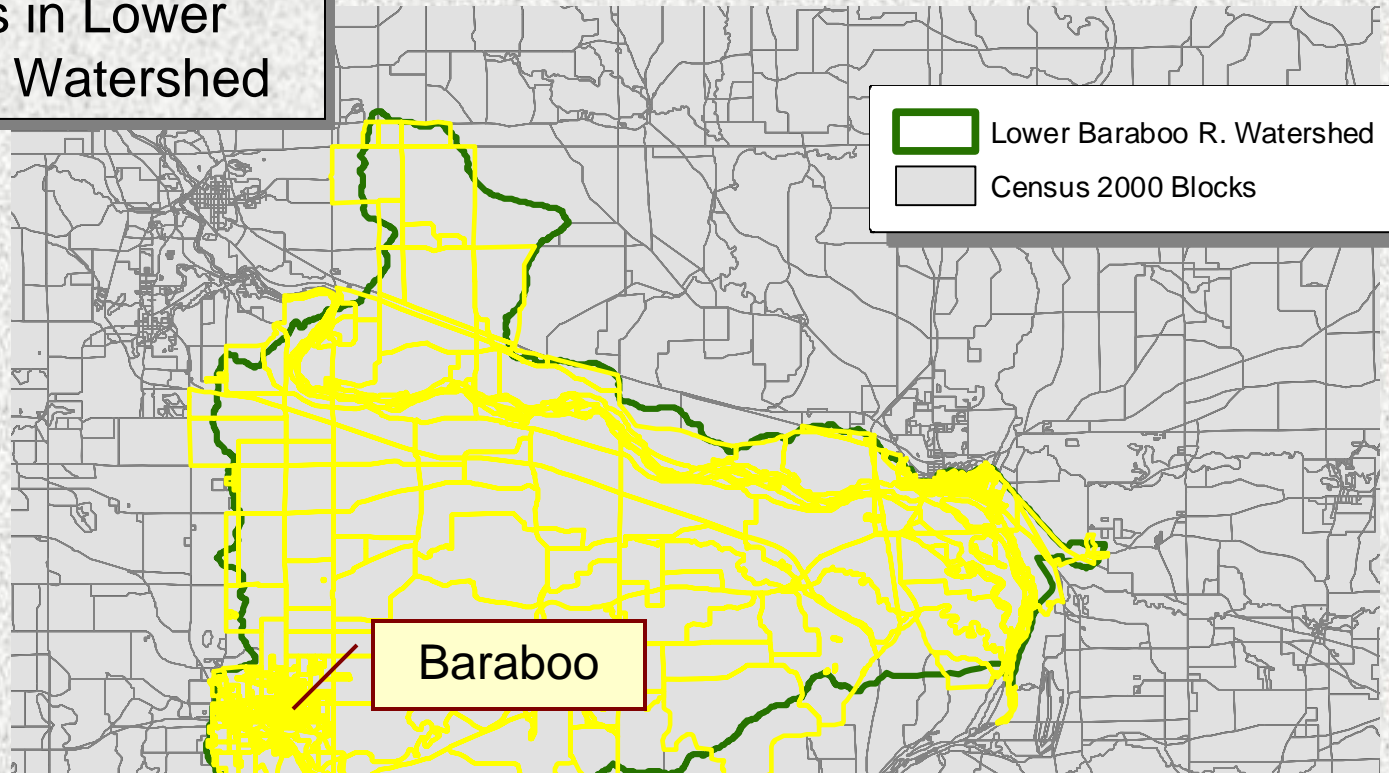
 Lower Baraboo R. Watershed

Census 2000 Blocks
Total Seasonal HU

	0 - 3
	4 - 15
	16 - 32
	33 - 60
	61 - 133



Census Blocks in Lower Baraboo River Watershed



Legend:

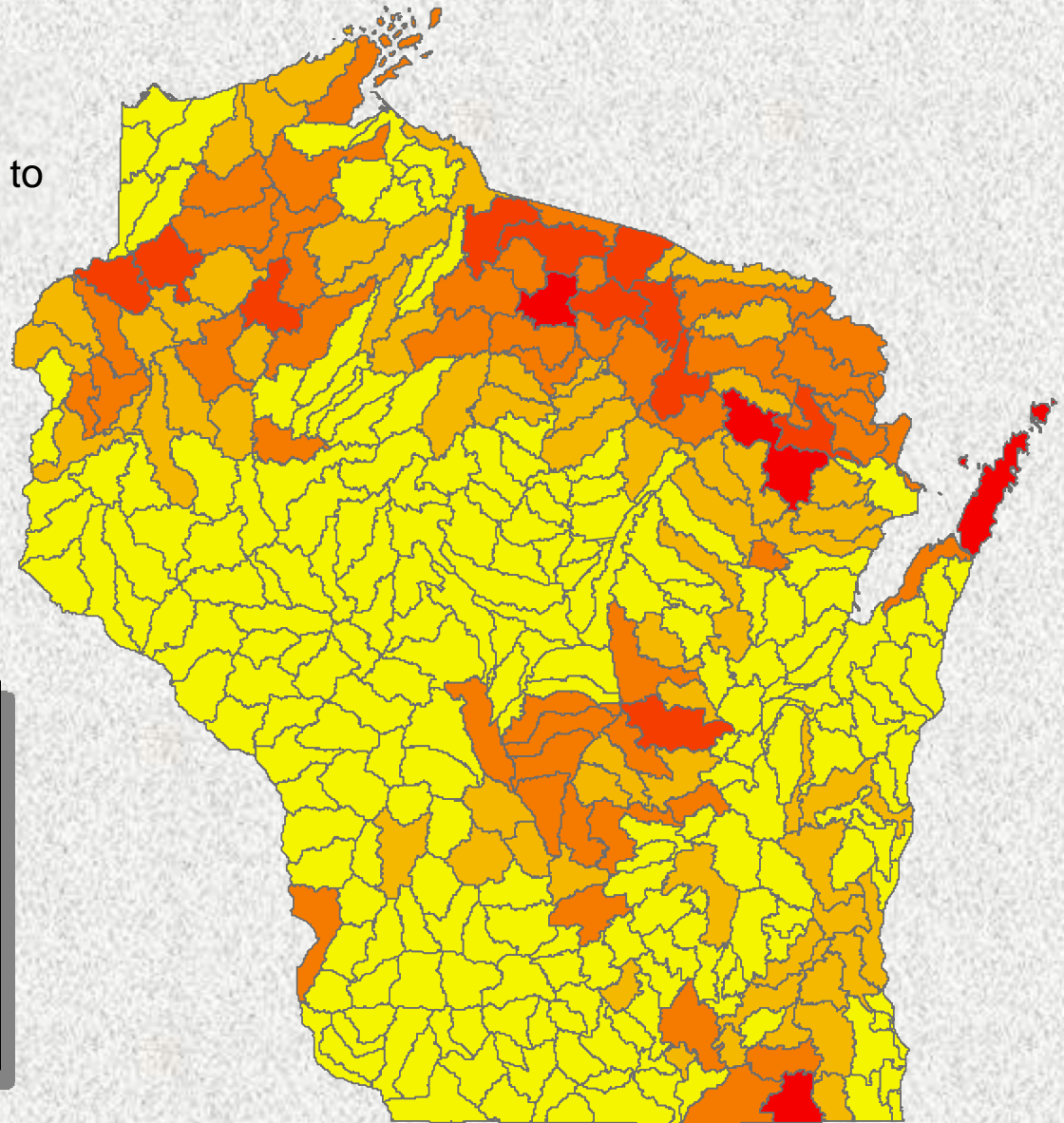
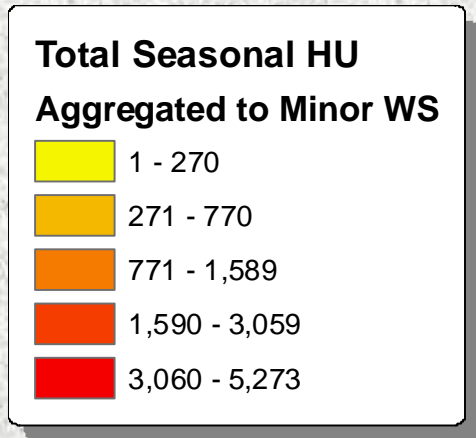
- Lower Baraboo R. Watershed
- Census 2000 Blocks

Attributes of Census 2000 Blocks selection

SF1_blk_extract2.NAME	SF1_blk_extract2.A	SF1_blk_ext	SF1_blk_ex	SF1_blk_ex	SF1_blk_ext	SF1_blk_ext
Block 3053	19234	49	9	18.367347	4.000000	
Block 2040	123067	65	4	6.153846	4.166667	
Block 2055	24502	63	4	6.349206	4.166667	
Block 2021	21304	48	5	10.416667	4.347826	
Block 5037	465062	62	3	4.83871	4.545455	
Block 6026	9968264	209	10	4.784689	4.705882	
Block 2070	36172	58	4	6.896552	4.761905	
Block 4021	17538	37	4	10.810811	4.761905	
Block 1030	7435551	52	3	5.769231	4.761905	
Block 5038	6662760	50	5	10	5.000000	

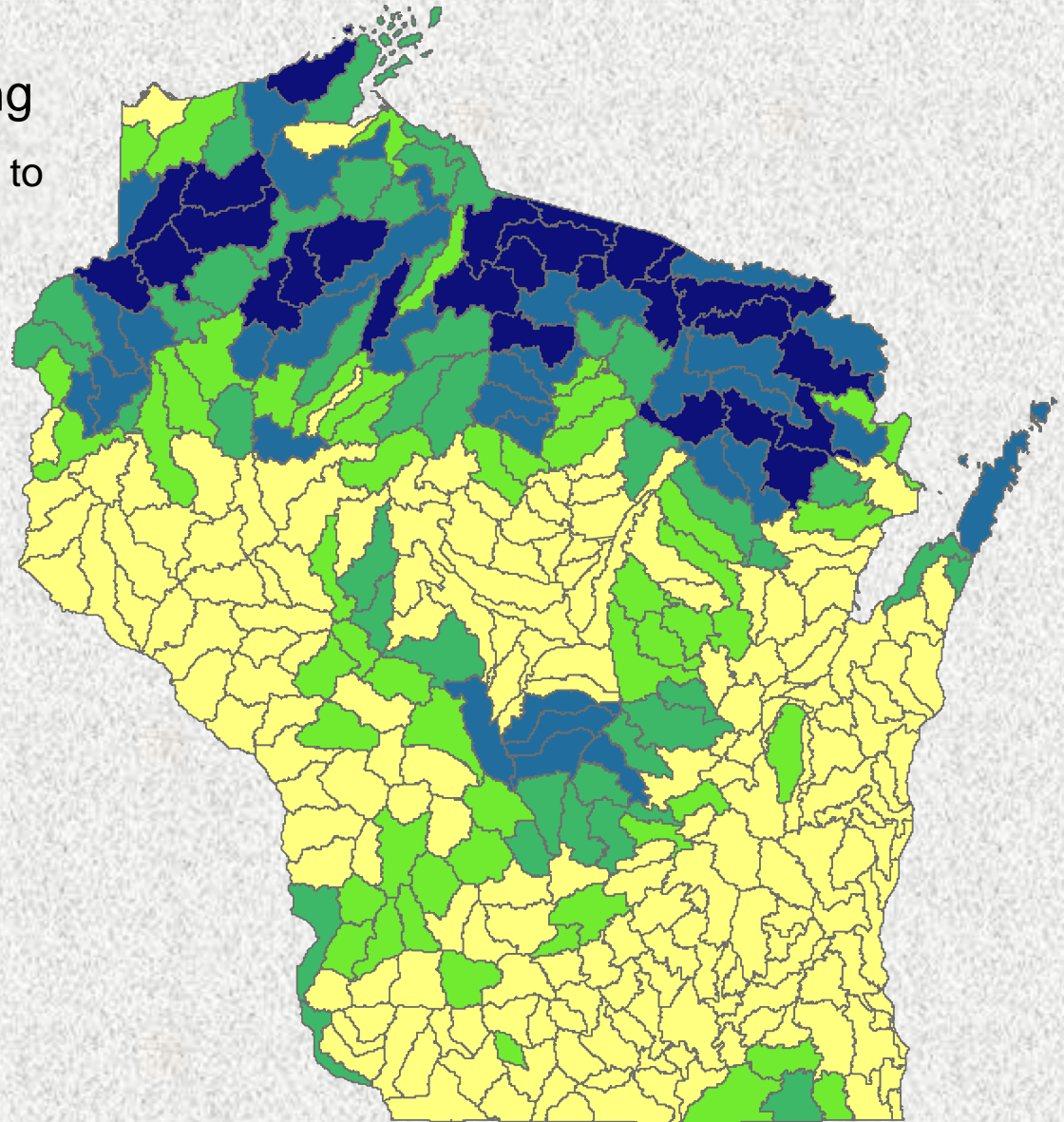
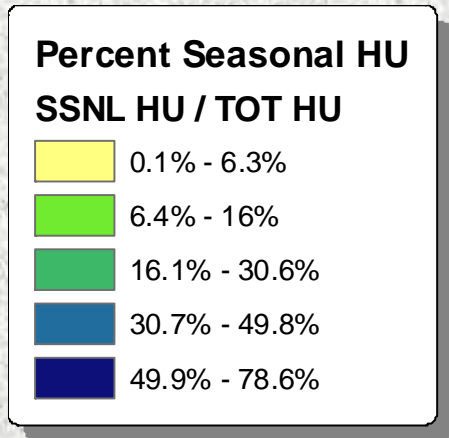
Total Seasonal Housing

Census Block Data Aggregated to
Minor Watersheds



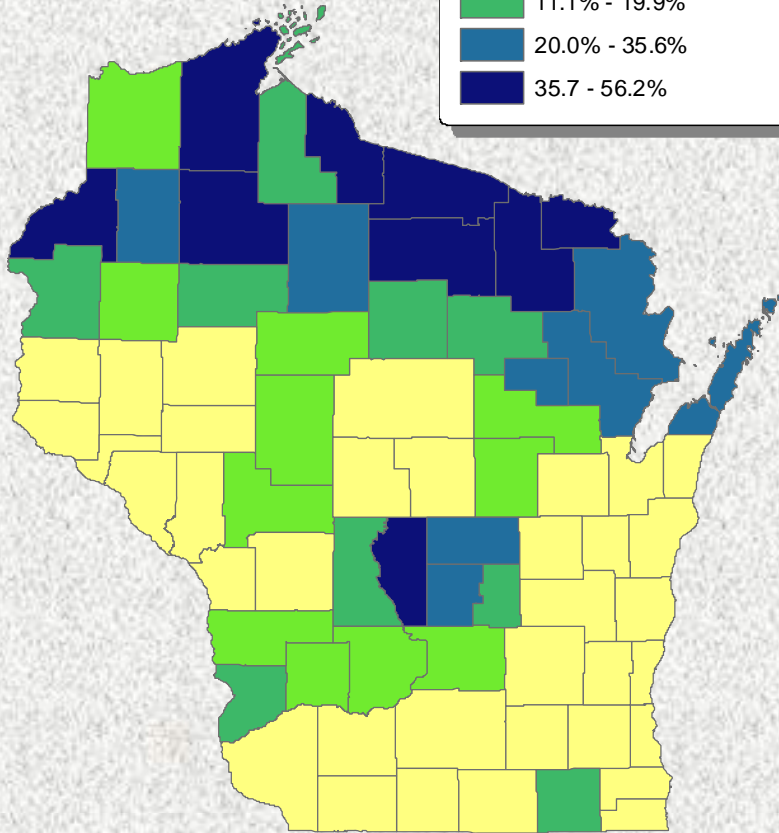
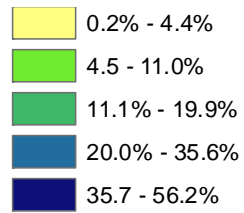
Percent Seasonal Housing

Census Block Data Aggregated to
Minor Watersheds

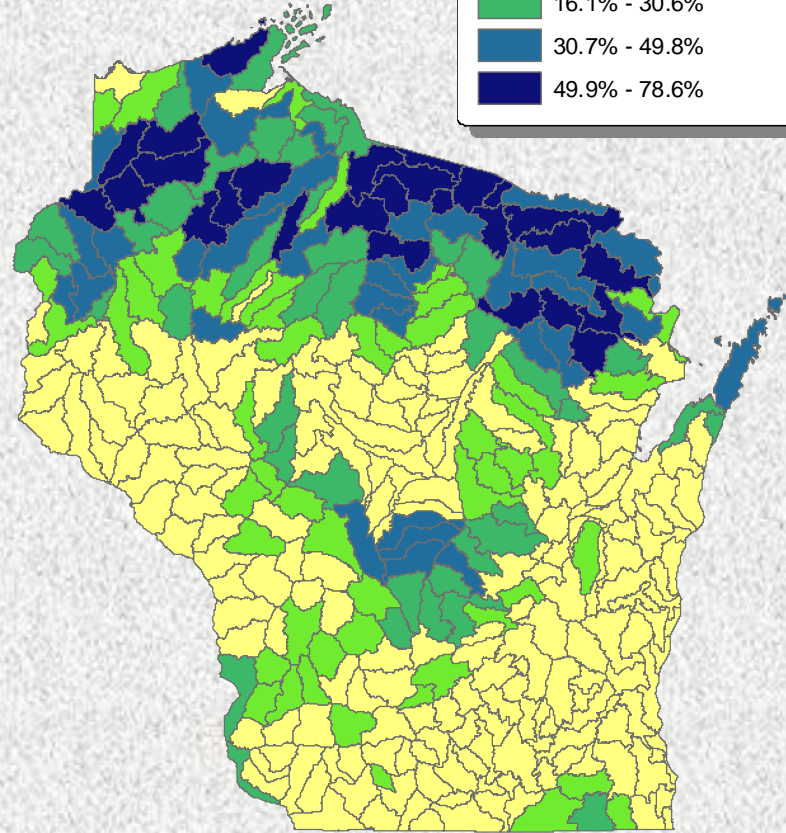
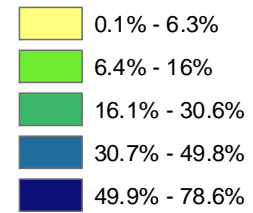


Percent Seasonal Housing

Counties

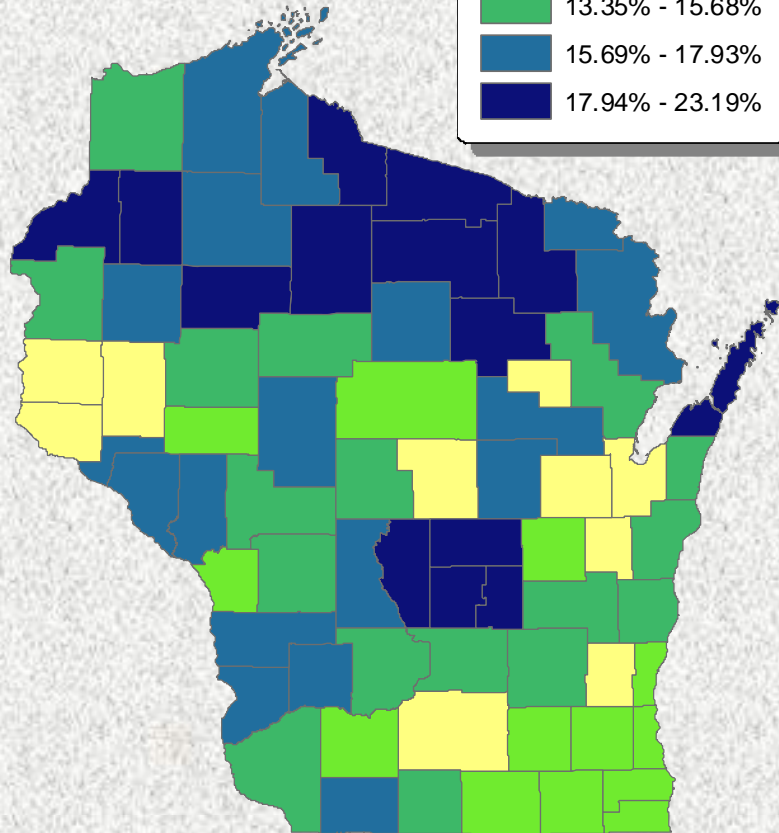
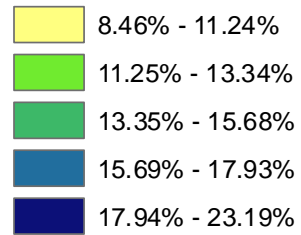


Watersheds

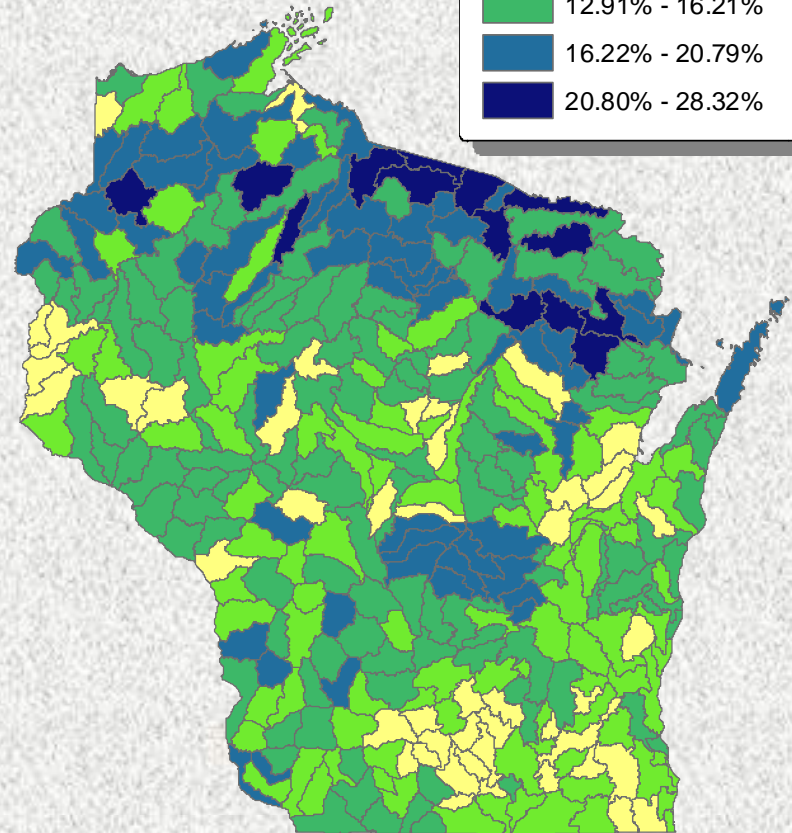
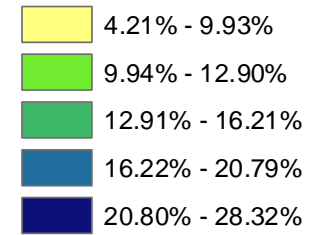


Percent Age 65 & Over

Counties



Watersheds



Applied Population Laboratory (APL)

- **Dan Veroff**, Director (dlveroff@ssc.wisc.edu)
General Inquiries
- **Jim Beaudoin**, Information Processing Consultant
(jmbeaudoin@ssc.wisc.edu)
GetFacts
- **Dave Long**, Associate Researcher (dlong@ssc.wisc.edu)
Watershed Overlays