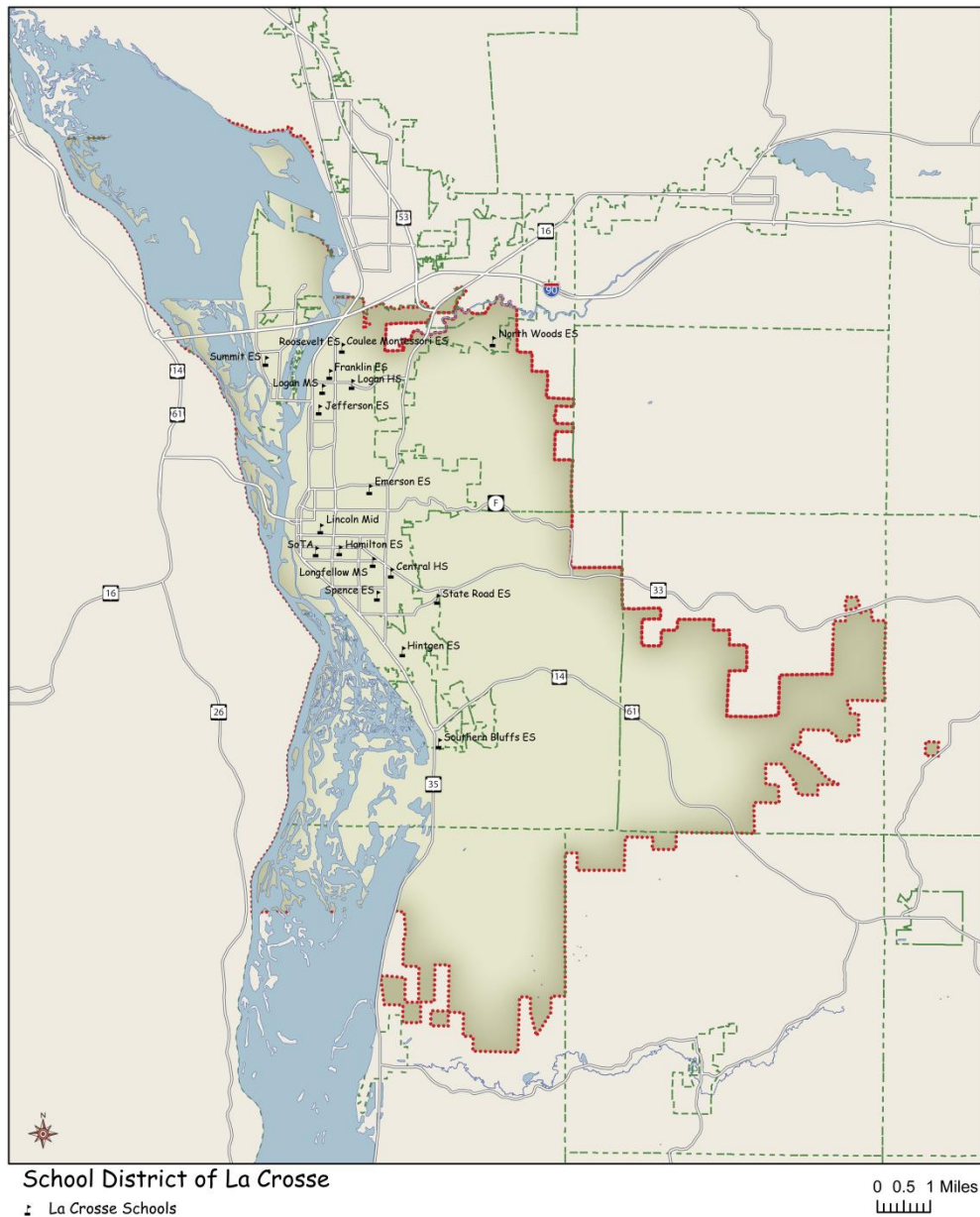


Planning for the Schools of Tomorrow



School Enrollment Projections Series

School District of La Crosse

May 2013

Page Intentionally Left Blank



Table of Contents

| | |
|---------------------------------------|----|
| Introduction | 1 |
| District Enrollment History | 1 |
| Kindergarten Enrollment Trends | 6 |
| Birth Trends..... | 7 |
| Population Trends..... | 8 |
| Housing Trends | 14 |
| Method | 28 |
| School Enrollment Projections..... | 31 |
| Baseline Projections | 31 |
| 5 Year Trend Projections | 32 |
| 2 Year “Trend” Projections..... | 33 |
| Comparison of Projection Models | 34 |
| Conclusions | 39 |
| Appendix A..... | 40 |



Page Intentionally Left Blank



Introduction

This report offers a summary of the Enrollment Projection Analysis completed for the School District of La Crosse by the Applied Population Laboratory (APL), University of Wisconsin-Madison. Projections (2013/2022) are provided for the district as a whole, and individually for each grade and grade grouping. The projection process uses a combination of historical enrollment data, birth trends and projections, housing information, and population trends to create reasonable assumptions about future growth scenarios and the likely impact on the school district.

District Enrollment History

Figure 1-A and Tables 1 and 2 display the last ten years of enrollment history in the School District of La Crosse. The district enrollment history includes resident students attending La Crosse schools and open enrollment "in" students from other districts. 4K-12 enrollment has decreased by 751 students since 2003/04, or a 10% decrease over the last ten years.

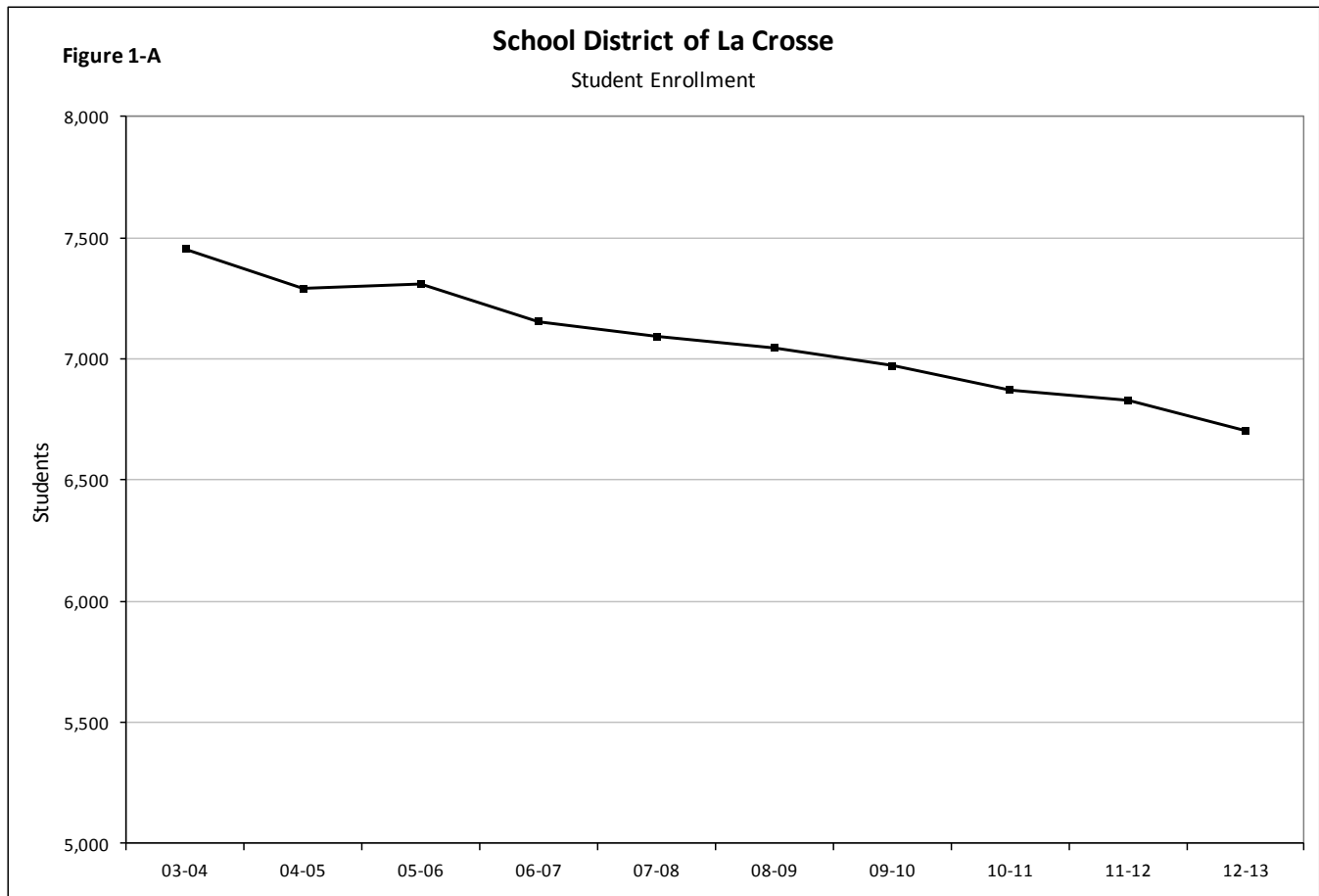


TABLE 1
Student Enrollment
School District of La Crosse

| | SCHOOL YEAR | | | | | | | | | |
|--------------|--------------|--------------|--------------|--------------|--------------|--------------|--------------|--------------|--------------|--------------|
| | 03-04 | 04-05 | 05-06 | 06-07 | 07-08 | 08-09 | 09-10 | 10-11 | 11-12 | 12-13 |
| 4K | 332 | 331 | 392 | 357 | 409 | 419 | 422 | 429 | 478 | 448 |
| K | 502 | 458 | 455 | 526 | 465 | 503 | 533 | 485 | 498 | 547 |
| 1 | 478 | 477 | 475 | 433 | 506 | 455 | 506 | 502 | 483 | 473 |
| 2 | 503 | 464 | 459 | 445 | 433 | 518 | 452 | 496 | 491 | 483 |
| 3 | 441 | 511 | 475 | 443 | 463 | 431 | 510 | 452 | 496 | 468 |
| 4 | 495 | 421 | 517 | 473 | 442 | 473 | 432 | 503 | 442 | 504 |
| 5 | 552 | 503 | 427 | 498 | 479 | 442 | 475 | 424 | 493 | 429 |
| 6 | 515 | 548 | 528 | 446 | 508 | 477 | 432 | 470 | 427 | 484 |
| 7 | 571 | 536 | 572 | 529 | 458 | 514 | 477 | 441 | 472 | 427 |
| 8 | 550 | 574 | 547 | 572 | 537 | 462 | 502 | 492 | 449 | 465 |
| 9 | 630 | 579 | 611 | 578 | 590 | 560 | 485 | 548 | 493 | 457 |
| 10 | 612 | 636 | 572 | 619 | 582 | 575 | 557 | 494 | 541 | 493 |
| 11 | 596 | 615 | 644 | 587 | 613 | 584 | 588 | 542 | 475 | 522 |
| 12 | 677 | 636 | 635 | 649 | 608 | 633 | 600 | 594 | 590 | 503 |
| TOTAL | 7,454 | 7,289 | 7,309 | 7,155 | 7,093 | 7,046 | 6,971 | 6,872 | 6,828 | 6,703 |
| K-12 | 7,122 | 6,958 | 6,917 | 6,798 | 6,684 | 6,627 | 6,549 | 6,443 | 6,350 | 6,255 |
| K-5 | 2,971 | 2,834 | 2,808 | 2,818 | 2,788 | 2,822 | 2,908 | 2,862 | 2,903 | 2,904 |
| 6-8 | 1,636 | 1,658 | 1,647 | 1,547 | 1,503 | 1,453 | 1,411 | 1,403 | 1,348 | 1,376 |
| 9-12 | 2,515 | 2,466 | 2,462 | 2,433 | 2,393 | 2,352 | 2,230 | 2,178 | 2,099 | 1,975 |

TABLE 2
Student Enrollment Changes
School District of La Crosse

| GRADE | ABSOLUTE CHANGE | | | PERCENT CHANGE | | | AVERAGE ANNUAL PERCENT CHANGE | | |
|--------------|-----------------|-------------|-------------|----------------|-------------|-------------|-------------------------------|-------------|-------------|
| | '03 to '12 | '03 to '07 | '08 to '12 | '03 to '12 | '03 to '07 | '08 to '12 | '03 to '12 | '03 to '07 | '08 to '12 |
| 4K | 116 | 77 | 29 | 34.9 | 23.2 | 6.9 | 3.9 | 5.8 | 1.7 |
| K | 45 | -37 | 44 | 9.0 | -7.4 | 8.7 | 1.0 | -1.8 | 2.2 |
| 1 | -5 | 28 | 18 | -1.0 | 5.9 | 4.0 | -0.1 | 1.5 | 1.0 |
| 2 | -20 | -70 | -35 | -4.0 | -13.9 | -6.8 | -0.4 | -3.5 | -1.7 |
| 3 | 27 | 22 | 37 | 6.1 | 5.0 | 8.6 | 0.7 | 1.2 | 2.1 |
| 4 | 9 | -53 | 31 | 1.8 | -10.7 | 6.6 | 0.2 | -2.7 | 1.6 |
| 5 | -123 | -73 | -13 | -22.3 | -13.2 | -2.9 | -2.5 | -3.3 | -0.7 |
| 6 | -31 | -7 | 7 | -6.0 | -1.4 | 1.5 | -0.7 | -0.3 | 0.4 |
| 7 | -144 | -113 | -87 | -25.2 | -19.8 | -16.9 | -2.8 | -4.9 | -4.2 |
| 8 | -85 | -13 | 3 | -15.5 | -2.4 | 0.6 | -1.7 | -0.6 | 0.2 |
| 9 | -173 | -40 | -103 | -27.5 | -6.3 | -18.4 | -3.1 | -1.6 | -4.6 |
| 10 | -119 | -30 | -82 | -19.4 | -4.9 | -14.3 | -2.2 | -1.2 | -3.6 |
| 11 | -74 | 17 | -62 | -12.4 | 2.9 | -10.6 | -1.4 | 0.7 | -2.7 |
| 12 | -174 | -69 | -130 | -25.7 | -10.2 | -20.5 | -2.9 | -2.5 | -5.1 |
| TOTAL | -751 | -361 | -343 | -10.1 | -4.8 | -4.9 | -1.1 | -1.2 | -1.2 |
| K-12 | -867 | -438 | -372 | -12.2 | -6.1 | -5.6 | -1.4 | -1.5 | -1.4 |
| K-5 | -67 | -183 | 82 | -2.3 | -6.2 | 2.9 | -0.3 | -1.5 | 0.7 |
| 6-8 | -260 | -133 | -77 | -15.9 | -8.1 | -5.3 | -1.8 | -2.0 | -1.3 |
| 9-12 | -540 | -122 | -377 | -21.5 | -4.9 | -16.0 | -2.4 | -1.2 | -4.0 |



Figure 1-B shows enrollment history broken down by grade groupings (4K, K-5, 6-8, and 9-12). 4K enrollment has increased by 4% annually over the last ten years. Grades K-5 enrollment decreased by -0.3% annually in the last ten years, but increased slightly by 0.7% annually over the last five years. Grades 6-8 enrollment declined by -1.8% annually, while grades 9-12 enrollment decreased the most by -2.4% annually over the last ten years.

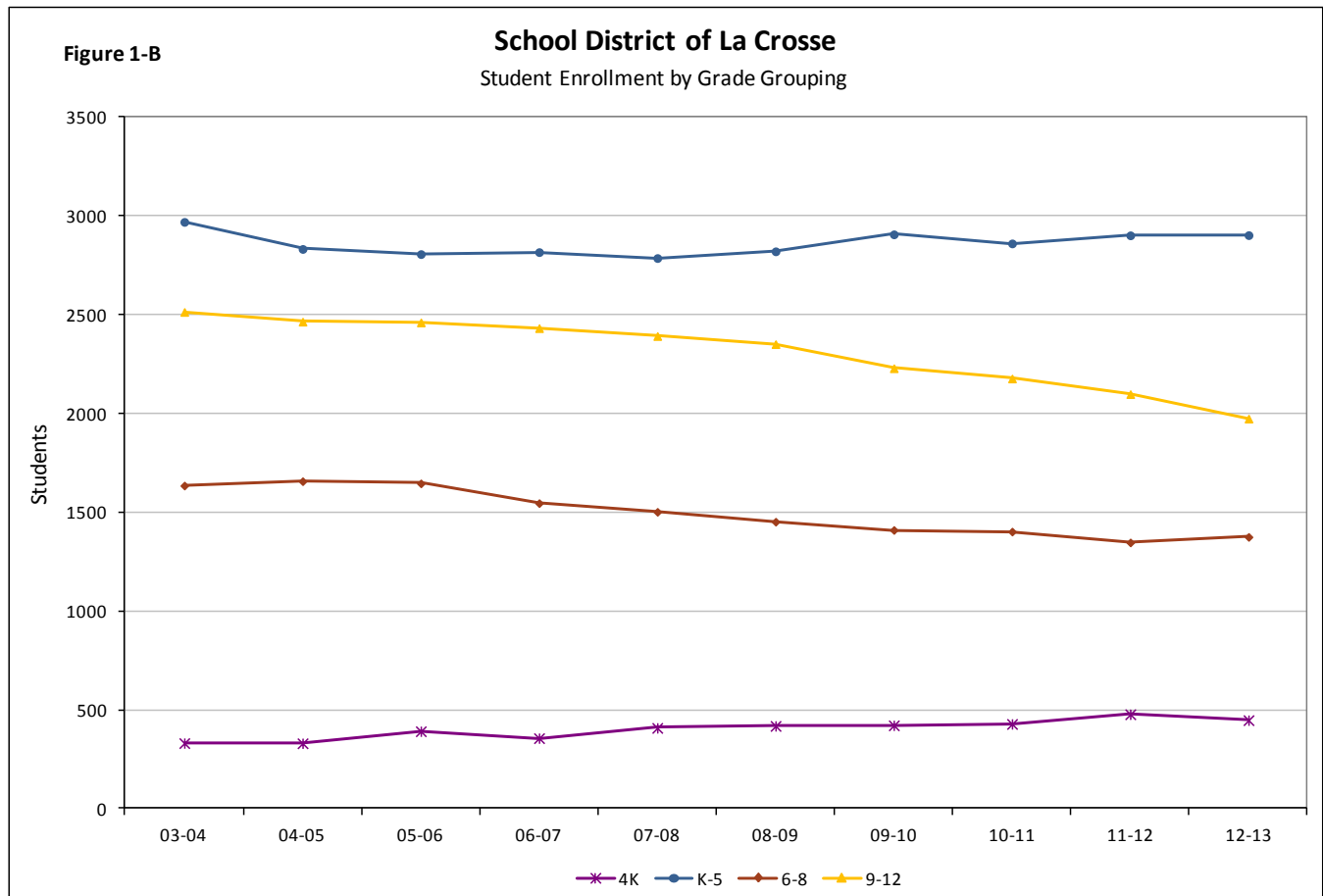
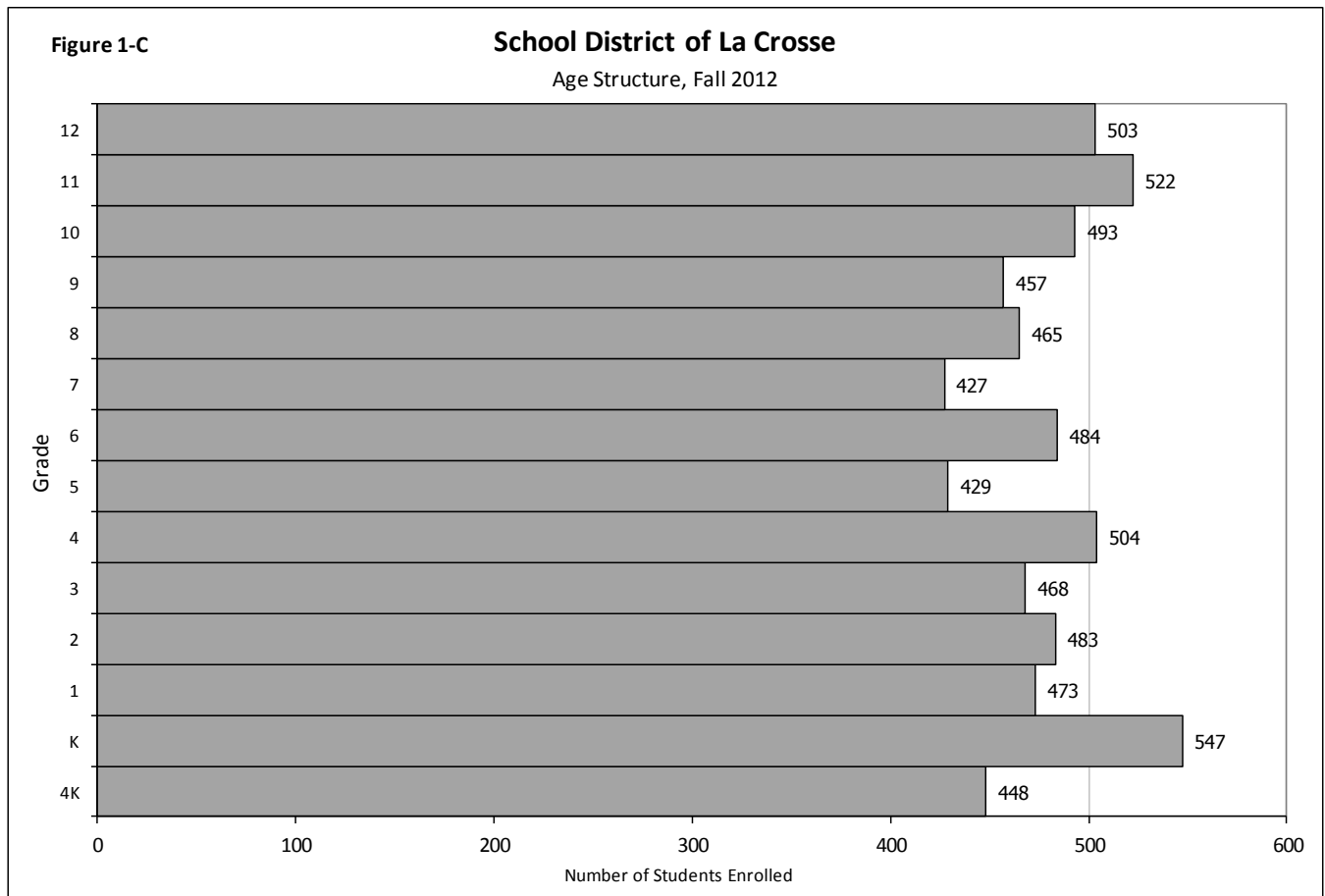
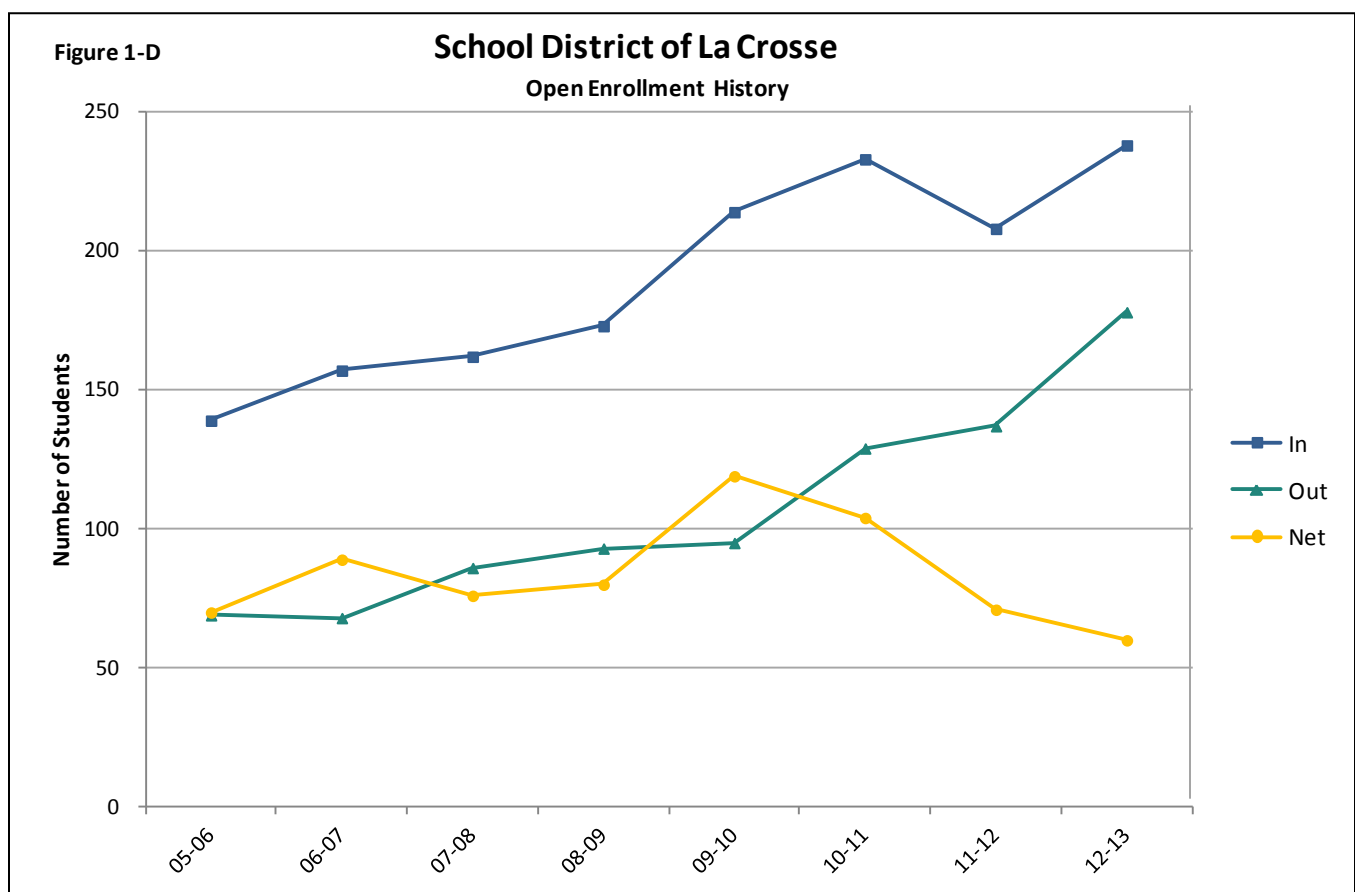


Figure 1-C shows the age structure in fall 2012 of the student population with the number of 4K students at the bottom and the number of 12th graders at the top. The greatest number of students are in kindergarten and 11th grades, while 5th and 7th grades contain the fewest number of students.



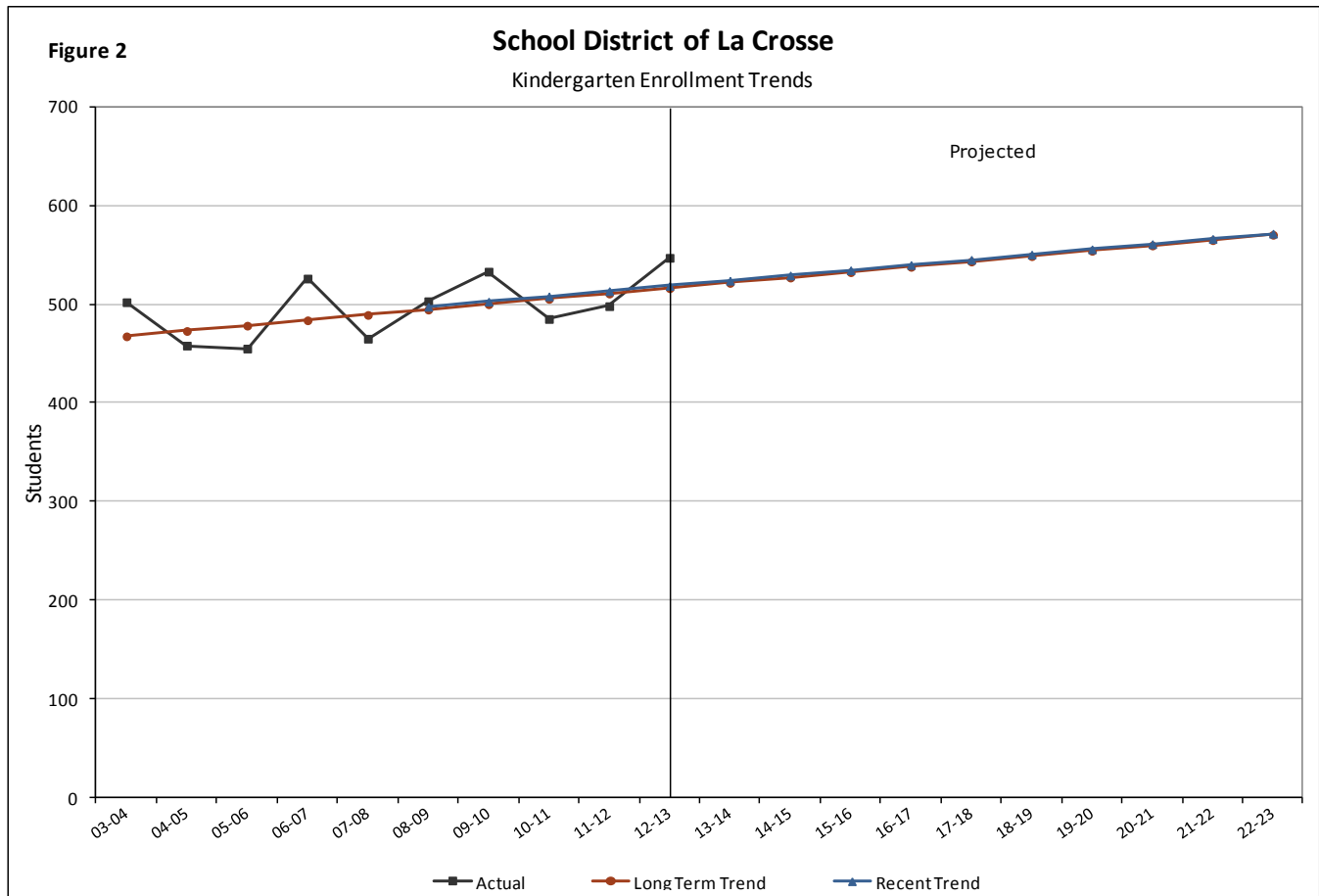
The open enrollment program permits children to attend school in a district other than where they live. Since, the 1998/1999 school year, the Wisconsin Department of Public Instruction (DPI) has offered families this choice, and it has become increasingly popular. Due to the uncertainty of families' decisions to utilize the open enrollment program it remains difficult to project future trends in open enrollment.

Figure 1-D breaks down open enrollment into those who live in another school district, but attend La Crosse schools (Enrollment IN) and those who live in the School District of La Crosse, but attend school elsewhere (Enrollment OUT). The figure also shows the net open enrollment in the district over this eight year period. Between 2005/06 and 2012/13, the school district has always had more open enrollment IN students than open enrollment OUT students with both increasing over time.



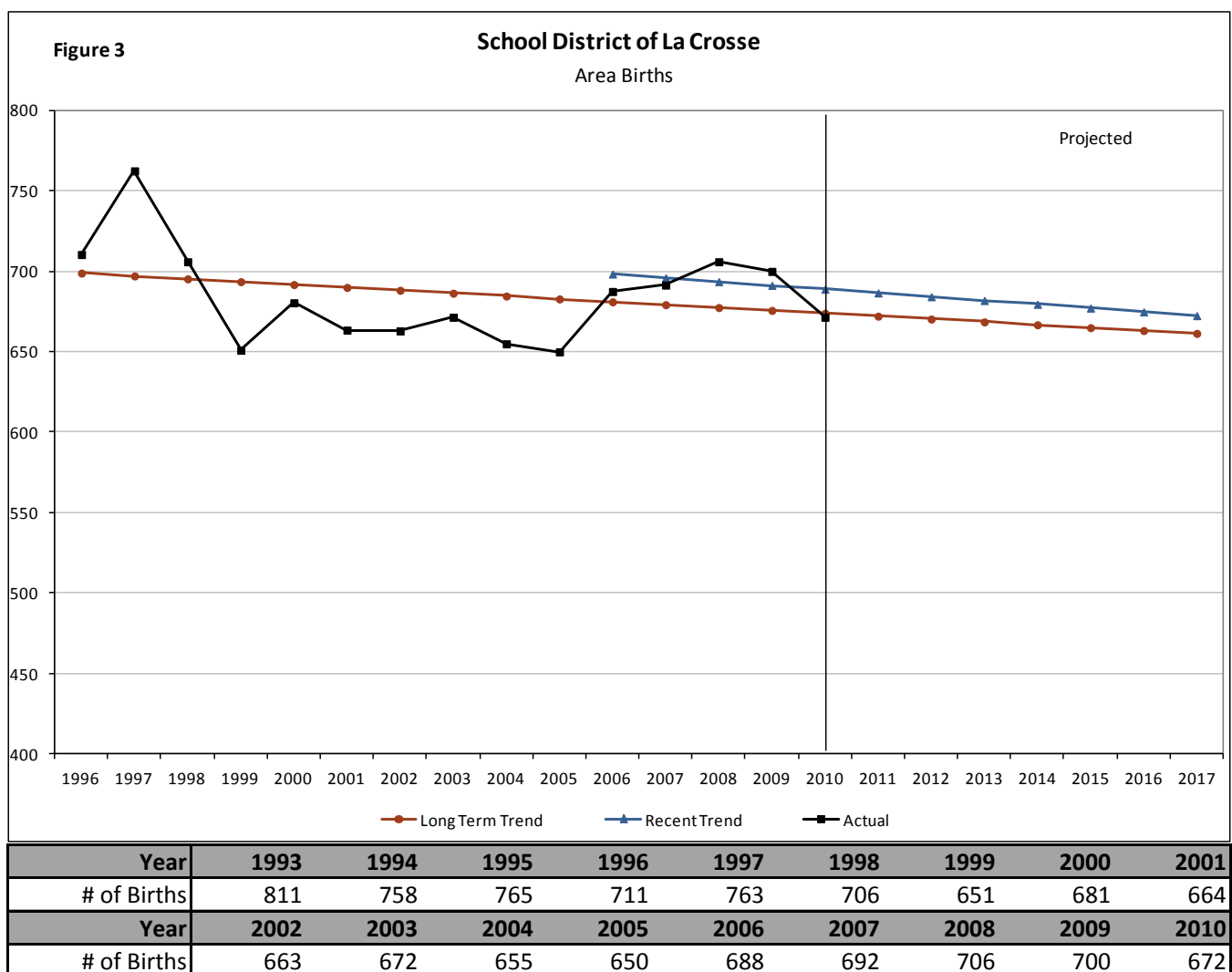
Kindergarten Enrollment Trends

Examining trends in kindergarten enrollment is particularly informative for gaining perspective on future district enrollment, as today’s kindergartners will gradually make up tomorrow’s students at the higher grade levels as they age and move through the school system. Figure 2 shows kindergarten enrollment history and trend lines depicting future enrollment trends. The “Long Term Trend” line (shown in red) averages enrollment changes between 2003/02 and 2012/13. The “Recent Trend” line emphasizes enrollment changes over the last five years. In the School District of La Crosse, the long term and recent trends indicate increasing enrollment for kindergarten.



Birth Trends

We use historical and projected birth data to forecast the number of kindergarten students who will enroll in the School District of La Crosse in future years. Figure 3 shows (in black) the number of births to mothers living in the City of La Crosse, towns of Bergen, Campbell, Shelby and Medary and half of the Town of Greenfield, by year, from 1996-2010, as collected from the Wisconsin Department of Health Services. We extrapolate these birth trends into the future to correspond with our Baseline and Recent Trend projection models, using the grade progression ratios to convert births into future kindergarteners. The red line represents birth trends over the long term and the blue line examines birth patterns for the last five years. Both trends show decreasing births over time.



Source: WI Department of Health Services



Population Trends

This section examines population trends in the municipalities that are within the School District of La Crosse. Changes in the total population of the district area, particularly when examined by age, provide clues into how the school age population may be changing. Table 3 and Figures 4-A and 4-B provides U. S. Census population totals and the Department of Administration estimates. The School District of La Crosse's population totals can be compared with populations of La Crosse County and the State of Wisconsin. The district area has seen very little population growth from 2000 to 2010 except in the Town of Greenfield which grew by almost 4%.

TABLE 3
Total Population by Municipality: 1990-2012
School District of La Crosse

| Municipality | POPULATION | | | | | | |
|---------------------------|----------------|---------------|----------------|---------------|----------------|---------------|---------------|
| | Census 1990 | est. 1995 | Census 2000 | est. 2005 | Census 2010 | est. 2011 | est. 2012 |
| C. La Crosse | 51,140 | 51,865 | 51,818 | 51,426 | 51,320 | 51,195 | 51,590 |
| T. Bergen | 1,223 | 1,247 | 1,317 | 1,391 | 1,364 | 1,365 | 1,364 |
| T. Campbell | 4,490 | 4,663 | 4,410 | 4,426 | 4,314 | 4,327 | 4,325 |
| T. Greenfield | 1,617 | 1,656 | 1,538 | 1,705 | 2,060 | 2,071 | 2,072 |
| T. Medary | 1,539 | 1,510 | 1,463 | 1,490 | 1,461 | 1,469 | 1,482 |
| T. Shelby | 5,002 | 4,971 | 4,687 | 4,781 | 4,715 | 4,714 | 4,707 |
| District Area | 65,011 | 65,912 | 65,233 | 65,219 | 65,234 | 65,141 | 65,540 |
| La Crosse County | 97,904 | 102,269 | 107,120 | 110,128 | 114,638 | 114,919 | 115,577 |
| State of Wisconsin | 4,891,769 | 5,101,581 | 5,363,715 | 5,580,757 | 5,686,986 | 5,694,236 | 5,703,500 |

| Municipality | PERCENT CHANGE | | | | | | AVG. ANNUAL 2000-2010 |
|---------------------------|-----------------|-----------------|-----------------|-----------------|-----------------|-----------------|-----------------------------|
| | 1990 to 1995 | 1995 to 2000 | 2000 to 2005 | 2005 to 2010 | 2010 to 2011 | 2011 to 2012 | |
| C. La Crosse | 1.4% | -0.1% | -0.8% | -0.2% | -0.2% | 0.8% | -0.1% |
| T. Bergen | 2.0% | 5.6% | 5.6% | -1.9% | 0.1% | -0.1% | 0.4% |
| T. Campbell | 3.9% | -5.4% | 0.4% | -2.5% | 0.3% | 0.0% | -0.2% |
| T. Greenfield | 2.4% | -7.1% | 10.9% | 20.8% | 0.5% | 0.0% | 3.8% |
| T. Medary | -1.9% | -3.1% | 1.8% | -1.9% | 0.5% | 0.9% | 0.0% |
| T. Shelby | -0.6% | -5.7% | 2.0% | -1.4% | 0.0% | -0.1% | 0.1% |
| District Area | 1.4% | -1.0% | 0.0% | 0.0% | -0.1% | 0.6% | 0.0% |
| La Crosse County | 4.5% | 4.7% | 2.8% | 4.1% | 0.2% | 0.6% | 0.8% |
| State of Wisconsin | 4.3% | 5.1% | 4.0% | 1.9% | 0.1% | 0.2% | 0.7% |

Source: U. S. Census Bureau & Demographic Services Center, WIDOA



Figure 4-A

School District of La Crosse

Population for City of La Crosse

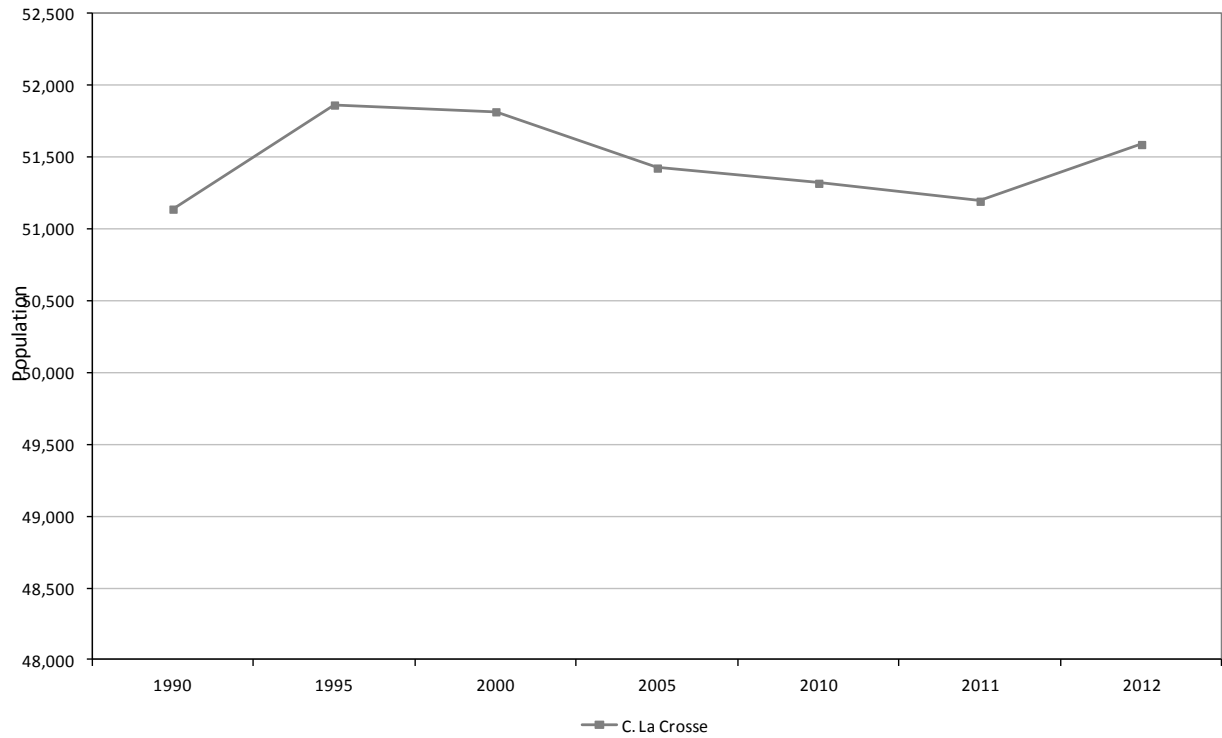
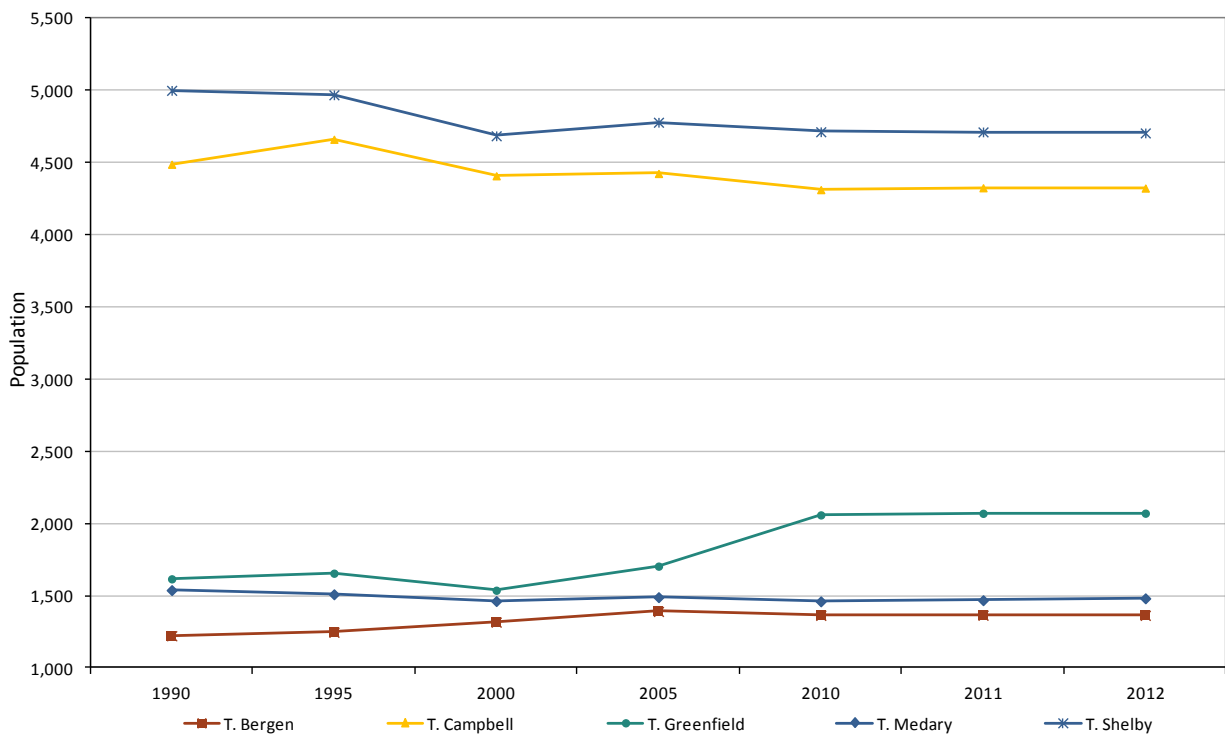


Figure 4-B

School District of La Crosse

Population for Area Towns



Race/Ethnicity

Breakdown of the population by race/ethnicity for the school district area municipalities are provided in Table 4. The municipal population is majority non-Hispanic white, although the School District of La Crosse does have a notable minority population of all race/ethnic groups. The Asian population is the largest minority population (4.5%) in the district area.

TABLE 4
Race/Ethnicity Population by Municipality: 2010
School District of La Crosse

| Municipality | Total | White | African American | Hispanic | Asian | American Indian |
|----------------------|---------------|---------------|------------------|--------------|--------------|-----------------|
| C. La Crosse | 51,320 | 45,423 | 1,517 | 1,012 | 2,704 | 463 |
| T. Bergen | 1,364 | 1,335 | 4 | 11 | 2 | 10 |
| T. Campbell | 4,314 | 4,069 | 58 | 41 | 98 | 37 |
| T. Greenfield | 2,060 | 2,018 | 5 | 15 | 12 | 6 |
| T. Medary | 1,461 | 1,404 | 6 | 24 | 21 | 4 |
| T. Shelby | 4,715 | 4,493 | 38 | 45 | 105 | 20 |
| District Area | 65,234 | 58,742 | 1,628 | 1,148 | 2,942 | 540 |
| La Crosse County | 114,638 | 104,417 | 2,213 | 1,741 | 5,120 | 816 |
| State of Wisconsin | 5,686,986 | 4,738,411 | 380,660 | 336,056 | 143,931 | 68,593 |

Percent of Total Population

| Municipality | White | African American | Hispanic | Asian | American Indian |
|----------------------|---------------|------------------|--------------|--------------|-----------------|
| C. La Crosse | 88.51% | 2.96% | 1.97% | 5.27% | 0.90% |
| T. Bergen | 97.87% | 0.29% | 0.81% | 0.15% | 0.73% |
| T. Campbell | 94.32% | 1.34% | 0.95% | 2.27% | 0.86% |
| T. Greenfield | 97.96% | 0.24% | 0.73% | 0.58% | 0.29% |
| T. Medary | 96.10% | 0.41% | 1.64% | 1.44% | 0.27% |
| T. Shelby | 95.29% | 0.81% | 0.95% | 2.23% | 0.42% |
| District Area | 90.05% | 2.50% | 1.76% | 4.51% | 0.83% |
| La Crosse County | 91.08% | 1.93% | 1.52% | 4.47% | 0.71% |
| State of Wisconsin | 83.32% | 6.69% | 5.91% | 2.53% | 1.21% |

Source: <http://legis.wisconsin.gov/ltsb/redistricting/data.htm>



Table 5 separates the total population for the City of La Crosse into racial and ethnic categories, as defined by the U.S. Census Bureau. Between 2000 and 2010, La Crosse saw a decline in the total population of non-Hispanic whites (-3.7%), while all minority populations increased. Of particular interest to the school district is the school age population of under 18 years of age. The two or more races, Hispanic, and African American populations increased while proportionally the American Indian (-21%) and Asian (-35%) school age population declined more than the non-Hispanic white population which declined by -18% between 2000 and 2010.

TABLE 5
Detailed Race and Ethnicity Characteristics, 2000-2010
City of La Crosse

| Race/Ethnicity | Total Population | | | | Population under 18 | | | |
|-------------------|------------------|--------|---------|----------|---------------------|-------|--------|----------|
| | 2000 | 2010 | Change | % Change | 2000 | 2010 | Change | % Change |
| Two or More Races | 607 | 983 | -1,590 | 61.9% | 321 | 523 | 202 | 62.9% |
| Hispanic | 592 | 1,012 | -1,604 | 70.9% | 194 | 334 | 140 | 72.2% |
| African American | 775 | 1,114 | -1,889 | 43.7% | 280 | 352 | 72 | 25.7% |
| American Indian | 244 | 253 | -497 | 3.7% | 76 | 60 | -16 | -21.1% |
| Asian | 2,391 | 2,482 | -4,873 | 3.8% | 1,247 | 809 | -438 | -35.1% |
| White | 47,158 | 45,423 | -92,581 | -3.7% | 7622 | 6,231 | -1391 | -18.2% |

Source: U.S. Census 2000, 2010



Age Structure

Table 6 shows population change by age for the period from 1990 to 2010 for the City of La Crosse. Between 1990 and 2000, the number of children under age 10 declined by almost -20%, while the number of children age 10-19 increased by 12.5%. Between 2000 and 2010, the number of children under age 10 decreased (the number of children under age 5 increased by 90, while the 5-9 year age group declined by 465). The age groups that decreased in population from 2000 to 2010 were school age populations (5 to 9, 10 to 14, and 15 to 19) and 75 and older. The largest population increase from 2000 to 2010 was the Baby Boom generation (ages 55 to 74).

TABLE 6
Age Structure, 1990-2010
City of La Crosse

| Age | Number of People | | | Population Change | | Percent Change | | Avg. Annual % Change | |
|-------------------------|------------------|---------------|---------------|-------------------|-------------|----------------|--------------|----------------------|---------------|
| | 1990 | 2000 | 2010 | 1990-2000 | 2000-2010 | 1990-2000 | 2000-2010 | 1990-2000 | 2000-2010 |
| Under 5 | 3,349 | 2,496 | 2,586 | -853 | 90 | -25.5% | 3.6% | -2.83% | 0.40% |
| 5 to 9 | 3,081 | 2,651 | 2,186 | -430 | -465 | -14.0% | -17.5% | -1.55% | -1.95% |
| 10 to 14 | 2,556 | 2,836 | 2,100 | 280 | -736 | 11.0% | -26.0% | 1.22% | -2.88% |
| 15 to 19 | 4,759 | 5,433 | 5,357 | 674 | -76 | 14.2% | -1.4% | 1.57% | -0.16% |
| 20 to 54 | 25,398 | 27,250 | 27,428 | 1,852 | 178 | 7.3% | 0.7% | 0.81% | 0.07% |
| 55 to 74 | 7,819 | 6,854 | 7,766 | -965 | 912 | -12.3% | 13.3% | -1.37% | 1.48% |
| 75 and over | 4,041 | 4,298 | 3,897 | 257 | -401 | 6.4% | -9.3% | 0.71% | -1.04% |
| Total population | 51,003 | 51,818 | 51,320 | 815 | -498 | 1.6% | -1.0% | 0.18% | -0.11% |

Source: U.S. Census 1990, 2000, 2010

Figure 5 and Table 7 illustrate the population for the School District of La Crosse showing the change in age structure between 2000 and 2010. In the school district, between 2000 and 2010, the proportion of children under age 5 increased slightly, while the proportion of 5-14 year olds declined (the same pattern as the city). As would be expected, the proportion of 55-69 year olds increased, as the Baby Boom generation aged another ten years. The proportion of people age 20-29 also grew from 2000 to 2010.

Appendix A, on page 40, shows a series of maps representing 2010 age cohorts by block group for the School District of La Crosse. The maps allow the reader to observe the distinction between areas of the district by age group.



Figure 5

Age Structure
School District of La Crosse

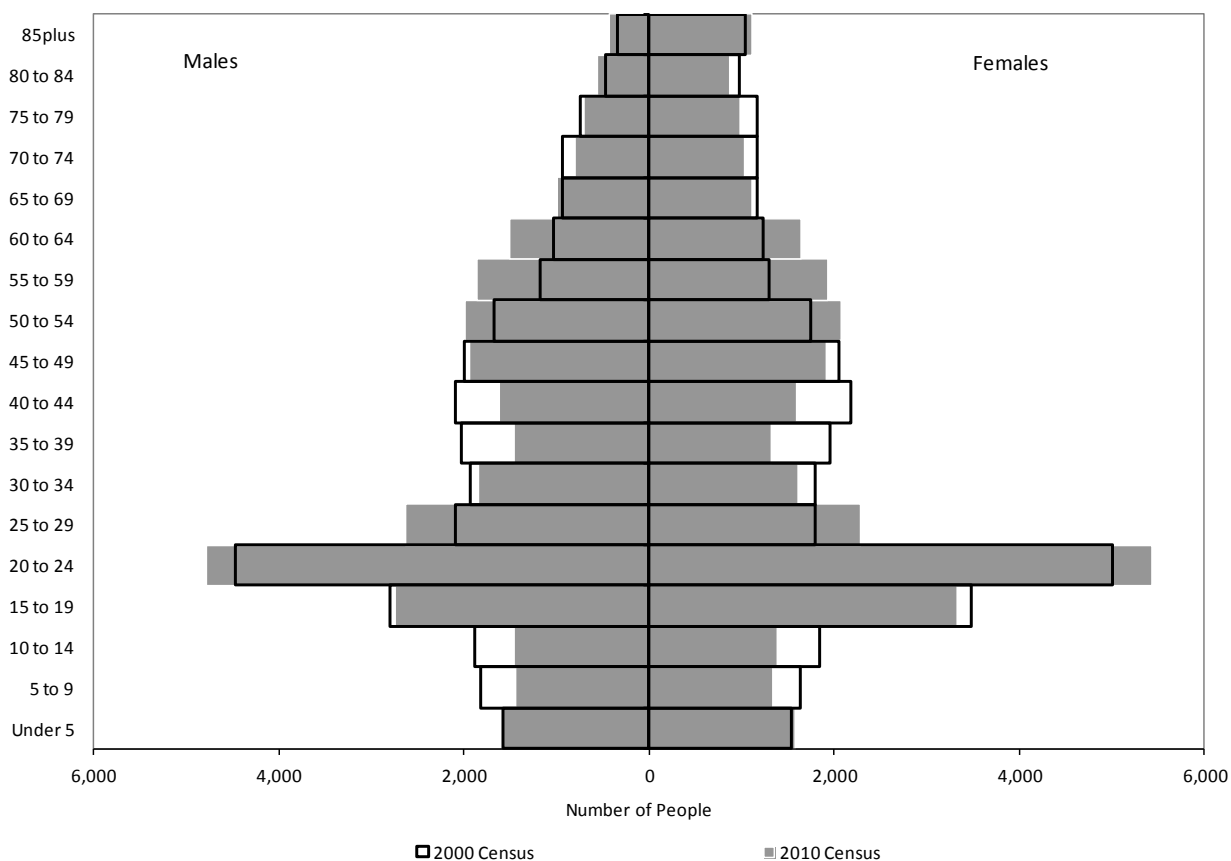


TABLE 7
Population by Age
School District of La Crosse

| Age | 2010 Total | | | 2000 Total | | |
|----------|------------|---------|--------|------------|---------|-------|
| | Males | Females | Total | Males | Females | Total |
| Under 5 | 1,591 | 1,574 | 3,165 | 1,584 | 1,537 | 3,121 |
| 5 to 9 | 1,453 | 1,331 | 2,784 | 1,828 | 1,623 | 3,451 |
| 10 to 14 | 1,458 | 1,388 | 2,846 | 1,889 | 1,838 | 3,727 |
| 15 to 19 | 2,748 | 3,325 | 6,073 | 2,803 | 3,474 | 6,277 |
| 20 to 24 | 4,794 | 5,428 | 10,222 | 4,473 | 5,000 | 9,473 |
| 25 to 29 | 2,631 | 2,275 | 4,906 | 2,098 | 1,795 | 3,893 |
| 30 to 34 | 1,842 | 1,614 | 3,456 | 1,936 | 1,796 | 3,732 |
| 35 to 39 | 1,456 | 1,320 | 2,776 | 2,034 | 1,955 | 3,989 |
| 40 to 44 | 1,626 | 1,598 | 3,224 | 2,099 | 2,170 | 4,269 |
| 45 to 49 | 1,950 | 1,918 | 3,868 | 1,996 | 2,048 | 4,044 |
| 50 to 54 | 1,984 | 2,068 | 4,052 | 1,677 | 1,746 | 3,423 |
| 55 to 59 | 1,859 | 1,934 | 3,793 | 1,180 | 1,301 | 2,481 |
| 60 to 64 | 1,513 | 1,638 | 3,151 | 1,039 | 1,223 | 2,262 |
| 65 to 69 | 994 | 1,105 | 2,099 | 945 | 1,168 | 2,113 |
| 70 to 74 | 802 | 1,024 | 1,826 | 943 | 1,169 | 2,112 |
| 75 to 79 | 700 | 975 | 1,675 | 748 | 1,169 | 1,917 |
| 80 to 84 | 567 | 864 | 1,431 | 470 | 977 | 1,447 |
| 85plus | 435 | 1,104 | 1,539 | 351 | 1,039 | 1,390 |



Housing Trends

Historical Housing Trends

Table 8 shows the number of housing starts in the School District of La Crosse from 2002 to 2011. The table shows the number of new homes in the entire town although only a portion of some towns are within the district.

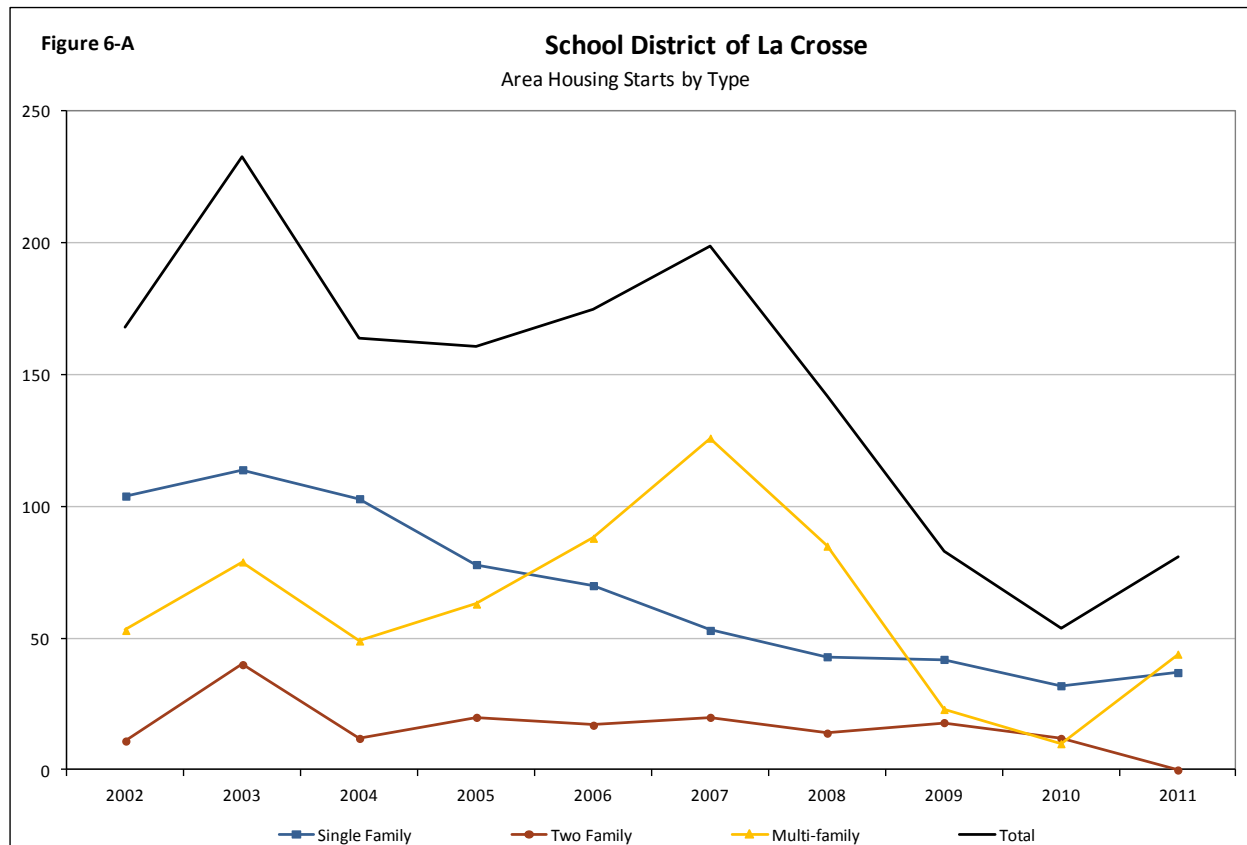
TABLE 8
School District Area Housing Starts
School District of La Crosse

| | 2002 | 2003 | 2004 | 2005 | 2006 | 2007 | 2008 | 2009 | 2010 | 2011 |
|----------------------|------------|------------|------------|------------|------------|------------|------------|-----------|-----------|-----------|
| District Area | | | | | | | | | | |
| TOTAL | 168 | 233 | 164 | 161 | 175 | 199 | 142 | 83 | 54 | 81 |
| Single Family | 104 | 114 | 103 | 78 | 70 | 53 | 43 | 42 | 32 | 37 |
| Two Family | 11 | 40 | 12 | 20 | 17 | 20 | 14 | 18 | 12 | 0 |
| Multi-family | 53 | 79 | 49 | 63 | 88 | 126 | 85 | 23 | 10 | 44 |
| C. La Crosse | | | | | | | | | | |
| TOTAL | 104 | 120 | 97 | 74 | 126 | 157 | 78 | 37 | 20 | 66 |
| Single Family | 41 | 43 | 46 | 35 | 36 | 23 | 26 | 17 | 16 | 22 |
| Two Family | 10 | 28 | 2 | 6 | 2 | 8 | 6 | 4 | 4 | 0 |
| Multi-family | 53 | 49 | 49 | 33 | 88 | 126 | 46 | 16 | 0 | 44 |
| T. Bergen | | | | | | | | | | |
| TOTAL | 11 | 12 | 8 | 4 | 5 | 2 | 1 | 1 | 1 | 0 |
| Single Family | 11 | 12 | 7 | 4 | 3 | 2 | 1 | 1 | 1 | 0 |
| Two Family | 0 | 0 | 1 | 0 | 2 | 0 | 0 | 0 | 0 | 0 |
| Multi-family | 0 | 0 | 0 | 0 | 0 | 0 | 0 | 0 | 0 | 0 |
| T. Campbell | | | | | | | | | | |
| TOTAL | 7 | 40 | 10 | 36 | 5 | 7 | 46 | 12 | 16 | 3 |
| Single Family | 6 | 10 | 7 | 6 | 5 | 3 | 5 | 3 | 4 | 3 |
| Two Family | 1 | 0 | 3 | 0 | 0 | 4 | 2 | 2 | 2 | 0 |
| Multi-family | 0 | 30 | 0 | 30 | 0 | 0 | 39 | 7 | 10 | 0 |
| T. Greenfield | | | | | | | | | | |
| TOTAL | 27 | 23 | 23 | 13 | 15 | 14 | 5 | 10 | 7 | 2 |
| Single Family | 27 | 23 | 23 | 11 | 14 | 14 | 5 | 10 | 7 | 2 |
| Two Family | 0 | 0 | 0 | 2 | 1 | 0 | 0 | 0 | 0 | 0 |
| Multi-family | 0 | 0 | 0 | 0 | 0 | 0 | 0 | 0 | 0 | 0 |
| T. Medary | | | | | | | | | | |
| TOTAL | 5 | 8 | 12 | 18 | 11 | 12 | 9 | 19 | 8 | 8 |
| Single Family | 5 | 8 | 6 | 10 | 3 | 4 | 3 | 7 | 2 | 8 |
| Two Family | 0 | 0 | 6 | 8 | 8 | 8 | 6 | 12 | 6 | 0 |
| Multi-family | 0 | 0 | 0 | 0 | 0 | 0 | 0 | 0 | 0 | 0 |
| T. Shelby | | | | | | | | | | |
| TOTAL | 14 | 30 | 14 | 16 | 13 | 7 | 3 | 4 | 2 | 2 |
| Single Family | 14 | 18 | 14 | 12 | 9 | 7 | 3 | 4 | 2 | 2 |
| Two Family | 0 | 12 | 0 | 4 | 4 | 0 | 0 | 0 | 0 | 0 |
| Multi-family | 0 | 0 | 0 | 0 | 0 | 0 | 0 | 0 | 0 | 0 |

Source: Demographic Services Center, WIDOA



Figure 6-A shows housing starts in the area by type of housing unit—single family, two family, and multi-family housing unit. Figures 6-B and 6-C show the total number of residential building permits issued for the City of La Crosse and the towns in the School District of La Crosse.



The majority of housing development over the last ten years has occurred in the City of La Crosse and Town of Greenfield. Development in the area has consisted of single-family homes and multi-family units. Households in single family homes, on average, contain more school-aged children than in two-family and multi-family complexes. The entire district area has experienced a decline in housing development over the past several years. Despite these challenges, the School District of La Crosse area still saw 37 new single family housing starts and 44 new multi-family units in 2011, indicating that development is still occurring within the district area but at a slower rate.



Figure 6-B

School District of La Crosse Area Housing Starts for the City of La Crosse

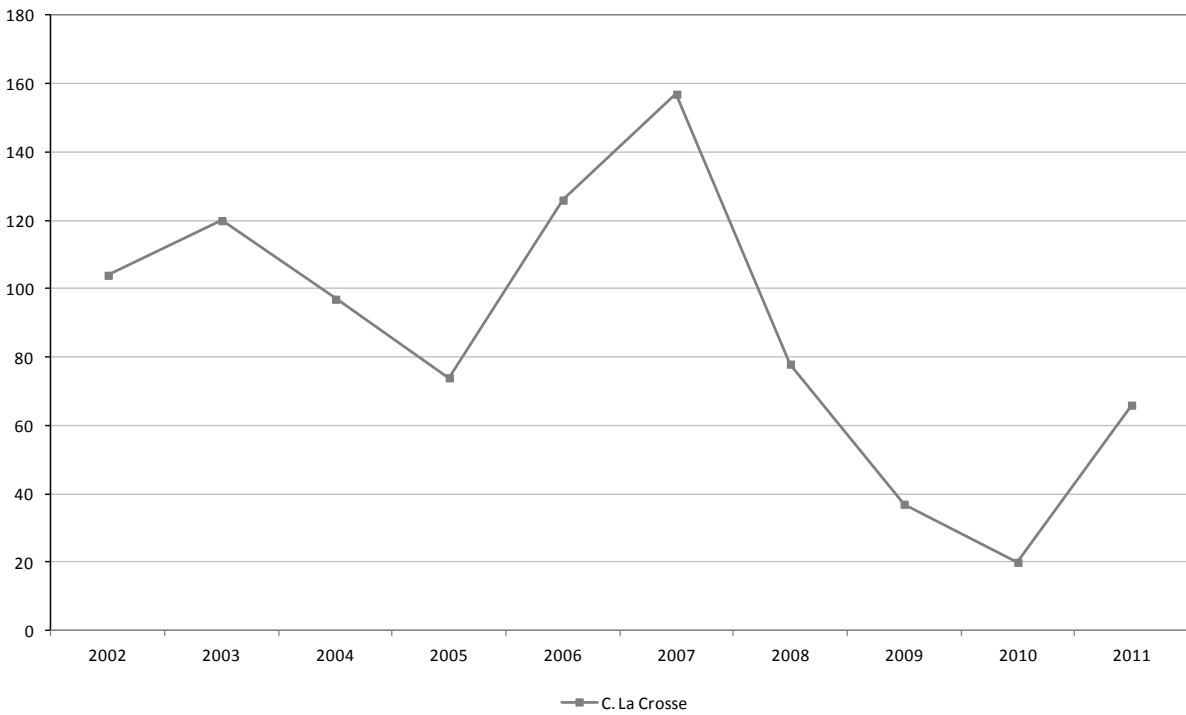
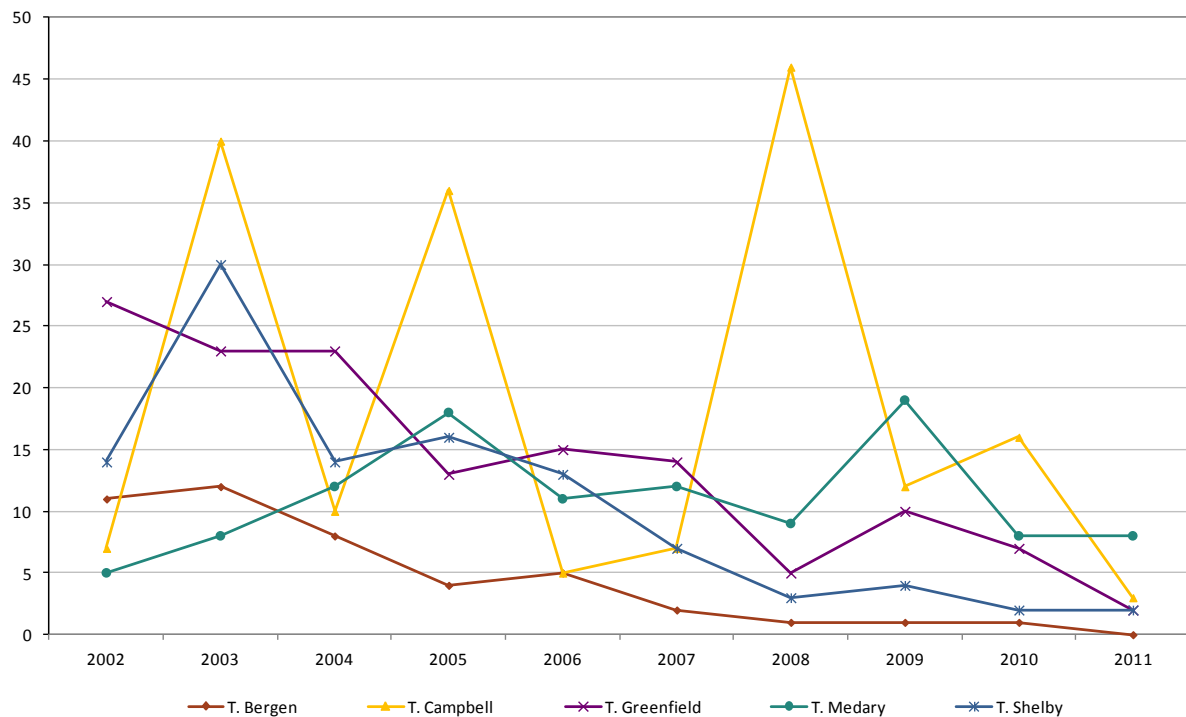
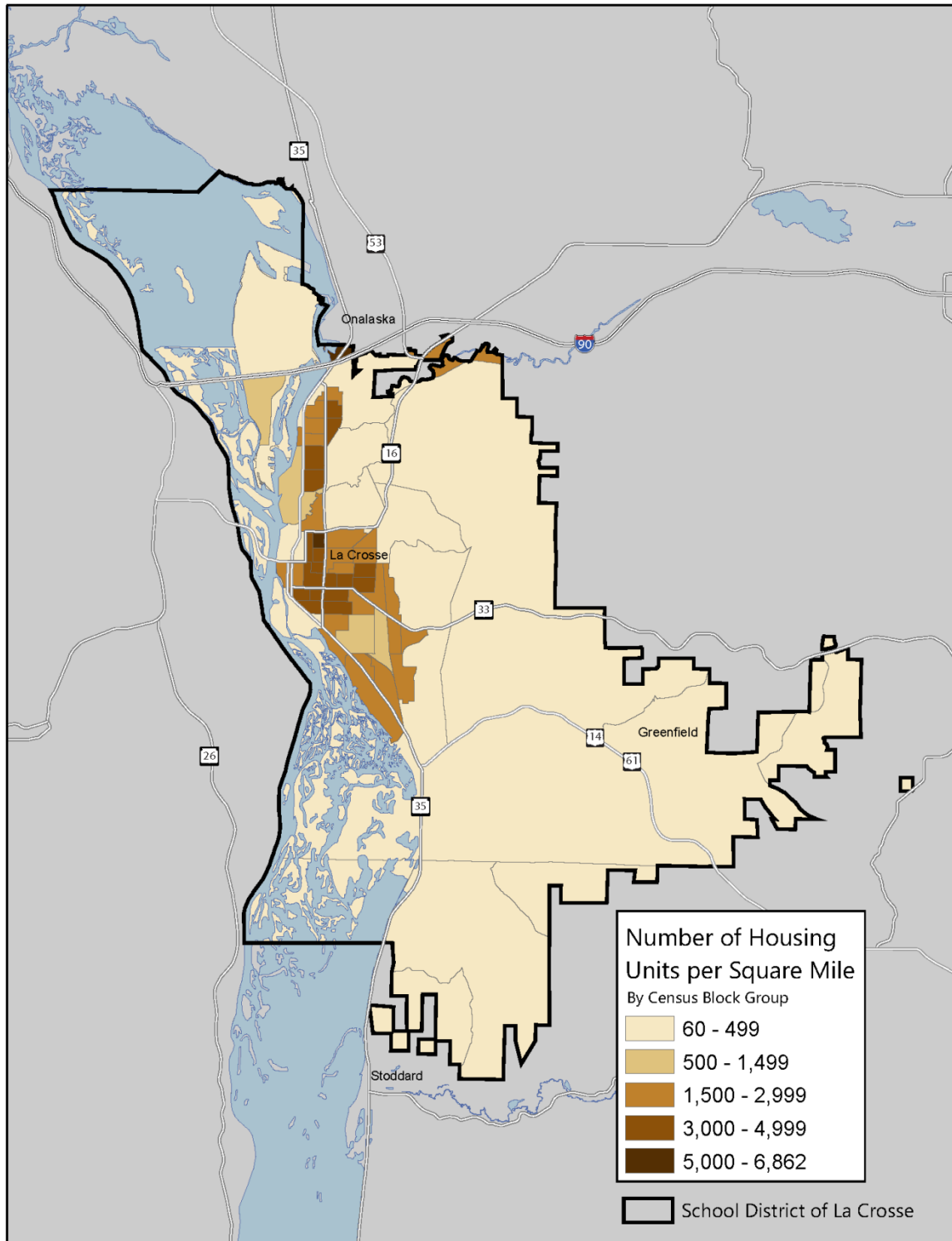


Figure 6-C

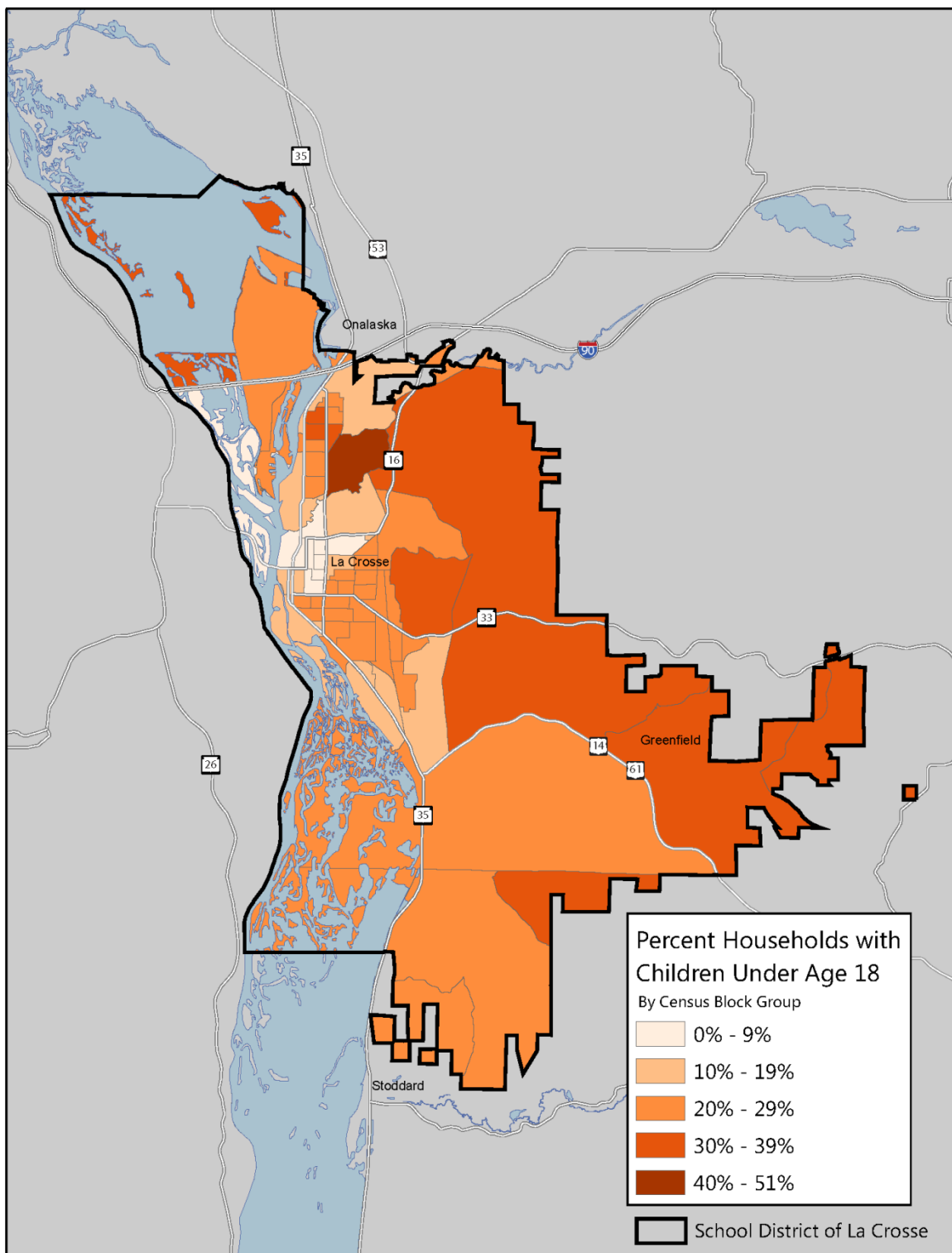
School District of La Crosse Area Housing Starts by Town



For planning purposes, it is helpful to know how characteristics of housing stock vary across space. This map shows the total number of housing units per square mile by block group for the school district in 2010. As would be expected, housing units are most dense in the City of La Crosse while the areas around the city are less dense.



This map illustrates the percent of all households with children under 18 years of age by block group. Households with children are dispersed throughout the district, but keep in mind that the Census block groups in the towns are geographically larger than in the City of La Crosse.



Housing Turnover

It is important to consider that turnover in ownership of existing housing stock also contributes to changes in enrollment. A district may increase or decrease in enrollment depending upon the cycle of resident homeowners, regardless of housing starts. For instance, a younger community will have a higher child-per-household ratio, whereas an older community will have a lower child-per-household ratio. At some point in time turnover in ownership in an older community may result in an increase in the child-per-household number. As younger families move into the area, the school district will tend to see new students enrolling into the district's schools. Absent new housing development or housing turnover, householders age in place and the number of school-aged children eventually declines. Turnover in ownership does not happen overnight, however, and slow turnover may occur for several years at varying rates.

Table 9 shows the in-migration of the City of La Crosse, the School District of La Crosse and La Crosse County. 72% of city residents live in the home they lived in one year ago while the school district residents are slightly higher at 75%. The economic downturn experienced in the last few years may have influenced the migration of residents who have not been able to afford to move at this time.

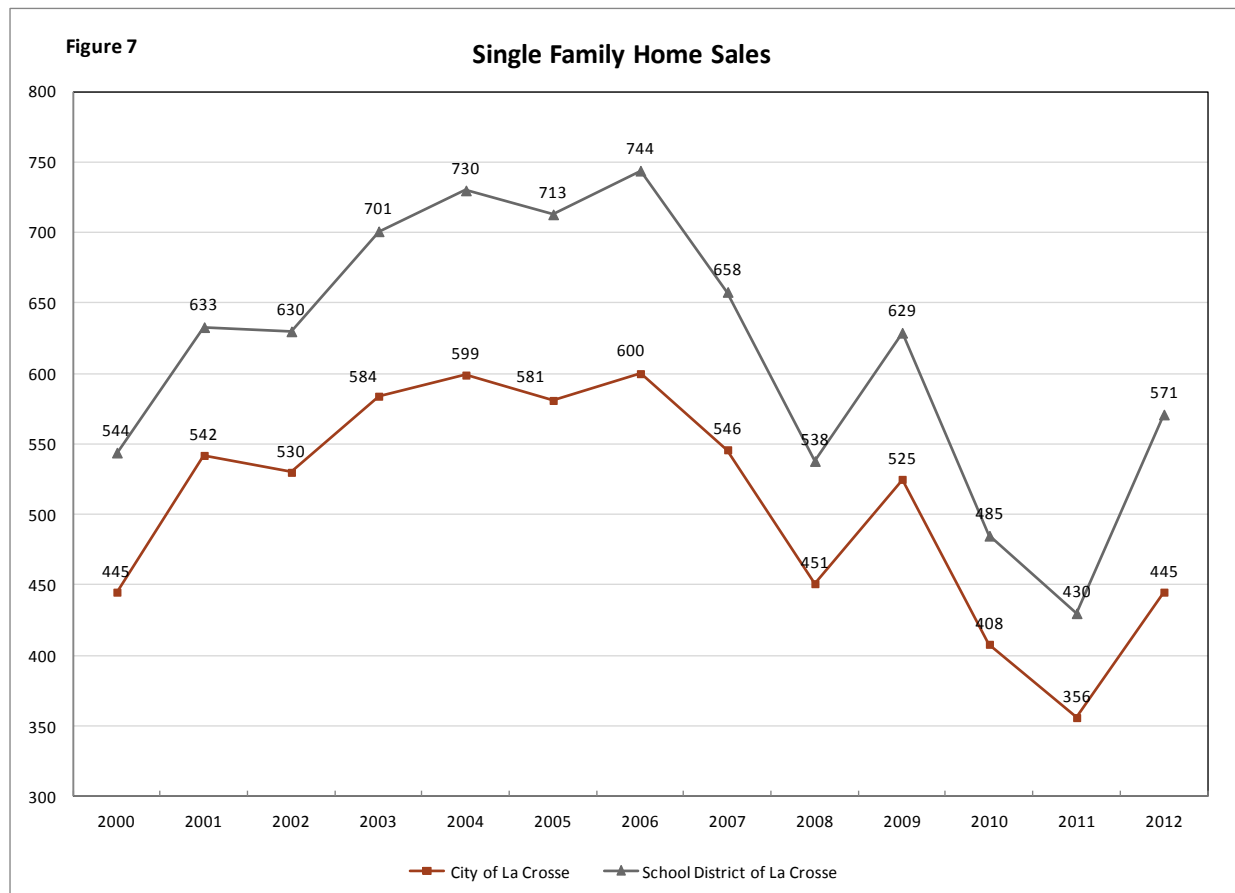
TABLE 9
In-migration, one year ago

| Municipality | Population age 1 and over, 2010 | % Living in the Same House | % Moved within Same County | % Moved in from Different County | % Moved in from Different State | % Moved from Abroad |
|------------------------------|--|---------------------------------------|---|---|--|--------------------------------|
| City of La Crosse | 50,989 | 71.8% | 17.6% | 7.1% | 3.1% | 0.4% |
| School District of La Crosse | 62,512 | 74.9% | 16.1% | 6.1% | 2.6% | 0.3% |
| La Crosse County | 112,667 | 80.2% | 12.9% | 4.3% | 2.4% | 0.3% |

Source: ACS 2007-2011



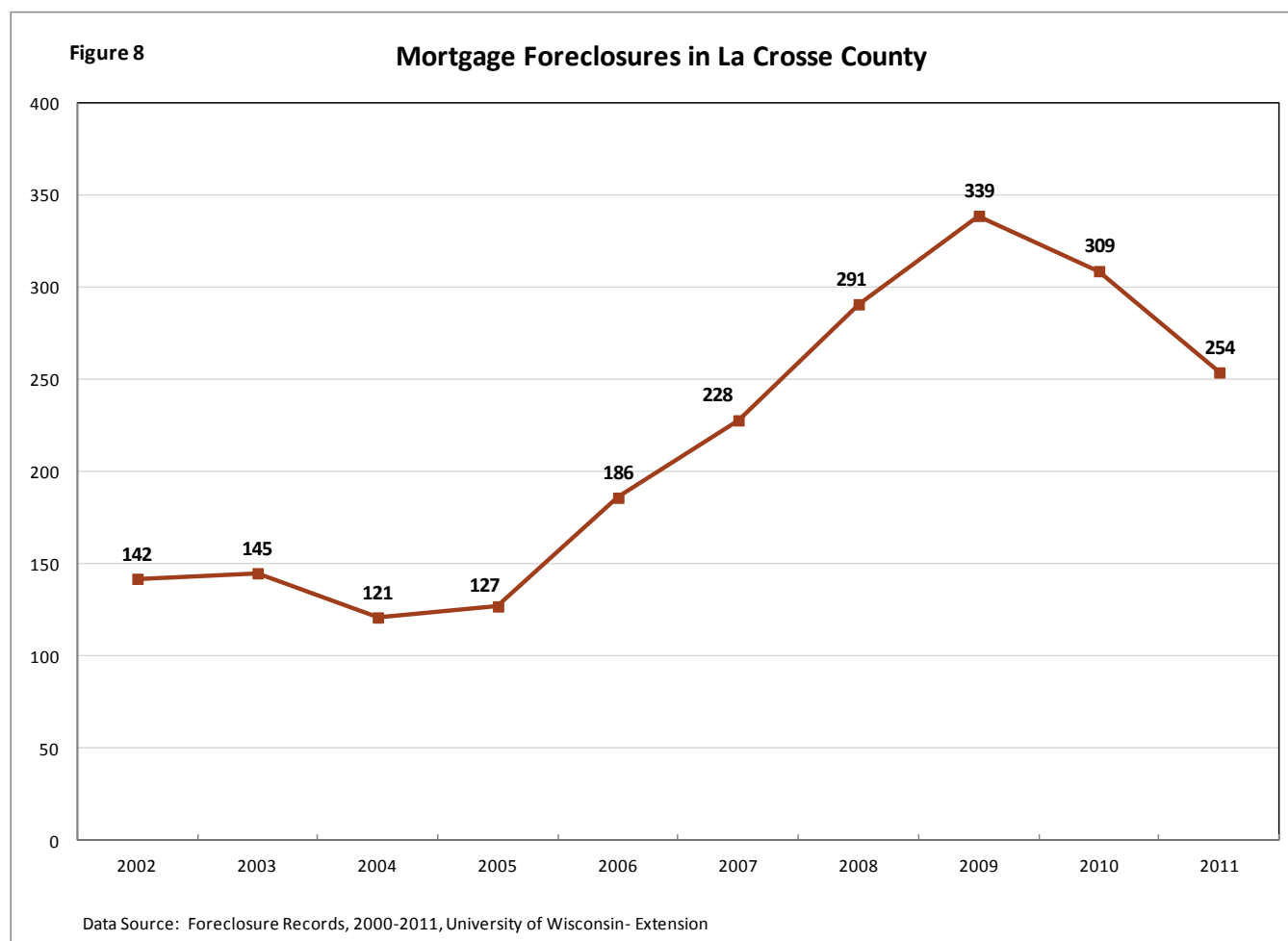
Both home sales and foreclosures influence housing turnover and may affect school enrollment. Figure 7 displays home sales from 2000 to 2012 for the City of La Crosse and the School District of La Crosse. Housing sales have fluctuated over the last thirteen years. Sales increased over time in the early 2000s. In 2006 home sales began to drop and continued to decline during the economic recession. However, in 2012 home sales have increased significantly and may be an indication that the economy is beginning to recover.



Since 2007, the overall trend in median housing sale price has increased slightly but has remained fairly steady over the last year. In the City of La Crosse, the average housing price of single family homes was \$162,905 and the average housing price of townhouses or other attached units was \$160,674 in 2010 according to city-data.com.



Home foreclosure is another important issue that is having impacts on the housing market in La Crosse County and could correspondingly affect school enrollment in the school district. In 2009, the county had the highest rate of foreclosure in this ten year period. However, the number of foreclosure cases has declined. In 2009, La Crosse County had the largest number of foreclosures of 339 homes in a ten year period. The number of foreclosure cases declined in 2010 (309) and 2011 (254) in the county. According to the U. S. Census, 5.8% of the total housing stock was vacant housing in 2010. Figure 8 shows the number of foreclosures in the county between 2002 and 2011 as reported by Wisconsin's Consolidated Court Automation Programs (CCAP).



Predicting future school district enrollment and the future age structure of the population in the City of La Crosse due to housing turnover is not easily answered. Several factors are difficult to predict that affect housing turnover. These include demand and supply variables like attractiveness to young families (demand), and suitable and available rental and owner occupied housing (supply). In addition, housing turnover depends on even more elusive variables, determined by housing market conditions and the individual preferences of homeowners. Addressing supply and demand components of housing turnover including housing value, educational attainment, employment, travel to work, housing tenure, and age of housing structure will be discussed in the following pages.



Housing Value

Young families need housing that is both affordable and can accommodate children. In general, young families have lower incomes and occupy less expensive housing than families with older, more established householders. Table 10 shows median value of owner occupied homes and average household size in the City of La Crosse, the School District of La Crosse, and La Crosse County. In the City of La Crosse the median housing value has increased from \$85,100 in 2000 to \$126,800 in 2011.

TABLE 10
Owner Occupied Housing Units

| | Count | Median Value | Average Household Size |
|------------------------------|--------|--------------|------------------------|
| City of La Crosse | 10,901 | \$126,800 | 2.30 |
| School District of La Crosse | 14,812 | \$135,400 | 2.36 |
| La Crosse County | 29,818 | \$151,900 | 2.52 |

Source: ACS 2007-2011

Education Attainment and Employment

Table 11 shows the educational attainment for the city and school district population in 2011. 31% of residents have graduated from high school, and 34% of residents have some college or an Associate's degree. 26.5% of city residents have a Bachelor's, Master's, Professional, or Doctoral degree.

TABLE 11
Educational Attainment

| Education | City of La Crosse | | School District of La Crosse | |
|------------------------------|-------------------|---------|------------------------------|---------|
| | Population | Percent | Population | Percent |
| No High School Diploma | 2,453 | 8.3% | 2,892 | 7.6% |
| High School Graduate | 9,262 | 31.2% | 11,549 | 30.4% |
| Some College | 6,543 | 22.0% | 8,074 | 21.2% |
| Associate's Degree | 3,588 | 12.1% | 4,732 | 12.5% |
| Bachelor's Degree | 4,878 | 16.4% | 6,465 | 17.0% |
| Master's or Doctorate Degree | 3,000 | 10.1% | 4,287 | 11.3% |

Source: ACS 2007-2011



The average travel time of the city's residents is 16 minutes to work and 29% are reported to be in management and business occupations according to the U.S. Census. 26.6% of the residents are employed in the educational and health services industries. Table 12 provides the top employers in the county who employ over 1,000 employees.

TABLE 12
Top Largest Employers
La Crosse County

| Employer | Industry Description | # of Employee |
|------------------------------|----------------------------|---------------|
| Gundersen-Lutheran | Medical Center | 5,000 |
| Mayo Clinic Health System | Medical Center | 3,225 |
| Trane Company | Air Cond/Heating Equipment | 2,900 |
| Reinhart Companies | Grocery Wholesaler | 2,000 |
| County of La Crosse | Government | 1,150 |
| School District of La Crosse | Education | 1,080 |

Source: City of La Crosse's Website

Housing Tenure

Table 13 shows owner-occupied and renter-occupied by age in the City of La Crosse and La Crosse County. In the City of La Crosse, about 51% of householders own their homes. In households likely to have school age children, 15% of householders age 35 to 44 are homeowners and 24% of householders age 45 to 54 are homeowners. Householders age 25 to 34 are the largest renters at 25%. In general, home ownership is spread out throughout the age groups except for the very young and very elderly populations.

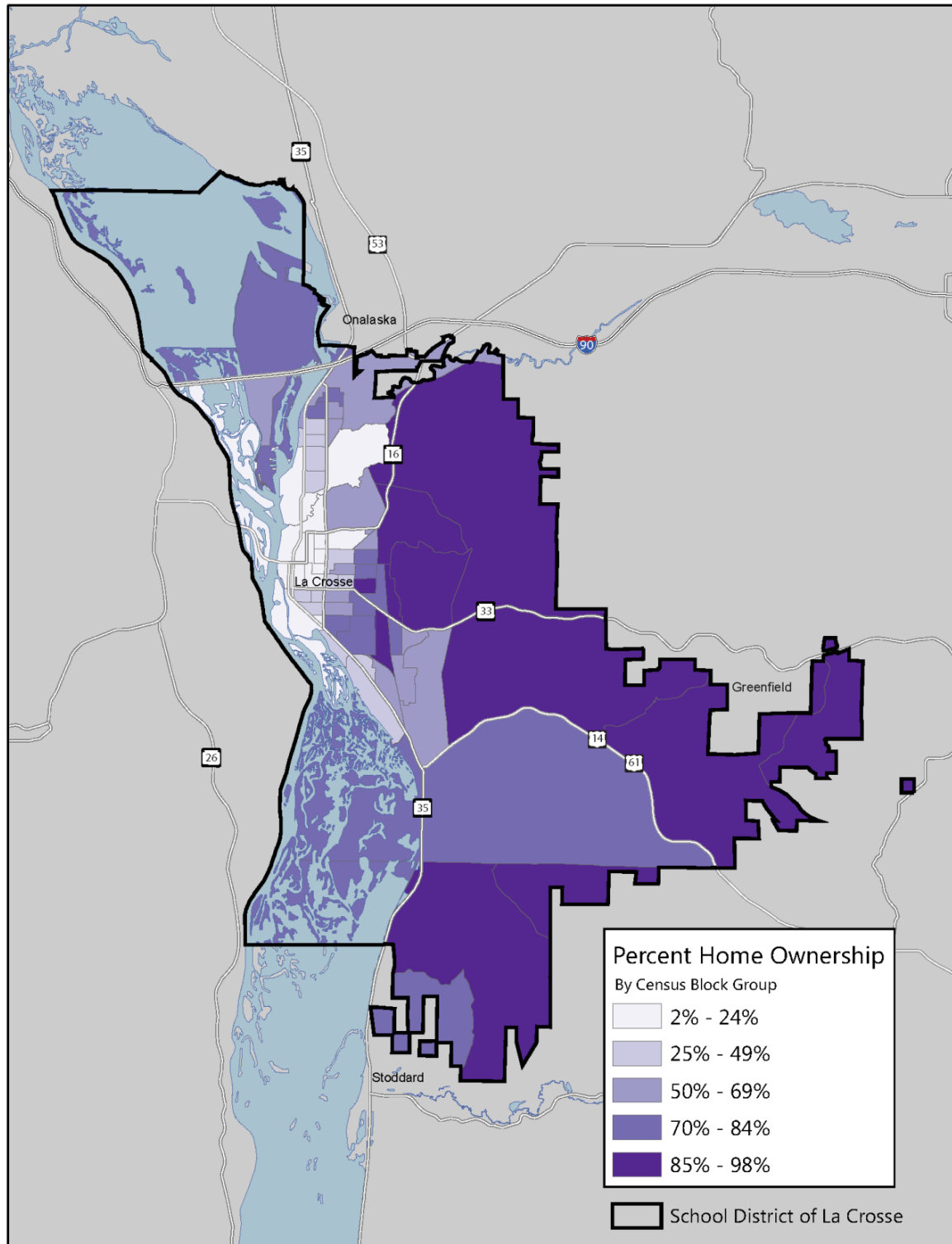
TABLE 13
Homeownership by Age

| Householder | City of La Crosse | | | | La Crosse County | | | |
|-----------------|-------------------|---------|---------|---------|------------------|---------|---------|---------|
| | Owners | Percent | Renters | Percent | Owners | Percent | Renters | Percent |
| 15 to 24 years | 174 | 2% | 3,255 | 31% | 317 | 1% | 4,049 | 25% |
| 25 to 34 years | 1,319 | 12% | 2,606 | 25% | 3,591 | 12% | 3,885 | 24% |
| 35 to 44 years | 1,688 | 15% | 1,060 | 10% | 5,481 | 18% | 1,925 | 12% |
| 45 to 54 years | 2,569 | 24% | 1,295 | 12% | 7,107 | 24% | 2,104 | 13% |
| 55 to 64 years | 1,975 | 18% | 883 | 8% | 6,279 | 21% | 1,446 | 9% |
| 65 to 74 years | 1,374 | 13% | 493 | 5% | 3,734 | 13% | 745 | 5% |
| 75 to 84 years | 1,136 | 10% | 566 | 5% | 2,350 | 8% | 967 | 6% |
| 85 years & over | 666 | 6% | 398 | 4% | 959 | 3% | 765 | 5% |

Source: ACS 2007-2011



For planning purposes, it is helpful to know how characteristics of housing stock vary across space. Observing the block group geography allows for a detailed examination of how home ownership is distributed across the district. Home ownership is spread out throughout the school district, and it is the outlying areas of the district where home ownership is greatest.



Rental units are significantly more likely to turnover than owner occupied homes, but rental turnover is less likely to bring increasing numbers of young families. While most young families prefer to own a home, some people are willing to rent to live in a desirable area. Table 14 shows rental unit characteristics in the City of La Crosse and La Crosse County. Most of the rental units in the city have two bedrooms. While this type of unit might serve young professionals or students, families with children often need three or more bedrooms. Gross rent is slightly lower in the city compared to the county as a whole.

TABLE 14
Renter Occupied Housing Units

| | City of La Crosse | La Crosse County |
|------------------------|-------------------|------------------|
| Zero bedrooms | 664 | 714 |
| 1 bedroom | 3,482 | 4,399 |
| 2 bedrooms | 4,019 | 6,690 |
| 3 or more | 2,391 | 4,083 |
| Avg. gross rent | \$650 | \$690 |

Source: ACS 2007-2011

Non-family households tend to live in rental units. Table 15 shows the living arrangements of non-family households in the City of La Crosse. 72% live alone while 28% live with another person.

TABLE 15
Population in Non-Family Households
City of La Crosse

| Non-Family Households | Population | Living Alone | Percent of Total | Living w/Others* | Percent of Total | Living Alone Over age 65 | Percent of Total |
|---------------------------|---------------|--------------|------------------|------------------|------------------|--------------------------|------------------|
| Female householder | 6,619 | 4,926 | 43% | 1,693 | 15% | 1,964 | 17% |
| Male householder | 4,804 | 3,281 | 29% | 1,523 | 13% | 640 | 6% |
| Total population | 11,423 | 8,207 | 72% | 3,216 | 28% | 2,604 | 23% |

* Other includes Housemates, Roomates, Boarders, or Unmarried partners

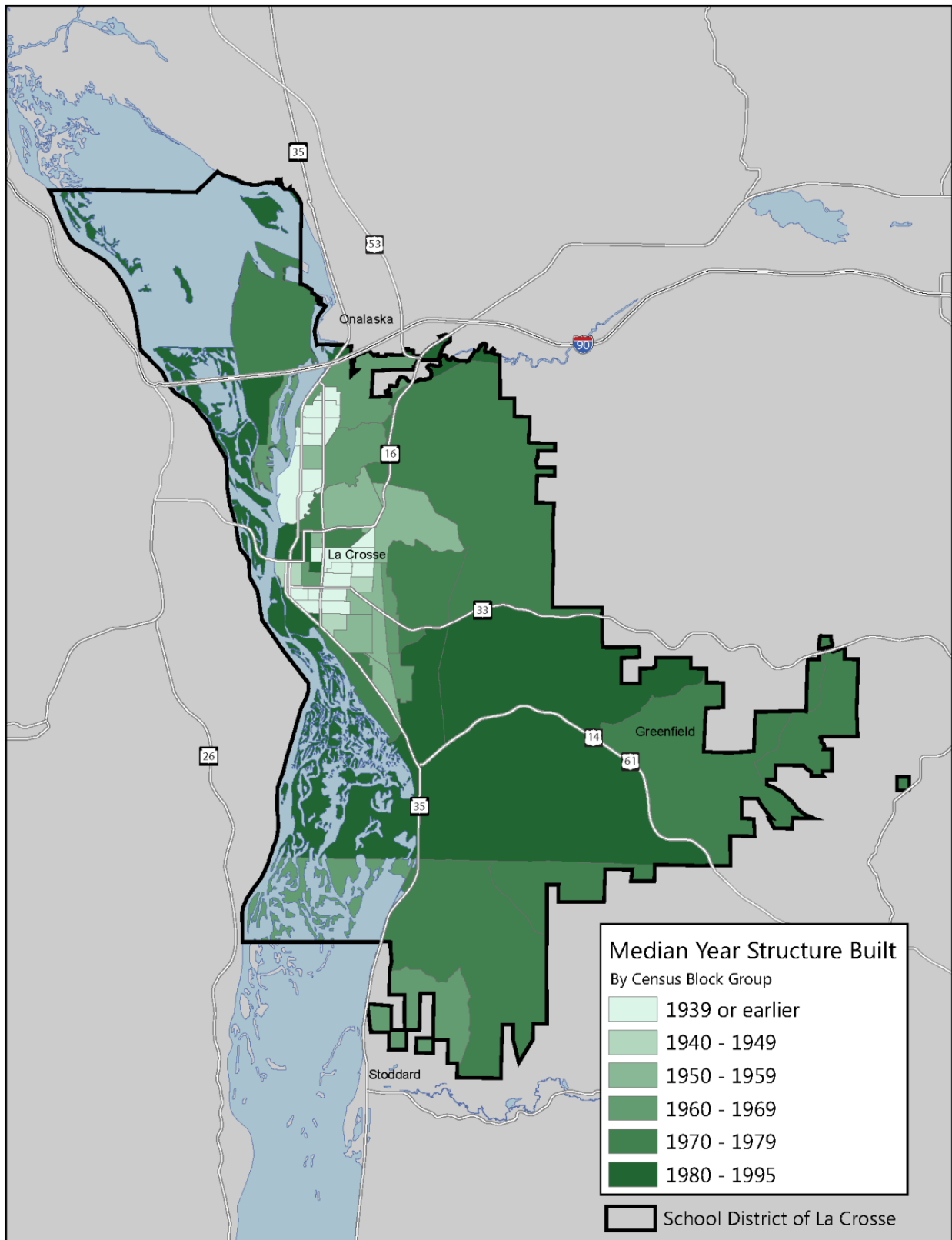
Source: ACS 2007-2011

Age of Housing Structure

The City of La Crosse contains older housing stock while much of the surrounding towns have newer housing stock. According to the City of La Crosse's comprehensive plan, the city has three types of neighborhoods: older neighborhoods (pre-1940's), "middle-aged" neighborhoods (built 1940's to 1970's) and new neighborhoods (built since 1980). The older and middle-aged neighborhoods have smaller lots, are pedestrian friendly, and were built on a grid street system. The challenges some of these neighborhoods face include incompatible land uses, blighted properties, or other concerns that can affect neighborhood livability and contribute to lack of investment.



This map illustrates the median year a home was built by block group.



Future Housing Trends

To better assess the potential for future housing development interviews were conducted with municipal personal. The School District of La Crosse is not likely to see any significant new housing development in the near future. The information below will discuss the future housing trends in the City of La Crosse and the surrounding towns.

The City of La Crosse is primarily focusing their attention on redevelopment and not new housing development. Currently the city is most interested in preserving owner occupied single family housing within the city and utilizing grant funds to revitalize existing single family homes. The Housing Rehabilitation Program utilizes the Federal Community Development Block Grant funds and is available to the homeowner. The Replacement Housing Program provides new owner occupied single family units and is contingent upon availability of federal funds. Although the program is city-wide past activity has focused on the Hamilton School/Hood Park neighborhood. The city has been active in addressing their housing issues and several documents have been posted to the city's website (<http://www.cityoflacrosse.org/index.aspx?nid=2557>).

The Town of Greenfield currently has one approved residential development, Riverview Heights, with approximately 50 of 96 lots still available for development. The newly constructed homes are valued on average at \$300,000 and development has slowed since the recent economic downturn.

Both the towns of Campbell and Medary are likely to experience little to no housing development in the near future. Campbell is limited in its ability to develop due to the lack of available land and the economic slowdown has affected Medary's new housing development.

The vision statement of the Town of Shelby's Comprehensive Plan reads, "We foresee our Town to be both urban and rural in character providing a pleasant living environment for our residents." The town's website provides a list of potential development areas which includes:

1. Hwy 33 from City limits to Irish Hill - Continue to allow development as single family.
2. Co Hwy F; Hwy 33 (ease end) - Continue to develop as single family residential.
3. Hwy 14-61 Corridors - Good potential as single family development with many wide valleys.
4. Hwy 35 – Mostly undeveloped, near city limits. Good topography for single family housing.
5. Roads and developments running from City into Shelby, Ebner Coulee Rd, Farnam St, Easter Rd, Crown Blvd, Old Town Hall Rd - Continue to develop as single family.

All indications point to slow new housing construction which will likely continue in the near term. The issue of new home development is not as critical for the district to monitor as the observance of the city's activities regarding the maintenance and upgrading of existing housing in the City of La Crosse.



Method

In order to generate school enrollment projections, we rely on a commonly used demographic technique called the “cohort survival” method or the “grade progression ratio” method. This method advances current students through the school system over time and applies rates of transfer (or “survival”) as the students who are now in school age from year to year and grade to grade. It is through these rates of transfer that we make assumptions about how migration into and out of the district and transfers to and from different schools will impact future enrollment.

Grade Progression Ratios

Grade progression ratios are used to measure district enrollment changes, year to year and grade to grade, that have occurred within the school district in the recent past. By examining these, we can better understand recent changes in enrollment. We use these ratios as the rates of transfer to inform future student projections.

Table 16 shows the grade progression ratios for the School District of La Crosse. The ratios measure the effects of in- and out-migration and the transfer of students between private and public schools. The ratios are calculated for several pairs of years and then averages of these based on different time frames are calculated for each grade.

TABLE 16
Grade Progression Ratios
School District of La Crosse

| YEAR CHANGES | B:K | K:1 | 1:2 | 2:3 | 3:4 | 4:5 | 5:6 | 6:7 | 7:8 | 8:9 | 9:10 | 10:11 | 11:12 |
|----------------|-------|-------|-------|-------|-------|-------|-------|-------|-------|-------|-------|-------|-------|
| 03-04/04-05 | 0.649 | 0.950 | 0.971 | 1.016 | 0.955 | 1.016 | 0.993 | 1.041 | 1.005 | 1.053 | 1.010 | 1.005 | 1.067 |
| 04-05/05-06 | 0.693 | 1.037 | 0.962 | 1.024 | 1.012 | 1.014 | 1.050 | 1.044 | 1.021 | 1.064 | 0.988 | 1.013 | 1.033 |
| 05-06/06-07 | 0.794 | 0.952 | 0.937 | 0.965 | 0.996 | 0.963 | 1.044 | 1.002 | 1.000 | 1.057 | 1.013 | 1.026 | 1.008 |
| 06-07/07-08 | 0.712 | 0.962 | 1.000 | 1.040 | 0.998 | 1.013 | 1.020 | 1.027 | 1.015 | 1.031 | 1.007 | 0.990 | 1.036 |
| 07-08/08-09 | 0.772 | 0.978 | 1.024 | 0.995 | 1.022 | 1.000 | 0.996 | 1.012 | 1.009 | 1.043 | 0.975 | 1.003 | 1.033 |
| 08-09/09-10 | 0.807 | 1.006 | 0.993 | 0.985 | 1.002 | 1.004 | 0.977 | 1.000 | 0.977 | 1.050 | 0.995 | 1.023 | 1.027 |
| 09-10/10-11 | 0.743 | 0.942 | 0.980 | 1.000 | 0.986 | 0.981 | 0.989 | 1.021 | 1.031 | 1.092 | 1.019 | 0.973 | 1.010 |
| 10-11/11-12 | 0.775 | 0.996 | 0.978 | 1.000 | 0.978 | 0.980 | 1.007 | 1.004 | 1.018 | 1.002 | 0.987 | 0.962 | 1.089 |
| 11-12/12-13 | 0.822 | 0.950 | 1.000 | 0.953 | 1.016 | 0.971 | 0.982 | 1.000 | 0.985 | 1.018 | 1.000 | 0.965 | 1.059 |
| Baseline | 0.756 | 0.967 | 0.984 | 1.003 | 0.998 | 0.997 | 0.995 | 1.009 | 1.008 | 1.045 | 1.002 | 1.001 | 1.038 |
| 5 Year Trend | 0.784 | 0.974 | 0.995 | 0.987 | 1.001 | 0.987 | 0.990 | 1.007 | 1.004 | 1.041 | 0.995 | 0.985 | 1.044 |
| 2 Year "Trend" | 0.798 | 0.973 | 0.989 | 0.977 | 0.997 | 0.975 | 0.994 | 1.002 | 1.002 | 1.010 | 0.994 | 0.963 | 1.074 |

*Shaded progression ratios are excluded from the Baseline Average

The grade progression ratios can be interpreted in the following manner. The Baseline ratio for 2:3 is 1.003. This means that in the School District of La Crosse, the third grade class is on average 0.3%



larger each year than the second grade class was the previous year (the result of transfers from other schools and in-migration into the district). The B:K Baseline ratio of .756 indicates that on average, 75.6% of births in the district area attend kindergarten five years later. Outliers (ratios outside of one standard deviation of the mean) are not included in the calculation of the Baseline average ratios.

In order to examine future enrollment under different growth assumptions, we generate three sets of grade progression ratios that correspond to the different projection models shown later in this report. In addition to the Baseline ratios (averages 10 years of enrollment), we examine rates of transfer in the last 5 years and last 2 years effectively weighing enrollment change patterns from different time periods more heavily than the Baseline. Any significant deviations from the rates of in- and out-migration in the district area will have a corresponding effect on enrollment. These additional models allow us to examine alternative outcomes compared to the overall trends of the Baseline model. Figure 9 shows the differences between these three sets of grade progression ratios.

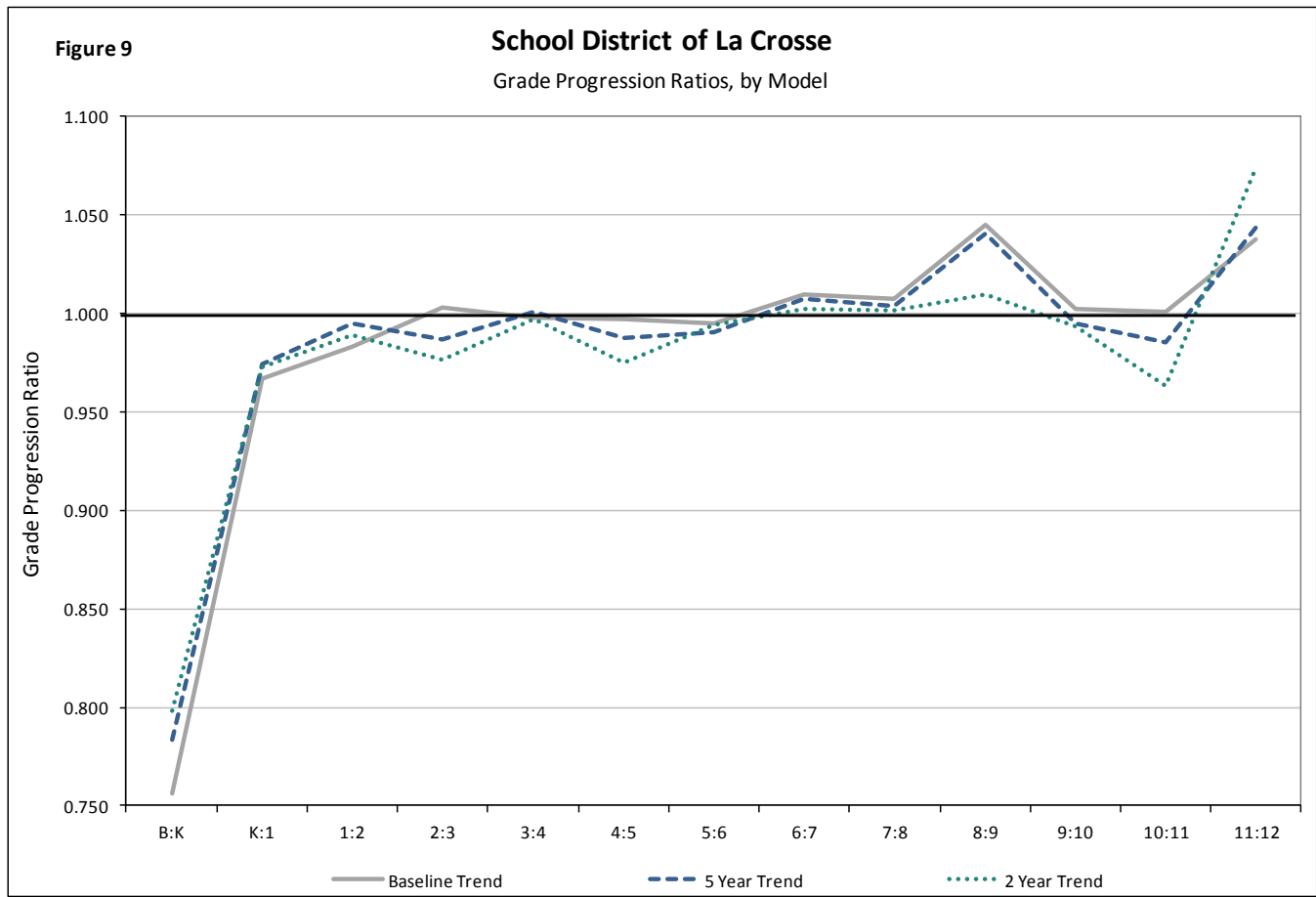


Table 17 shows observed transfer ratios between birth and 4K and the average grade progression ratios between birth and 4K for the three models. These grade progression ratios will be used to project future four year old kindergartners.

TABLE 17
4K Grade Progression Ratios
School District of La Crosse

| Birth/4K Year | B:4K |
|----------------------|--------------|
| 99-00/04-05 | 0.457 |
| 00-01/05-06 | 0.586 |
| 01-02/06-07 | 0.532 |
| 02-03/07-08 | 0.611 |
| 03-04/08-09 | 0.632 |
| 04-05/09-10 | 0.631 |
| 05-06/10-11 | 0.649 |
| 06-07/11-12 | 0.733 |
| 07-08/12-13 | 0.664 |
| Baseline | 0.630 |
| 5-Year Trend | 0.662 |
| 2-Year Trend | 0.647 |



School Enrollment Projections

When considering all of the projections provided in this report for decision-making, it is important to recognize that population projections of all types, including school enrollment projections, are more accurate in the immediate future than they are farther into the future. This is especially true for elementary grades, because the students who will enter kindergarten after 2017 have not yet been born. Overall, our projections are more reliable over the next five years (up to the 2017/18 school year) than they are in the latter half of the next decade. Projections are provided by grade as well as by grade grouping.

Baseline Projections

The Baseline model (Table 18) projects enrollment using the assumption that average trends year to year, grade to grade, will continue into the future. This model assumes that long term trends (past ten years) in enrollment and migration will be representative of future trends in the district. Enrollment is projected to increase by 89 students in five years (6,703 students in 2012/13 to 6,792 students in 2017/18), or 1.3%.

TABLE 18
Baseline Projection Model
School District of La Crosse

| | SCHOOL YEAR | | | | | | | | | |
|--------------|--------------|--------------|--------------|--------------|--------------|--------------|--------------|--------------|--------------|--------------|
| | 13-14 | 14-15 | 15-16 | 16-17 | 17-18 | 18-19 | 19-20 | 20-21 | 21-22 | 22-23 |
| 4K | 442 | 429 | 423 | 423 | 421 | 420 | 419 | 418 | 417 | 416 |
| K | 522 | 523 | 507 | 500 | 500 | 498 | 497 | 496 | 494 | 493 |
| 1 | 529 | 505 | 506 | 490 | 484 | 483 | 482 | 481 | 479 | 478 |
| 2 | 465 | 520 | 497 | 497 | 482 | 476 | 475 | 474 | 473 | 471 |
| 3 | 485 | 467 | 522 | 498 | 499 | 484 | 477 | 477 | 476 | 474 |
| 4 | 467 | 484 | 466 | 521 | 497 | 498 | 483 | 477 | 476 | 475 |
| 5 | 503 | 466 | 482 | 465 | 520 | 496 | 497 | 482 | 475 | 475 |
| 6 | 427 | 500 | 464 | 480 | 462 | 517 | 494 | 494 | 479 | 473 |
| 7 | 489 | 431 | 505 | 468 | 485 | 467 | 522 | 498 | 499 | 484 |
| 8 | 430 | 492 | 434 | 509 | 472 | 488 | 470 | 526 | 502 | 503 |
| 9 | 486 | 450 | 514 | 454 | 532 | 493 | 510 | 491 | 550 | 525 |
| 10 | 458 | 487 | 451 | 516 | 455 | 533 | 494 | 511 | 493 | 551 |
| 11 | 494 | 459 | 488 | 451 | 516 | 455 | 533 | 494 | 512 | 493 |
| 12 | 542 | 512 | 476 | 506 | 468 | 536 | 472 | 554 | 513 | 531 |
| TOTAL | 6,738 | 6,724 | 6,734 | 6,778 | 6,792 | 6,844 | 6,826 | 6,873 | 6,838 | 6,841 |
| K-12 | 6,296 | 6,295 | 6,311 | 6,355 | 6,371 | 6,424 | 6,407 | 6,455 | 6,421 | 6,425 |
| K-5 | 2,971 | 2,964 | 2,980 | 2,972 | 2,982 | 2,935 | 2,911 | 2,886 | 2,873 | 2,866 |
| 6-8 | 1,346 | 1,423 | 1,403 | 1,457 | 1,418 | 1,472 | 1,486 | 1,518 | 1,480 | 1,459 |
| 9-12 | 1,979 | 1,907 | 1,929 | 1,926 | 1,971 | 2,016 | 2,010 | 2,051 | 2,067 | 2,100 |



5 Year Trend Projections

The 5 Year Trend model (Table 19) uses the grade progression ratios from the last five years and recent birth trends to project what future enrollments would look like if more recent patterns were representative of future trends. For the 5 Year Trend model, enrollment is projected to increase from 6,703 students in 2012/13 to 6,884 students in 2017/18. With recent migration rates weighted more heavily, enrollment in the School District of La Crosse is projected to increase by 2.7% over the next five years.

TABLE 19
5 Year Trend Projection Model
School District of La Crosse

| GRADE | SCHOOL YEAR | | | | | | | | | |
|--------------|--------------|--------------|--------------|--------------|--------------|--------------|--------------|--------------|--------------|--------------|
| | 13-14 | 14-15 | 15-16 | 16-17 | 17-18 | 18-19 | 19-20 | 20-21 | 21-22 | 22-23 |
| 4K | 465 | 451 | 456 | 465 | 469 | 473 | 477 | 481 | 485 | 489 |
| K | 542 | 543 | 526 | 527 | 529 | 528 | 526 | 524 | 522 | 520 |
| 1 | 533 | 528 | 529 | 513 | 513 | 516 | 514 | 512 | 511 | 509 |
| 2 | 471 | 530 | 525 | 526 | 510 | 511 | 513 | 512 | 510 | 508 |
| 3 | 477 | 464 | 523 | 518 | 519 | 504 | 504 | 507 | 505 | 503 |
| 4 | 468 | 477 | 465 | 524 | 519 | 519 | 504 | 504 | 507 | 505 |
| 5 | 498 | 462 | 471 | 459 | 517 | 512 | 513 | 498 | 498 | 500 |
| 6 | 425 | 493 | 458 | 466 | 454 | 512 | 507 | 508 | 493 | 493 |
| 7 | 488 | 428 | 496 | 461 | 470 | 458 | 516 | 511 | 512 | 496 |
| 8 | 429 | 490 | 430 | 498 | 463 | 472 | 460 | 518 | 513 | 514 |
| 9 | 484 | 446 | 510 | 447 | 519 | 482 | 491 | 478 | 539 | 534 |
| 10 | 455 | 482 | 444 | 507 | 445 | 516 | 480 | 488 | 476 | 536 |
| 11 | 486 | 448 | 474 | 437 | 499 | 438 | 508 | 473 | 481 | 469 |
| 12 | 545 | 507 | 467 | 495 | 456 | 521 | 457 | 531 | 493 | 502 |
| TOTAL | 6,763 | 6,748 | 6,775 | 6,844 | 6,884 | 6,962 | 6,970 | 7,044 | 7,044 | 7,079 |
| K-12 | 6,298 | 6,298 | 6,319 | 6,379 | 6,415 | 6,489 | 6,493 | 6,563 | 6,559 | 6,591 |
| K-5 | 2,988 | 3,005 | 3,039 | 3,067 | 3,108 | 3,090 | 3,074 | 3,056 | 3,052 | 3,046 |
| 6-8 | 1,341 | 1,410 | 1,384 | 1,426 | 1,387 | 1,441 | 1,483 | 1,537 | 1,517 | 1,503 |
| 9-12 | 1,969 | 1,883 | 1,895 | 1,887 | 1,920 | 1,958 | 1,937 | 1,970 | 1,989 | 2,041 |



2 Year "Trend" Projections

The 2 Year "Trend" model (Table 20) uses the grade progression ratios from the last two years to project what future enrollments would look like if even more recent patterns were representative of future trends. For the 2 Year "Trend" model, enrollment is projected to increase from 6,703 students in 2012/13 to 6,760 students in 2017/18, or 0.8% increase.

TABLE 20
2 Year "Trend" Projection Model
School District of La Crosse

| GRADE | SCHOOL YEAR | | | | | | | | | |
|--------------|--------------|--------------|--------------|--------------|--------------|--------------|--------------|--------------|--------------|--------------|
| | 13-14 | 14-15 | 15-16 | 16-17 | 17-18 | 18-19 | 19-20 | 20-21 | 21-22 | 22-23 |
| 4K | 452 | 454 | 440 | 446 | 454 | 458 | 462 | 466 | 470 | 474 |
| K | 552 | 553 | 536 | 537 | 539 | 537 | 536 | 534 | 532 | 530 |
| 1 | 532 | 537 | 538 | 522 | 522 | 525 | 523 | 521 | 519 | 517 |
| 2 | 468 | 526 | 531 | 532 | 516 | 516 | 519 | 517 | 515 | 514 |
| 3 | 472 | 457 | 514 | 519 | 519 | 504 | 504 | 507 | 505 | 503 |
| 4 | 467 | 470 | 455 | 512 | 517 | 518 | 502 | 503 | 505 | 504 |
| 5 | 492 | 455 | 459 | 444 | 500 | 504 | 505 | 490 | 490 | 493 |
| 6 | 427 | 489 | 453 | 456 | 442 | 497 | 502 | 502 | 487 | 488 |
| 7 | 485 | 428 | 490 | 454 | 457 | 443 | 498 | 503 | 503 | 488 |
| 8 | 428 | 486 | 428 | 491 | 454 | 458 | 443 | 499 | 503 | 504 |
| 9 | 470 | 432 | 491 | 432 | 496 | 459 | 462 | 448 | 504 | 508 |
| 10 | 454 | 467 | 429 | 488 | 430 | 492 | 456 | 459 | 445 | 501 |
| 11 | 475 | 437 | 449 | 413 | 470 | 414 | 474 | 439 | 443 | 429 |
| 12 | 560 | 510 | 470 | 483 | 444 | 504 | 444 | 509 | 471 | 475 |
| TOTAL | 6,732 | 6,700 | 6,683 | 6,728 | 6,760 | 6,829 | 6,831 | 6,897 | 6,894 | 6,927 |
| K-12 | 6,280 | 6,246 | 6,243 | 6,282 | 6,305 | 6,371 | 6,369 | 6,431 | 6,424 | 6,454 |
| K-5 | 2,982 | 2,998 | 3,033 | 3,065 | 3,114 | 3,104 | 3,089 | 3,071 | 3,067 | 3,061 |
| 6-8 | 1,339 | 1,402 | 1,371 | 1,400 | 1,353 | 1,398 | 1,443 | 1,504 | 1,494 | 1,480 |
| 9-12 | 1,959 | 1,846 | 1,839 | 1,816 | 1,839 | 1,869 | 1,837 | 1,856 | 1,863 | 1,913 |



Comparison of Projection Models

Figures 10-14 and Tables 21-25 compare the three enrollment projection models broken down by total district enrollment and by grade groupings.

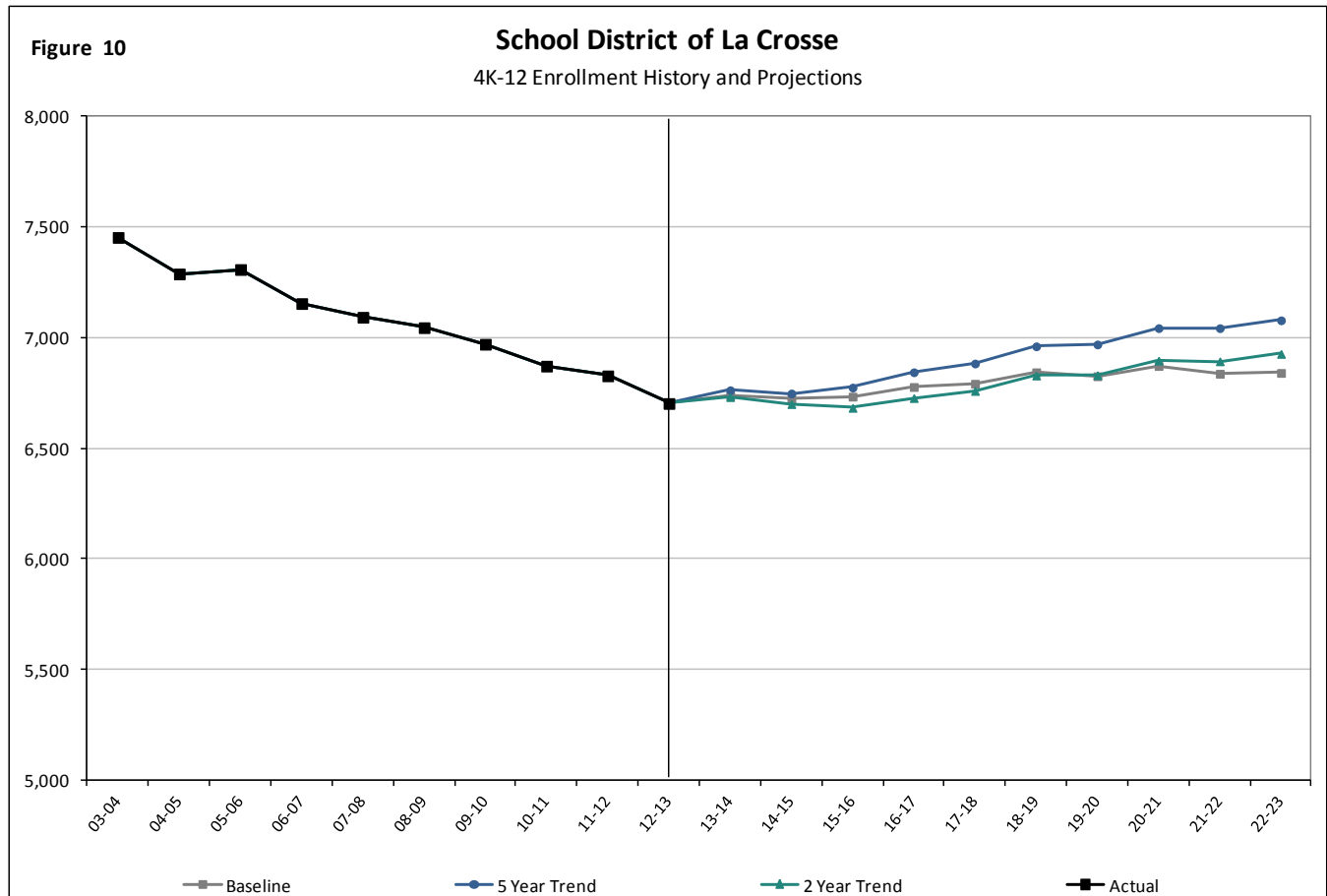


TABLE 21
Summary of 4K-12 Enrollment Projections
School District of La Crosse

| | 13-14 | 14-15 | 15-16 | 16-17 | 17-18 | 18-19 | 19-20 | 20-21 | 21-22 | 22-23 |
|----------------|-------|-------|-------|-------|-------|-------|-------|-------|-------|-------|
| Baseline | 6,738 | 6,724 | 6,734 | 6,778 | 6,792 | 6,844 | 6,826 | 6,873 | 6,838 | 6,841 |
| 5 Year Trend | 6,763 | 6,748 | 6,775 | 6,844 | 6,884 | 6,962 | 6,970 | 7,044 | 7,044 | 7,079 |
| 2 Year "Trend" | 6,732 | 6,700 | 6,683 | 6,728 | 6,760 | 6,829 | 6,831 | 6,897 | 6,894 | 6,927 |

All models project increasing 4K-12 enrollment. The Five Year Trend model indicates the greatest increase in enrollment while the Baseline model projects less of an increase in enrollment. 4K-12 enrollment projections five years from now (2017/18) forecast a range of enrollment from 6,760 to 6,884.



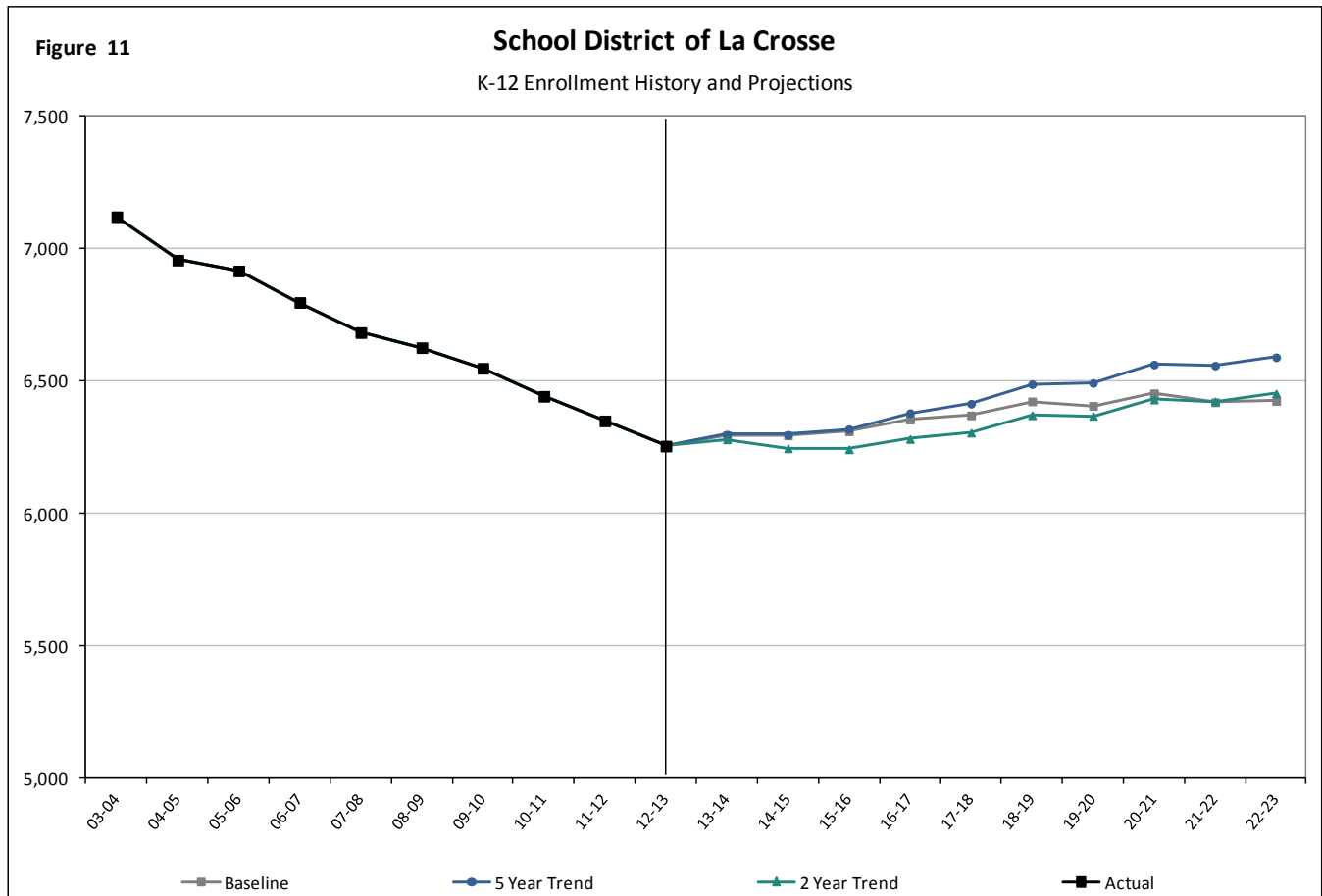


TABLE 22
Summary of K-12 Enrollment Projections
School District of La Crosse

| | 13-14 | 14-15 | 15-16 | 16-17 | 17-18 | 18-19 | 19-20 | 20-21 | 21-22 | 22-23 |
|----------------|-------|-------|-------|-------|-------|-------|-------|-------|-------|-------|
| Baseline | 6,296 | 6,295 | 6,311 | 6,355 | 6,371 | 6,424 | 6,407 | 6,455 | 6,421 | 6,425 |
| 5 Year Trend | 6,298 | 6,298 | 6,319 | 6,379 | 6,415 | 6,489 | 6,493 | 6,563 | 6,559 | 6,591 |
| 2 Year "Trend" | 6,280 | 6,246 | 6,243 | 6,282 | 6,305 | 6,371 | 6,369 | 6,431 | 6,424 | 6,454 |

K-12 enrollment projections have a somewhat similar pattern to the 4K-12 enrollment projections. K-12 enrollment projections five years from now (2017/18) forecast a range of enrollment from 6,305 to 6,415.



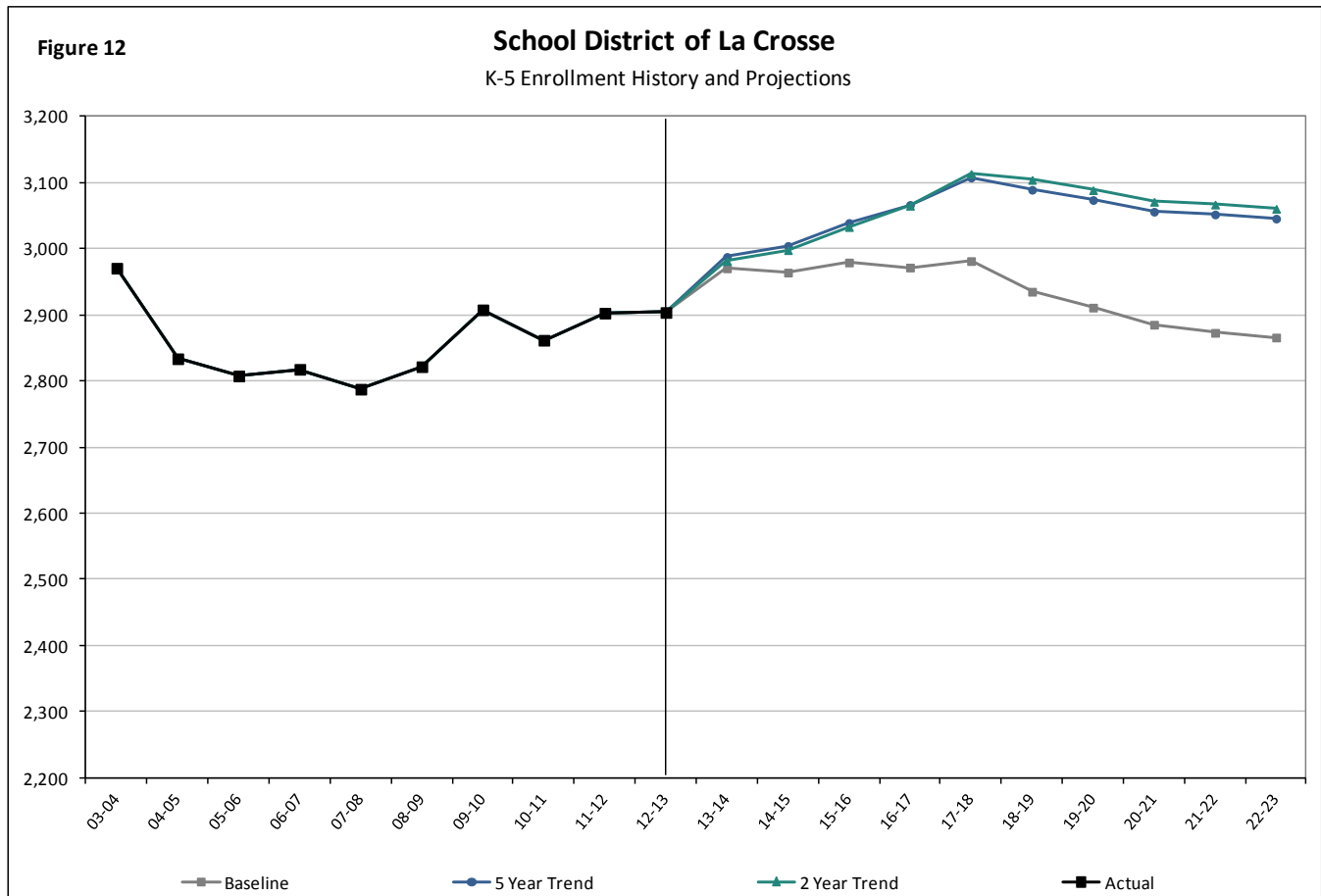


TABLE 23
Summary of K-5 Enrollment Projections
School District of La Crosse

| | 13-14 | 14-15 | 15-16 | 16-17 | 17-18 | 18-19 | 19-20 | 20-21 | 21-22 | 22-23 |
|----------------|-------|-------|-------|-------|-------|-------|-------|-------|-------|-------|
| Baseline | 2,971 | 2,964 | 2,980 | 2,972 | 2,982 | 2,935 | 2,911 | 2,886 | 2,873 | 2,866 |
| 5 Year Trend | 2,988 | 3,005 | 3,039 | 3,067 | 3,108 | 3,090 | 3,074 | 3,056 | 3,052 | 3,046 |
| 2 Year "Trend" | 2,982 | 2,998 | 3,033 | 3,065 | 3,114 | 3,104 | 3,089 | 3,071 | 3,067 | 3,061 |

All models project increasing K-5 enrollment for next year. The Five Year and Two Year trend models project increasing enrollment while the Baseline trend model projects steady enrollment during the next five years. The Baseline model projects enrollment returning to similar numbers as this year's enrollment in seven years, while the Five and Two Year models project greater enrollment totals in the long term. K-5 enrollment projections five years from now (2017/18) forecast a range of enrollment from 2,982 to 3,114.



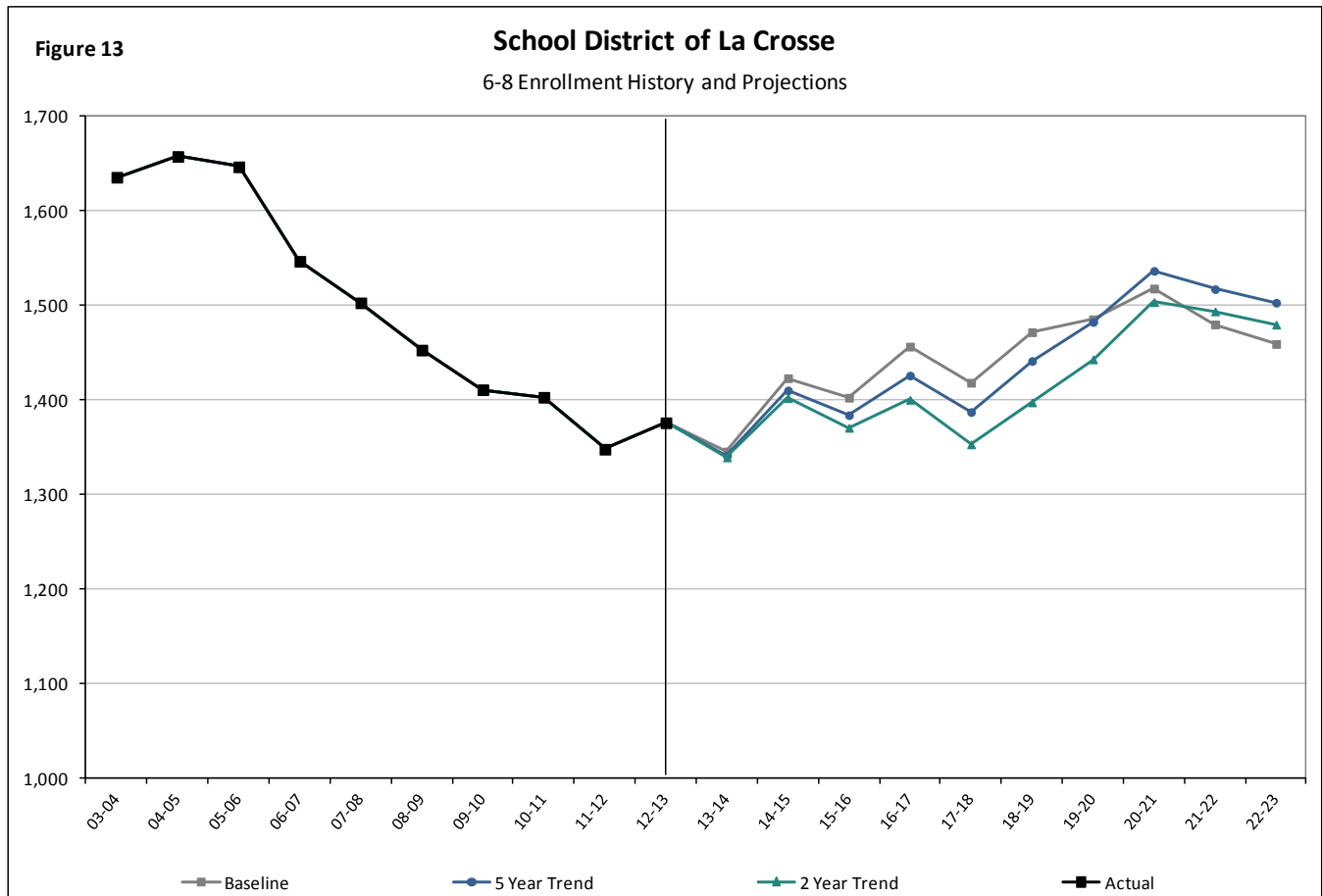


TABLE 24
Summary of 6-8 Enrollment Projections
School District of La Crosse

| | 13-14 | 14-15 | 15-16 | 16-17 | 17-18 | 18-19 | 19-20 | 20-21 | 21-22 | 22-23 |
|----------------|-------|-------|-------|-------|-------|-------|-------|-------|-------|-------|
| Baseline | 1,346 | 1,423 | 1,403 | 1,457 | 1,418 | 1,472 | 1,486 | 1,518 | 1,480 | 1,459 |
| 5 Year Trend | 1,341 | 1,410 | 1,384 | 1,426 | 1,387 | 1,441 | 1,483 | 1,537 | 1,517 | 1,503 |
| 2 Year "Trend" | 1,339 | 1,402 | 1,371 | 1,400 | 1,353 | 1,398 | 1,443 | 1,504 | 1,494 | 1,480 |

In middle school, the models project fluctuating enrollment, but an increase will likely occur returning to enrollment similar to the 2007/08 school year in ten years. 6-8 enrollment projections five years from now (2017/18) forecast a range of enrollment from 1,353 to 1,418.



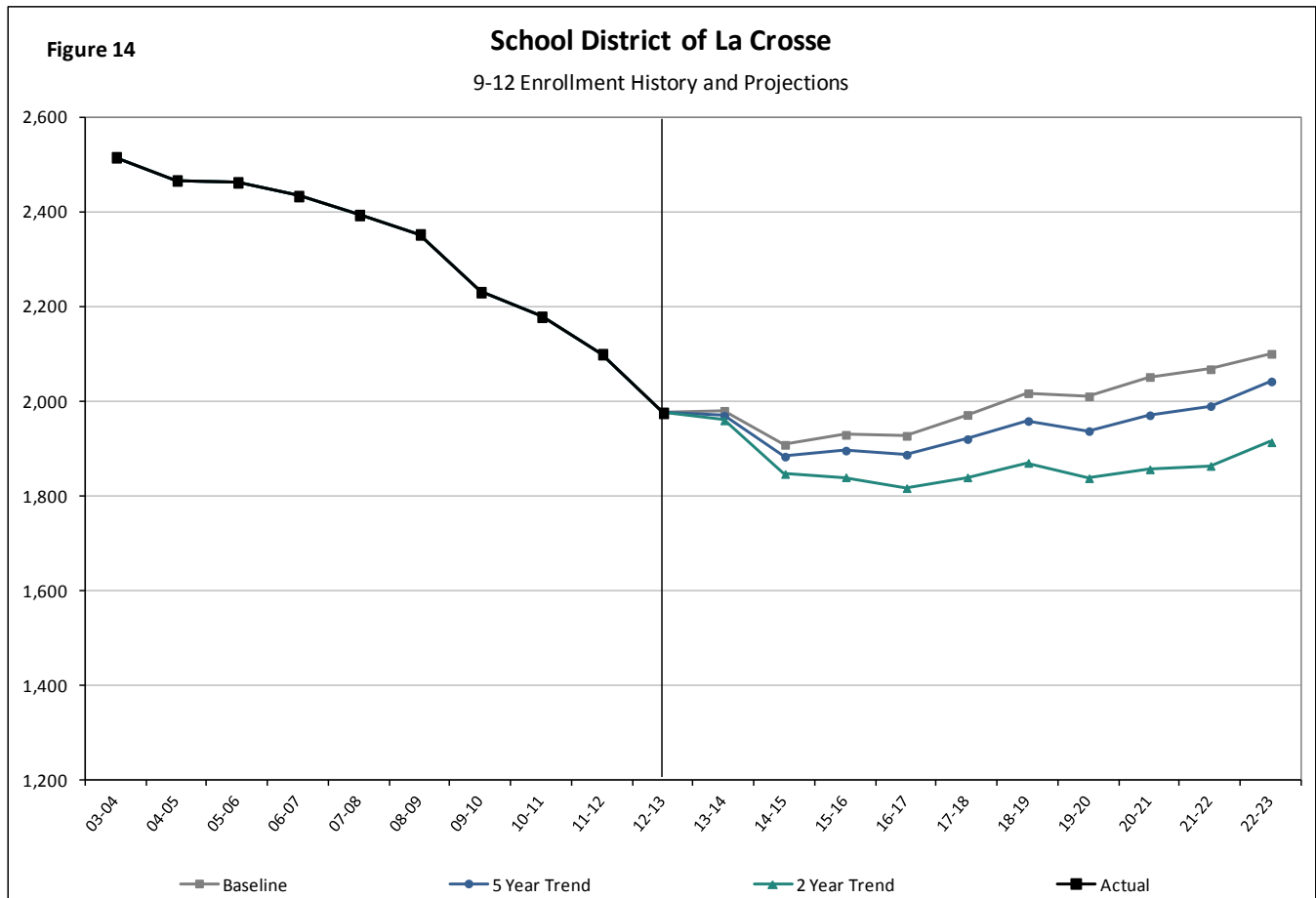


TABLE 25
Summary of 9-12 Enrollment Projections
School District of La Crosse

| | 13-14 | 14-15 | 15-16 | 16-17 | 17-18 | 18-19 | 19-20 | 20-21 | 21-22 | 22-23 |
|----------------|-------|-------|-------|-------|-------|-------|-------|-------|-------|-------|
| Baseline | 1,979 | 1,907 | 1,929 | 1,926 | 1,971 | 2,016 | 2,010 | 2,051 | 2,067 | 2,100 |
| 5 Year Trend | 1,969 | 1,883 | 1,895 | 1,887 | 1,920 | 1,958 | 1,937 | 1,970 | 1,989 | 2,041 |
| 2 Year "Trend" | 1,959 | 1,846 | 1,839 | 1,816 | 1,839 | 1,869 | 1,837 | 1,856 | 1,863 | 1,913 |

At the high school, all models forecast similar enrollment next year followed by a declining enrollment three years from now. After enrollment decline, the general trend will be growth in the high school grades. 9-12 enrollment projections five years from now (2017/18) project a range of enrollment from 1,839 to 1,971.



Conclusions

These district-level enrollment projections are based on models that incorporate recent past and current demographic information as well as the district's own enrollment data and assumptions about future housing development in the school district area. Because most of the students in the district's schools over the next few years have already been born or are already in school, and because their grade progression from one year to another is highly predictable, the total district-level projections should be viewed as having high accuracy over the next few years. After a few years, and increasingly for the lower elementary grades, actual enrollment figures will likely deviate from these projections by ever increasing amounts. The reason for this is that birth trends, in-migration of pre-school age children, and transfers into the district are more difficult to predict and therefore this makes meaningful incorporation into enrollment projections a challenge. As with nearly all types of forecasts, accuracy in these enrollment projections decreases over time.

Overall, the information provided in this school enrollment projection report points to enrollment increases largely due to students already in the school system advancing to the higher grades. Birth trends indicate births will slightly decrease over time, while kindergarten enrollment shows growth. Although steady housing and general population trends may not indicate growth, it appears that the school age population will rebound in the coming years. The Five Year Trend model projects higher enrollment than the other models, because of the higher grade progression ratios of the last five years. If these higher levels of in-migration and transfers into the district that have occurred in the past five years continue into the future, then this model would be a good predictor of future enrollment. The district is likely to see increasing enrollment in the grades K-5. Grades 6-8 will experience fluctuating enrollment with a general trend towards growth. After a few years of decline, grades 9-12 will experience increasing enrollment in the long term.

Because the projections found in this report incorporate the consequences of migration to and from the district, any significant and sustained interruption of current or recent past migration patterns will erode these models' accuracy from the initiation point of the new pattern. The various projection models provide a realistic range of migration and transfer effects on the school district. Enrollment growth should be closely monitored for the next few years, and compared with these projections, to determine the trajectory of future growth. This type of monitoring program might help the district to determine which of the models seems to be the most realistic to use for planning purposes.



Appendix A

